

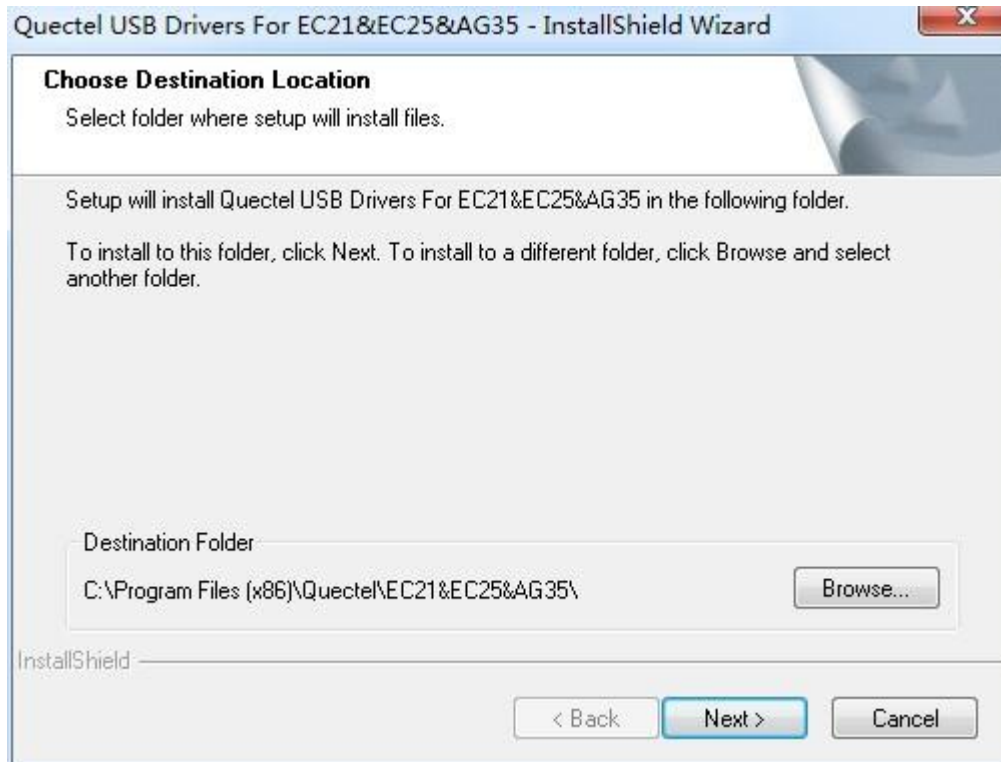
# EC20/EC25 Connect to Internet Simple Operation Manual

**Make sure the switch is in the position of "USB"**



## Install 4G module driver

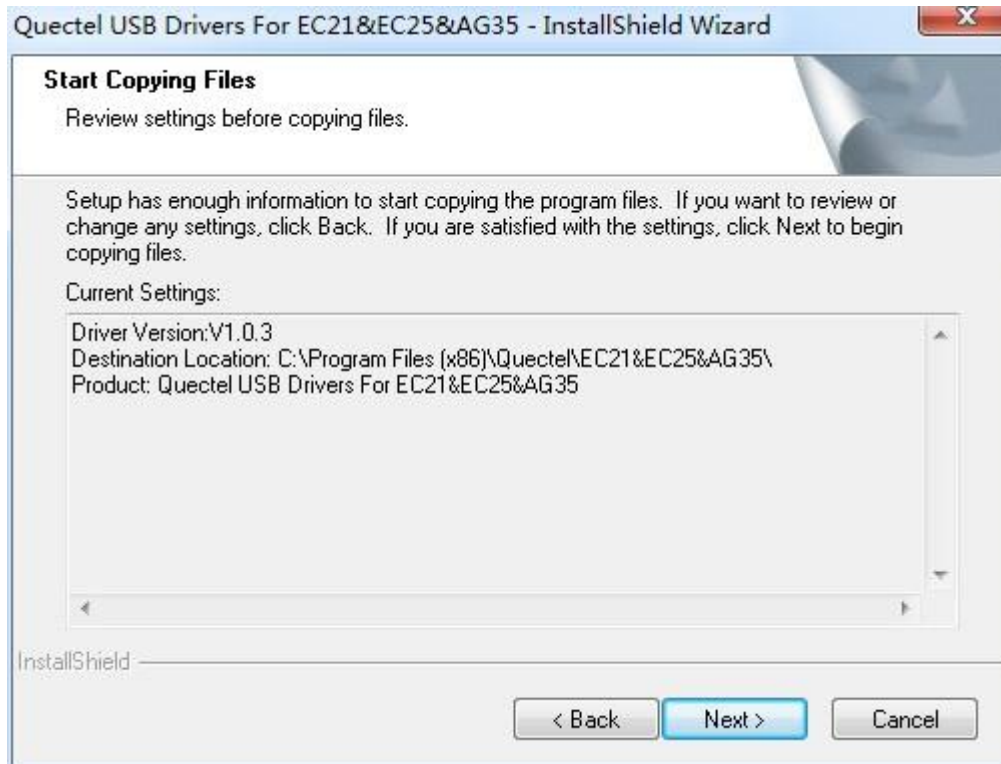
1. Before installing the 4G module driver, please confirm that the 4G module has been inserted on the PC USB, and the antenna and SIM card have been inserted.
2. Download the driver, and click the "setup.exe" file to install the driver.
3. After clicking the setup.exe file, the driver installation window will pop up, as shown in image1:



(image1)

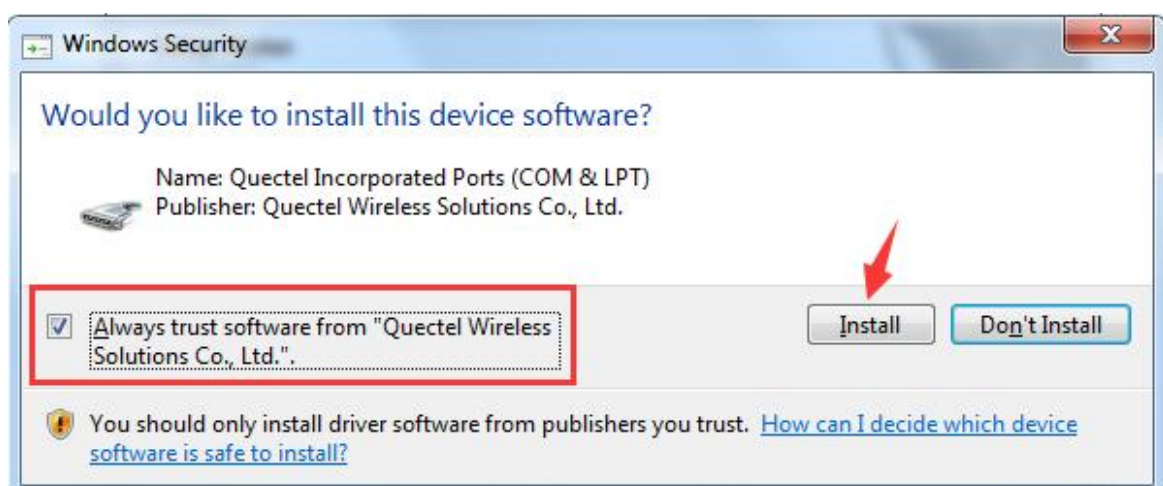
Do not change the installation path and click "Next" to install.

4. After the Image2 window appears, continue to click "Next" to install



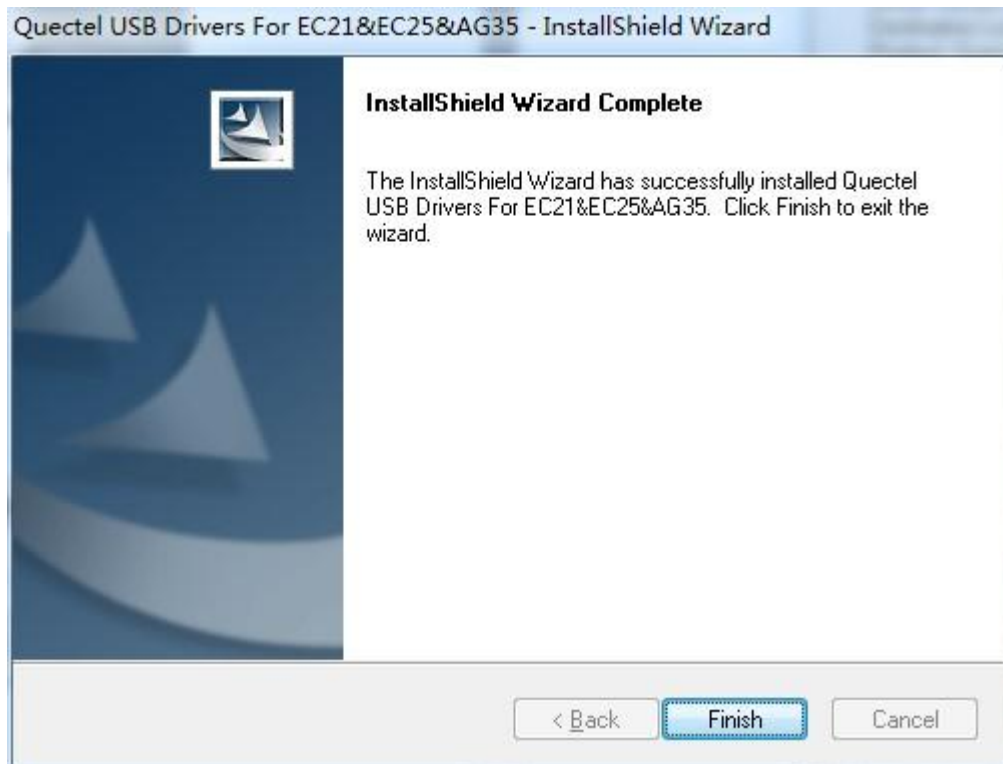
(image2)

When the window as shown in image3 appears, make sure to check the options in the red box, that is, to choose to always trust, otherwise it will cause the driver installation to fail.



(image3)

5. When the window shows the image of image4, it means that the driver has been installed. Click the "Finish" button to exit the installation 4G module driver installation interface

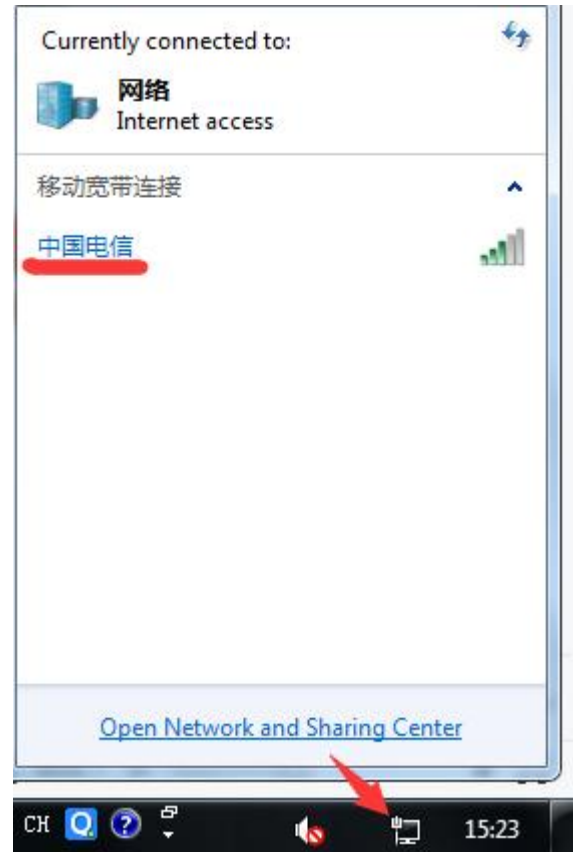


(image4)

## Virtual network card dial -up online

In the Windows operating system, there are two commonly used dial -up methods, one is the virtual network card dial -up online, and the other is to use the dial -up software that comes with Windows to create a MODEM dial -up connection. Briefly introduce the use of virtual network card dial -up Internet access

1. Move the mouse to the network connection icon display area in the lower right corner of the Windows taskbar. Click the network connection icon to appear the window as shown in Image5



(image5)

2. Move the mouse to the "中国电信" (SIM card operator) that appeared in image6, and click "Connect".



(image6)

3. For the first time to using, the window as shown in image7 may appear (Most operators' SIM cards already have the default data, and will not jump out of this window)

APN:	<input type="text"/>
User name:	<input type="text"/>
Password:	<input type="text" value="[Type here to set new password]"/>

(image7)

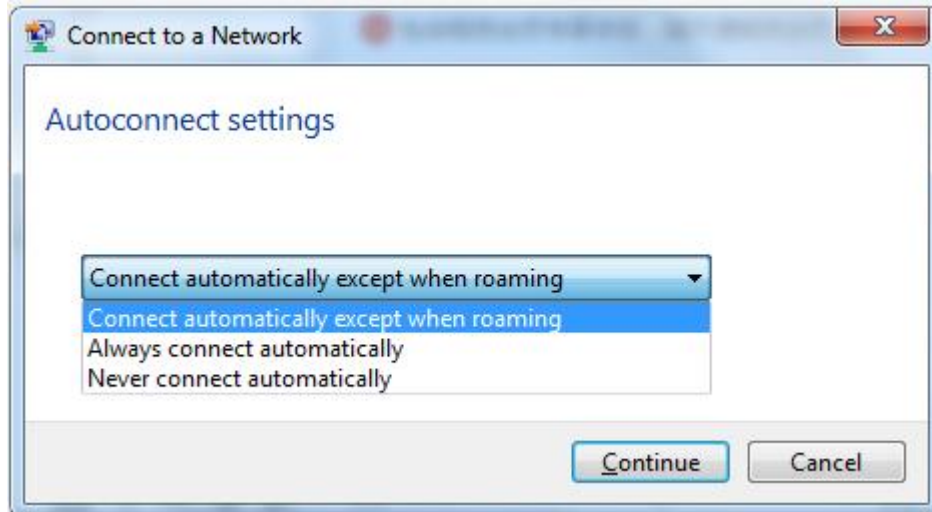
If this window appears, enter the corresponding dial -up parameters of the SIM card operator, as shown in Image8

APN:	<input type="text" value="cnnet"/>
User name:	<input type="text" value="card"/>
Password:	<input type="password" value="••••"/>

(image8)

As shown in Image8, after entering the parameters, click "Continue" to perform the next step

4. At this time, a window of "Automatic Connection Settings" will pop up, as shown in image9, please select the corresponding options according to actual needs, and then click "Continue" to complete all operations of the virtual network card dial-up online access to the Internet.



(image9)

**Note: Because some data cards are divided into different fees from roaming and non-roaming, it is recommended to choose "Connect automatically except when roaming"**