

SMS Deliverer 安装和使用手册

SMS Deliverer Install and use manual

1. 安装

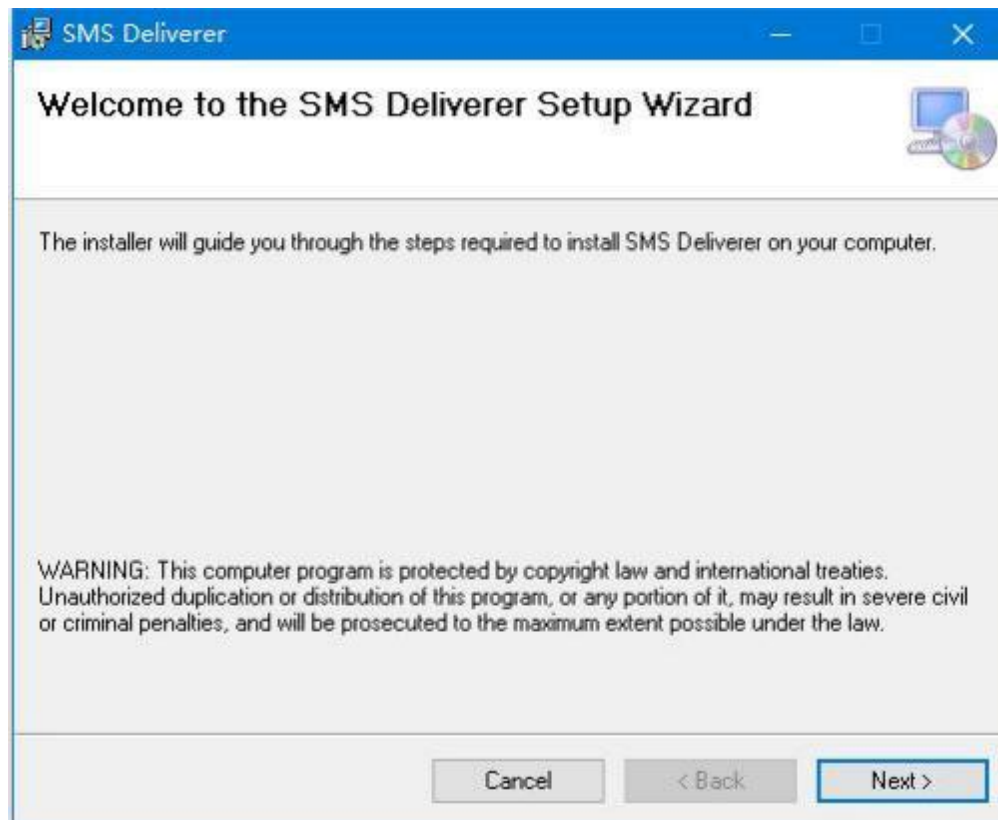
点击 [SMS Deliverer](#) 下载安装文件，解压缩之后双击“SMSDeliverER2.04.msi”进行安装。如果你的电脑没有安装解压缩的程序，请先下载[winrar](#)并安装。

1. Install

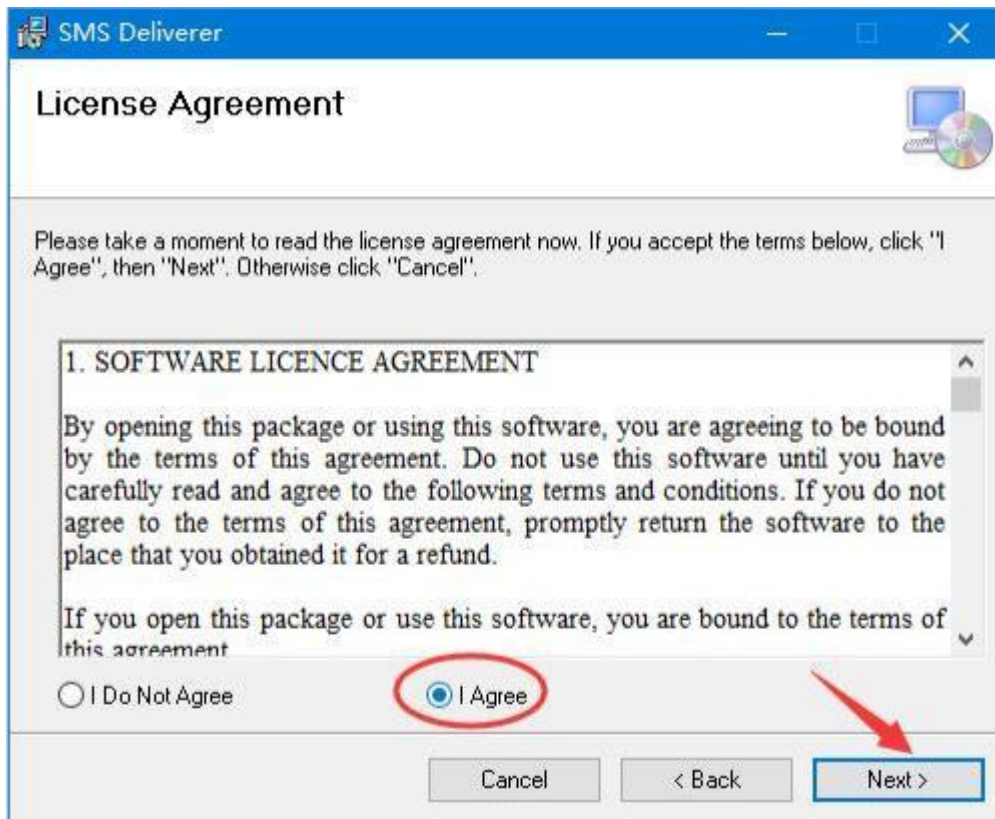
Click on [SMS Deliverer](#) to download the installation file, extract it, and then double-click on "SMSDeliverER2.04. msi" to install it. If your computer does not have compressed program installed, please download [winrar](#) and install it first.



点击“Next” Click “Next”

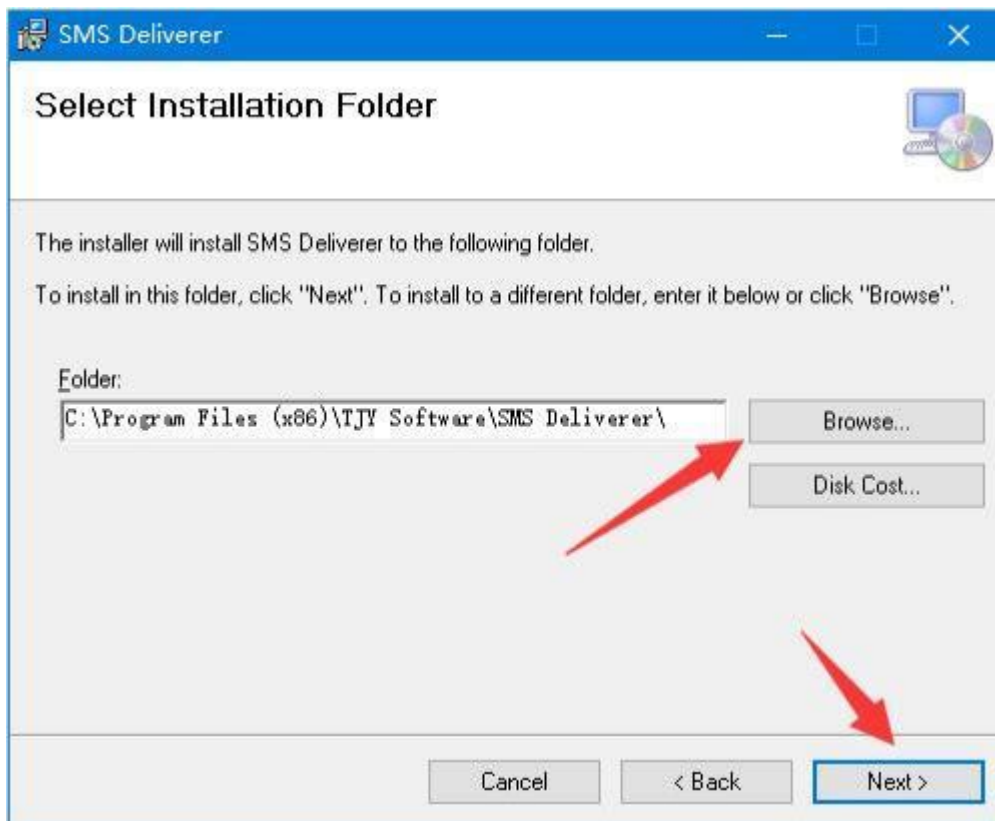


选中“I Agree”，点击“Next” Select “I Agree” and click “Next”



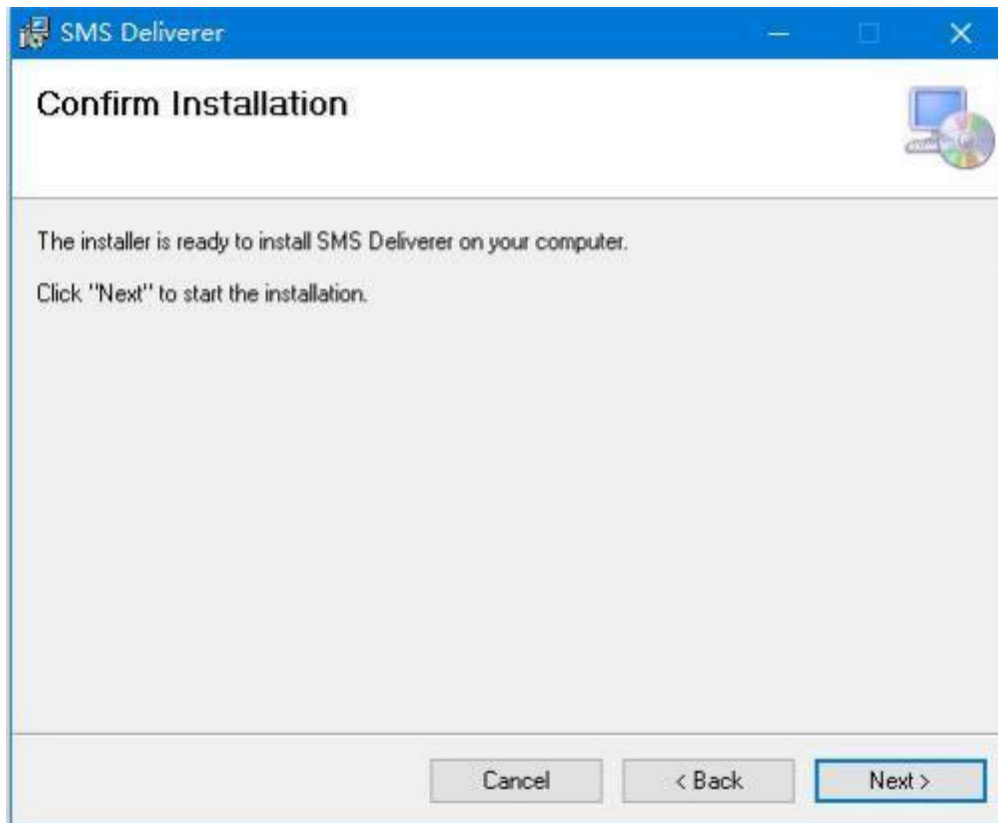
使用默认的安装路径或者点击“Browse”进行选择需要安装目录，然后点击“Next”

Use the default installation path or click “Browse” to select the desired installation directory, and then click “Next”



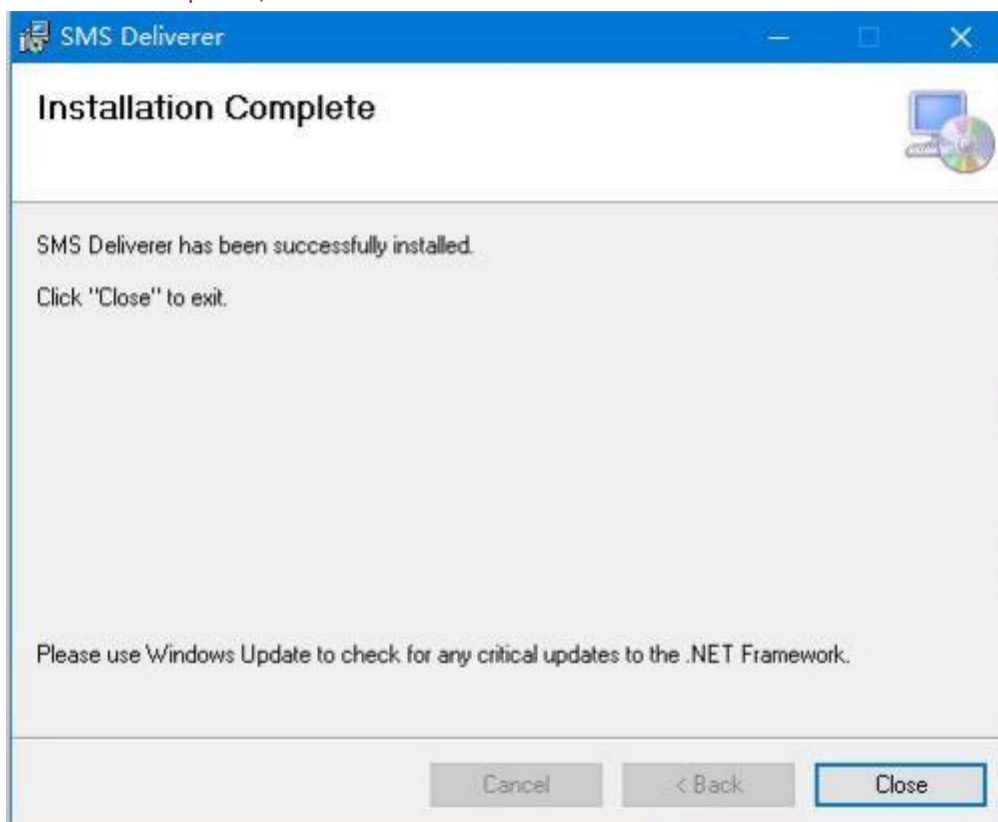
点击“Next”

Click “Next”



安装完成，点击“Close”关闭安装窗口

Installation completed, click "Close" to close the installation window

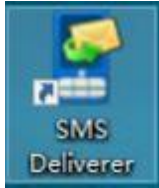


2. 软件注册

2 Register software

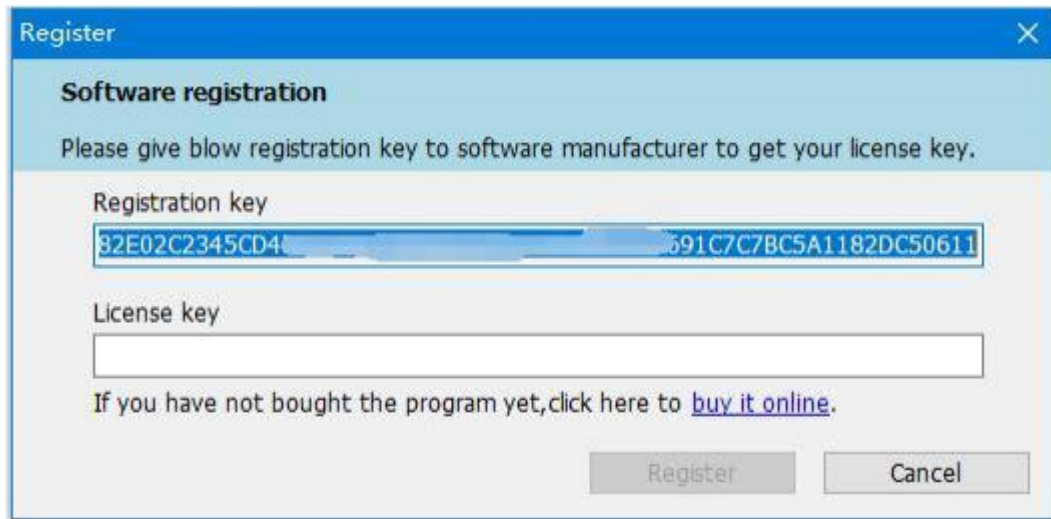
双击桌面的“SMS Deliverer”

Double click on the “SMS Deliverer” on the desktop



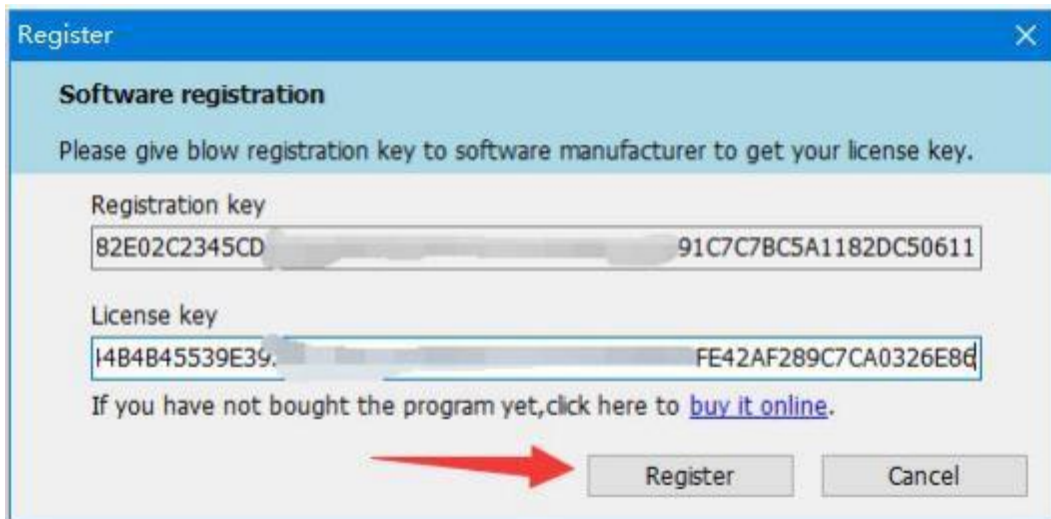
如果是第一次使用 SMS Deliverer，将会弹出如下窗口，提示软件需要注册，请复制“Registration key”框内的内容发送给我们，我们会生成一个“License key”给你

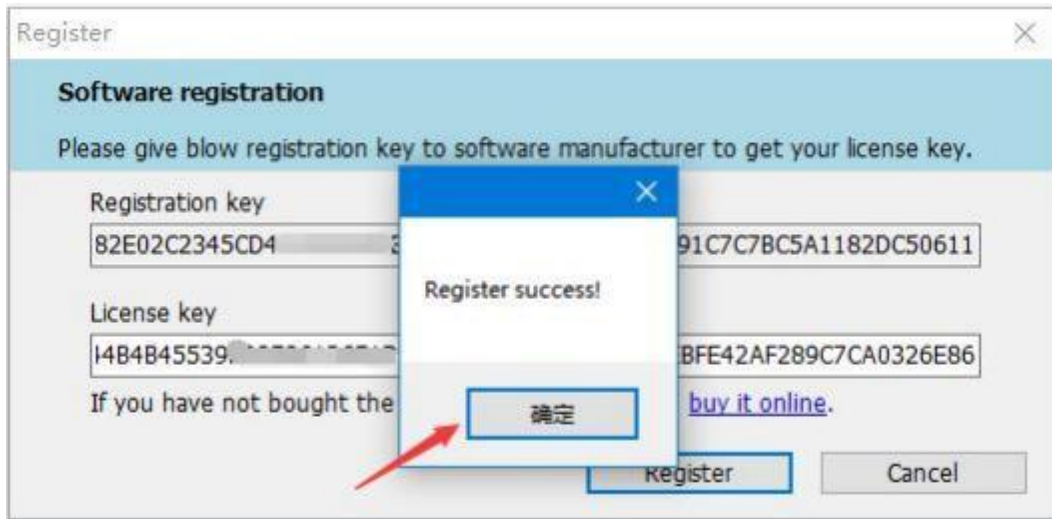
If this is the first time using SMS Deliverer, the following window will pop up, indicating that the software needs to be registered. Please copy the content in the "Registration key" box and send it to us. We will generate a "License key" for you

A dialog box titled 'Register' with a blue header. It contains the text 'Software registration' and 'Please give blow registration key to software manufacturer to get your license key.' Below this are two text input fields. The first field, labeled 'Registration key', contains the text '82E02C2345CD41' followed by a greyed-out area and '91C7C7BC5A1182DC50611'. The second field, labeled 'License key', is empty. At the bottom, there is a link 'buy it online.' and two buttons: 'Register' and 'Cancel'.

把我们提供给你的 License key 粘贴到对应的框内，点击“Register”，软件注册成功

Paste the obtained License key into the corresponding box, click "Register", than the software registration is successful

The same 'Register' dialog box as above, but now the 'License key' field contains the text '14B4B45539E39.' followed by a greyed-out area and 'FE42AF289C7CA0326E86'. A red arrow points to the 'Register' button.

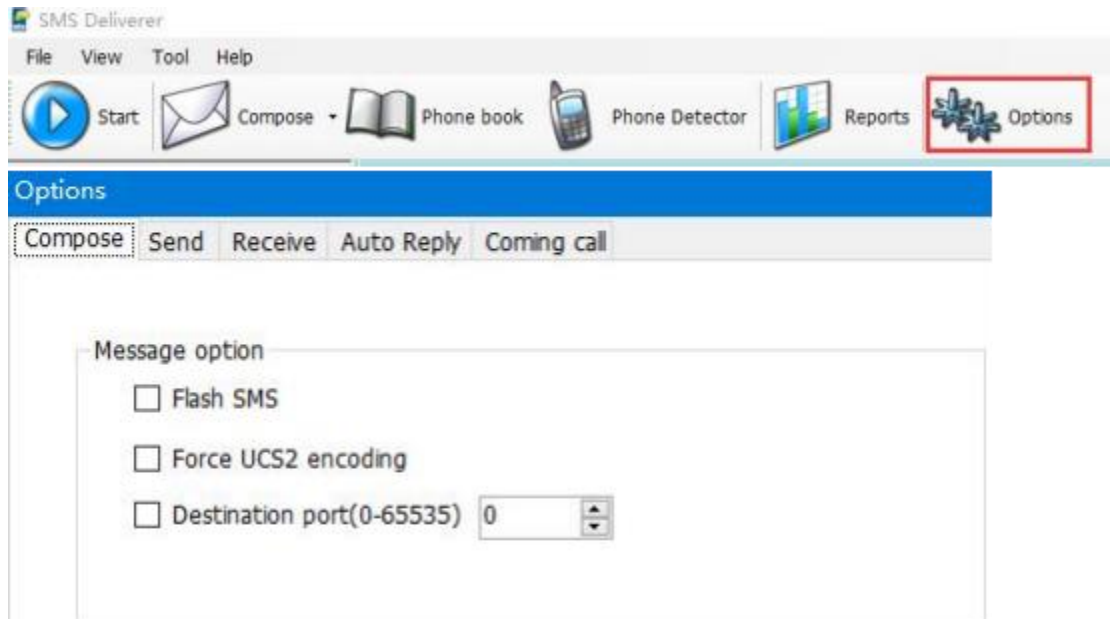


3. 使用方法

3 How to use

你可以使用软件的默认配置，也可以自定义你自己想要的参数，点击“Options”，根据个人习惯和需要的功能、参数等的进行设置

You can use the default configuration of the software or customize the parameters you want. Click on "Options" and set them according to your personal habits and desired functions, parameters, etc



Compose **Send** Receive Auto Reply Coming call

Message center address(SMSC)

Use default SMSC stored in SIM card

Custom:

Send option

Enable batch mode to send fast

Discontinuous sending

Pause seconds for very SMS sent

Unsent

Retry times

Move unsent SMS to sent box after retry

Compose Send **Receive** Auto Reply Coming call

General

Delete received message from phone

Play sound when message received

Sound file ...

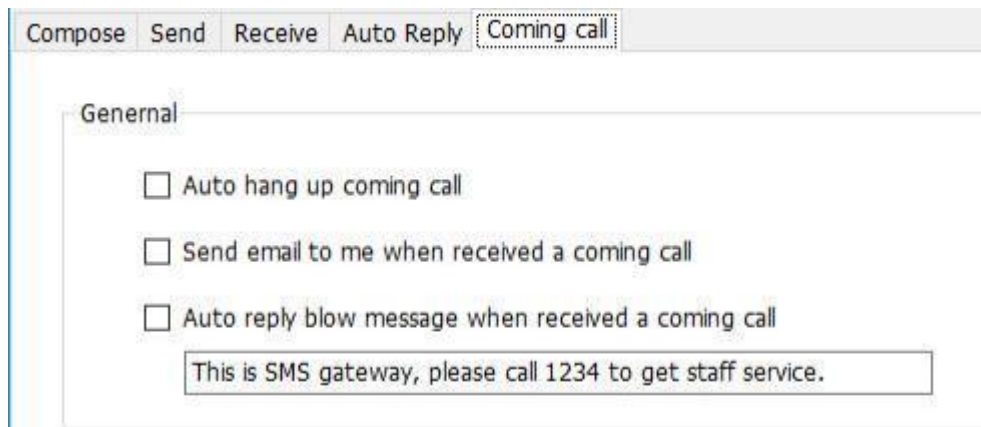
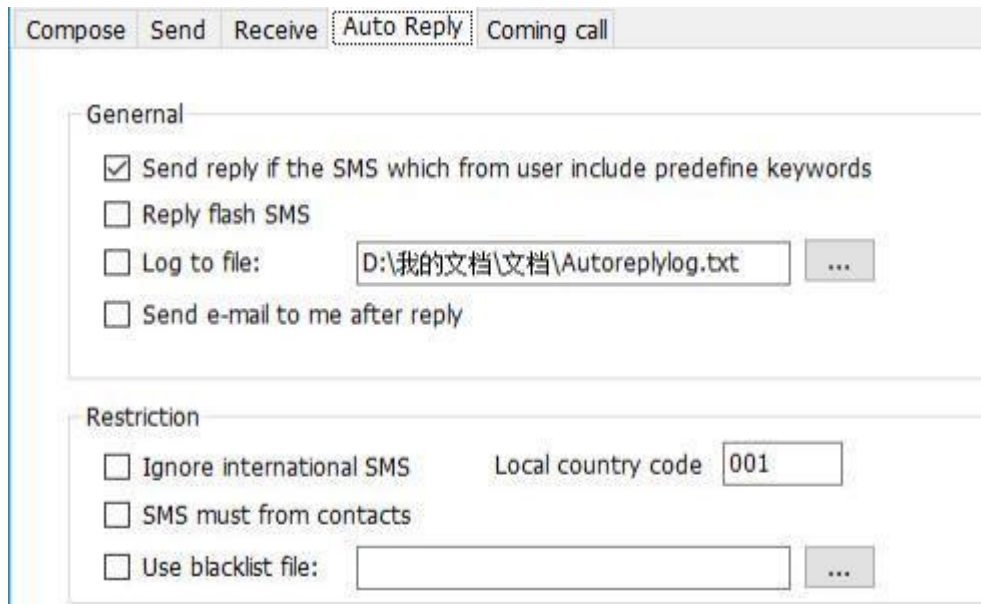
Send e-mail to me when received message from specified contacts

Export

Export message when received message

File name ...

Save different file for each day Always save same file



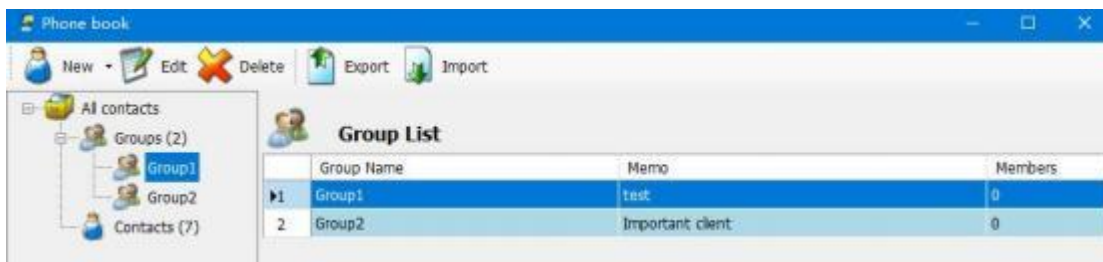
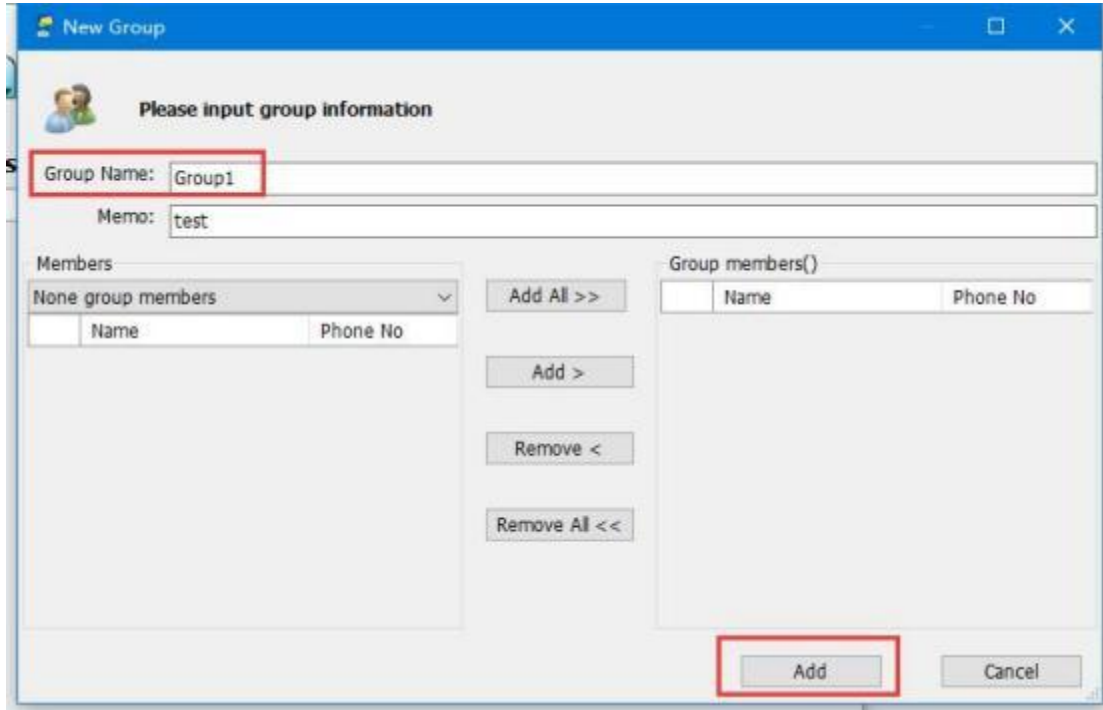
电话本创建分组，点击“Phone book”，右键点击“Groups”选择“New”

Create group in the phone book, click on “Phone book”, right-click on “Groups”, and select “New”



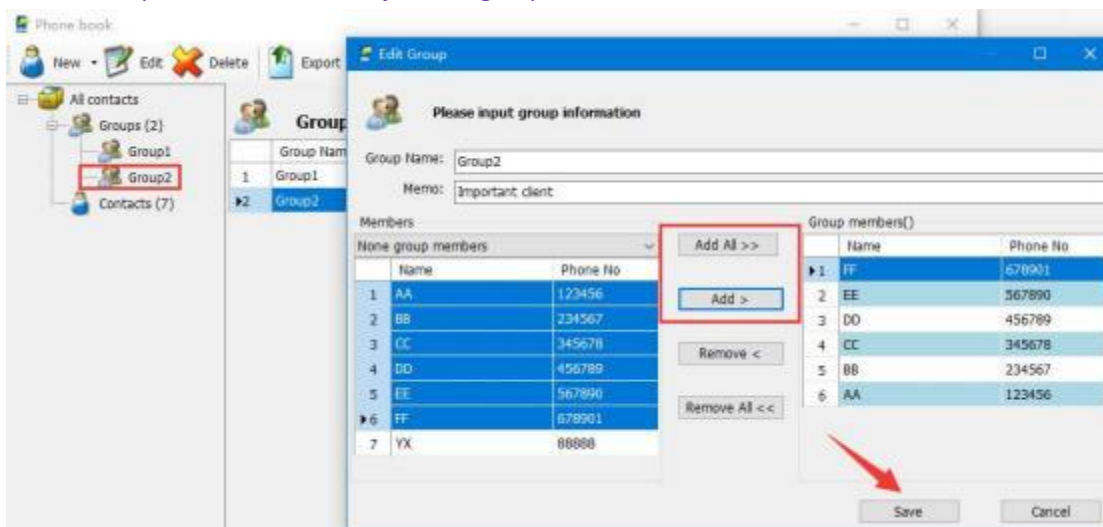
输入自己定义组的名字和备注，点击“Add”进行创建

Enter the Group Name and Memo of the self-defined group, click "Add" to create



把电话本里面的联系人进行分组。双击需要操作的组，选择需要加入这个组的联系人，点击“Add”，然后点击“Save”

Group the contacts in the phone book. Double click on the group you want to operate on, select the contact person who needs to join this group, click "Add", and then click "Save"

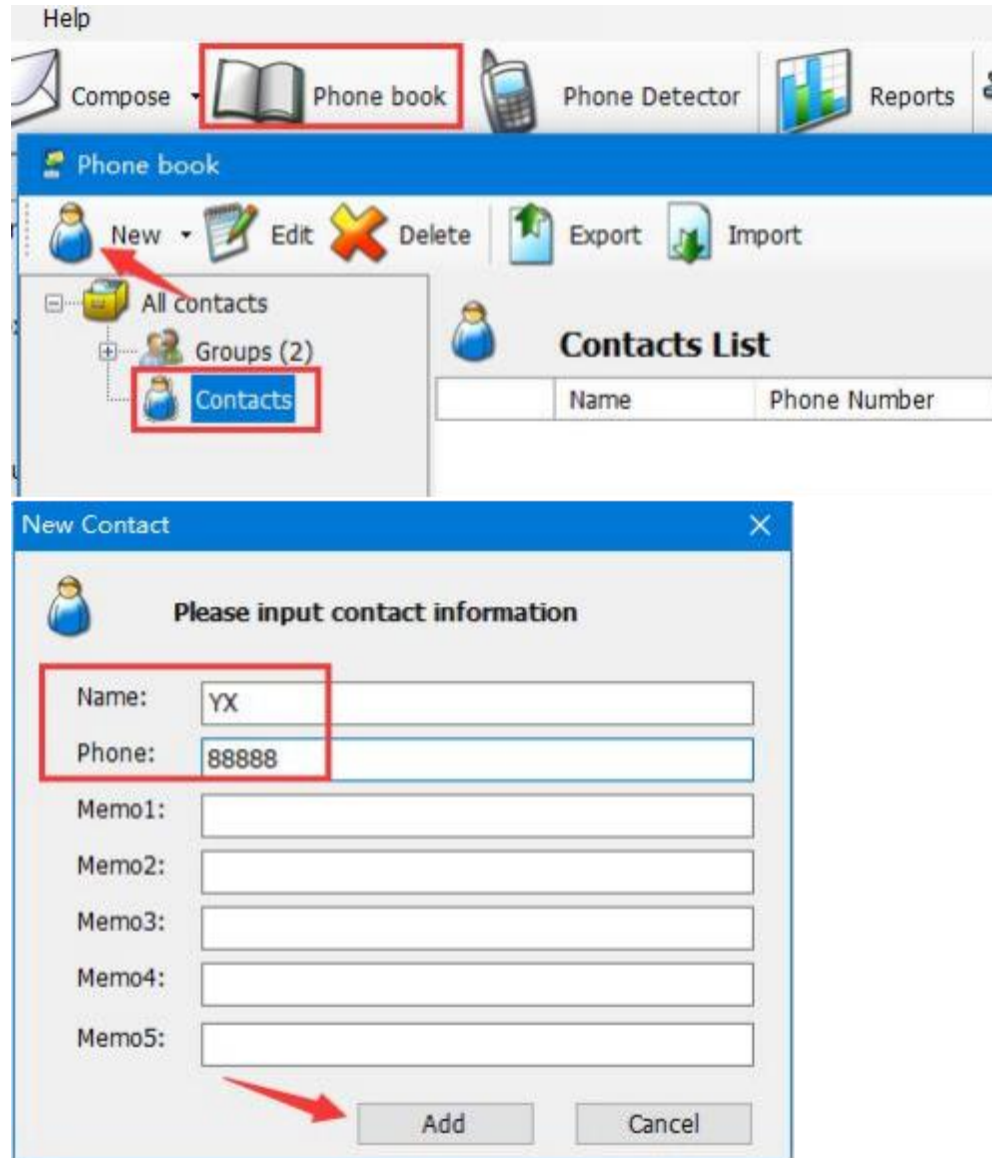



电话本添加联系人和电话号码，手动添加如下：


Add contacts and phone numbers to the phone book, manually adding the following:

点击“Phone book”，点击“New”的按钮，填写联系人的名字和电话号码，Memo1-Memo5 根据实际需要填写，也可以不填写，点击“Add”

Click on “Phone book”, click on the “New”, fill in the contact person's name and phone number. Memo1-Memo5 can be filled in according to actual needs, or it can be left blank, click on “Add”

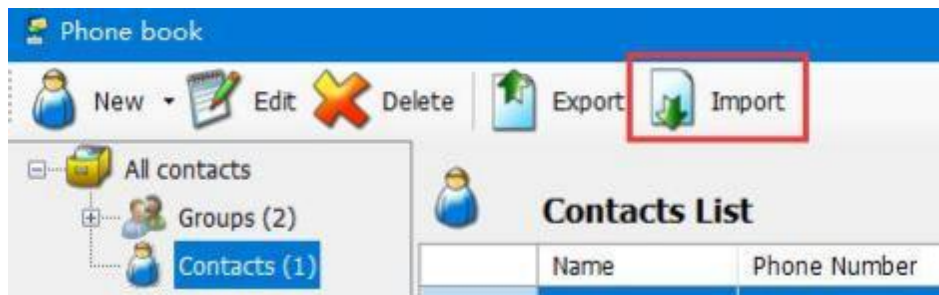


批量导入电话本，创建一个 CSV 的文件，或者点击“Export”  导出模板，格式如下

Batch import the phone book, create a CSV file, or click "Export"  to export the template in the following format

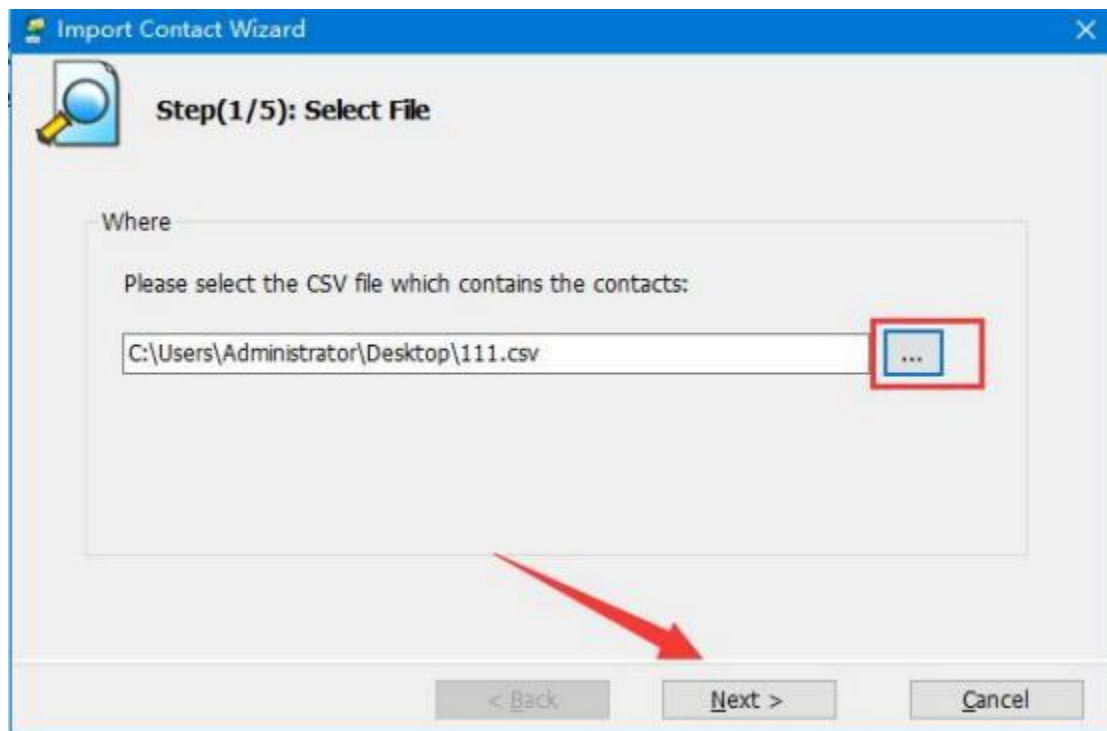
| | A | B | C | D | E | F | G |
|---|------|--------|-------|-------|-------|-------|-------|
| 1 | Name | Phone | Memo1 | Memo2 | Memo3 | Memo4 | Memo5 |
| 2 | AA | 123456 | | | | | |
| 3 | BB | 234567 | | | | | |
| 4 | CC | 345678 | | | | | |
| 5 | DD | 456789 | | | | | |
| 6 | EE | 567890 | | | | | |
| 7 | FF | 678901 | | | | | |
| 8 | | | | | | | |

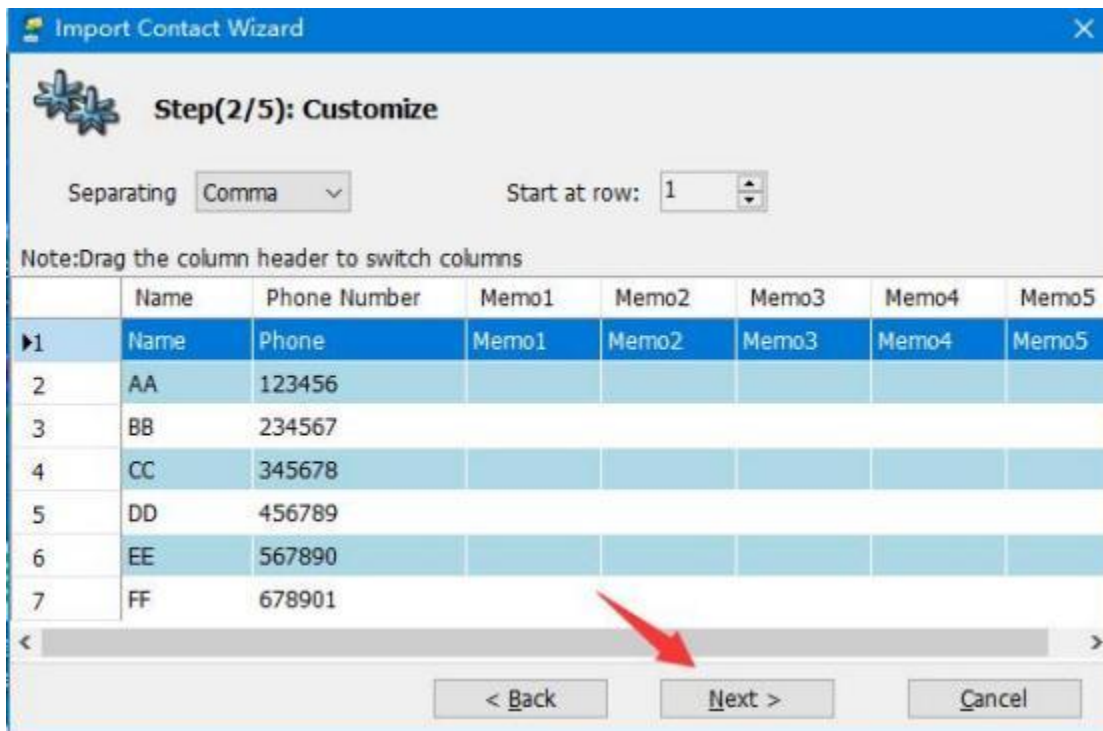
点击 “Import” Click on the "Import"



选择你要导入的 csv 文件，然后点击 “Next”

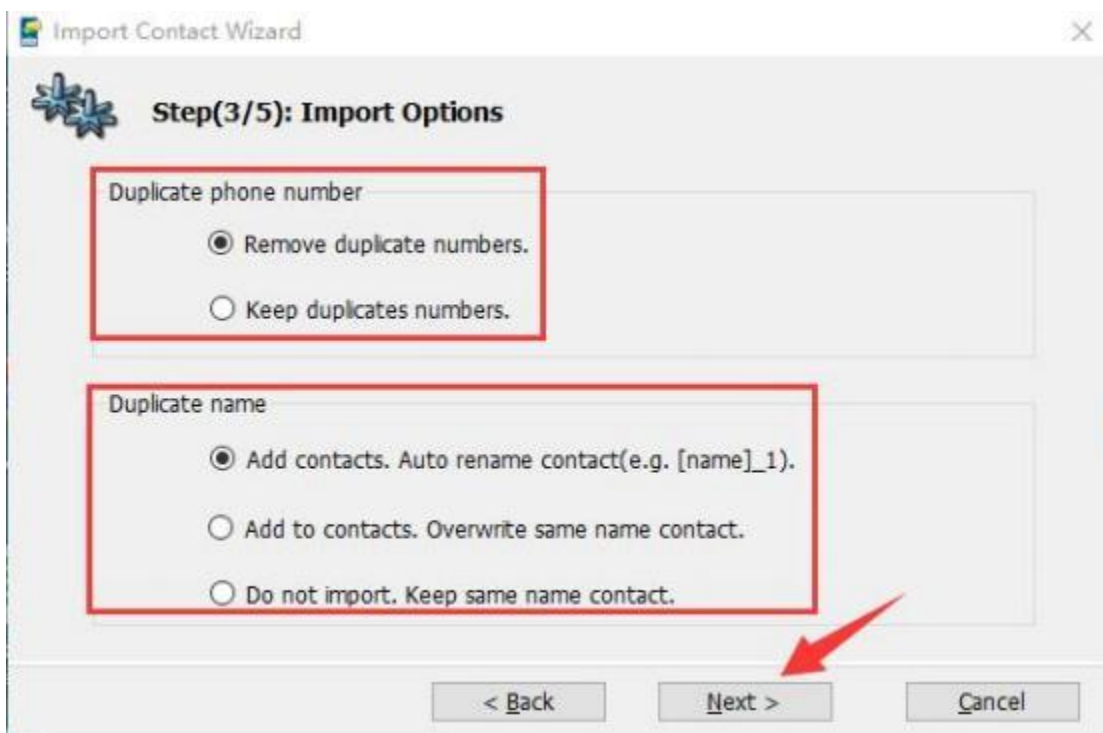
Select the CSV file to import and click "Next"





对有相同/重复的号码或者名字的如何处理进行选择，然后点击“Next”

Choose how to handle those with the duplicate number or name, and then click "Next"



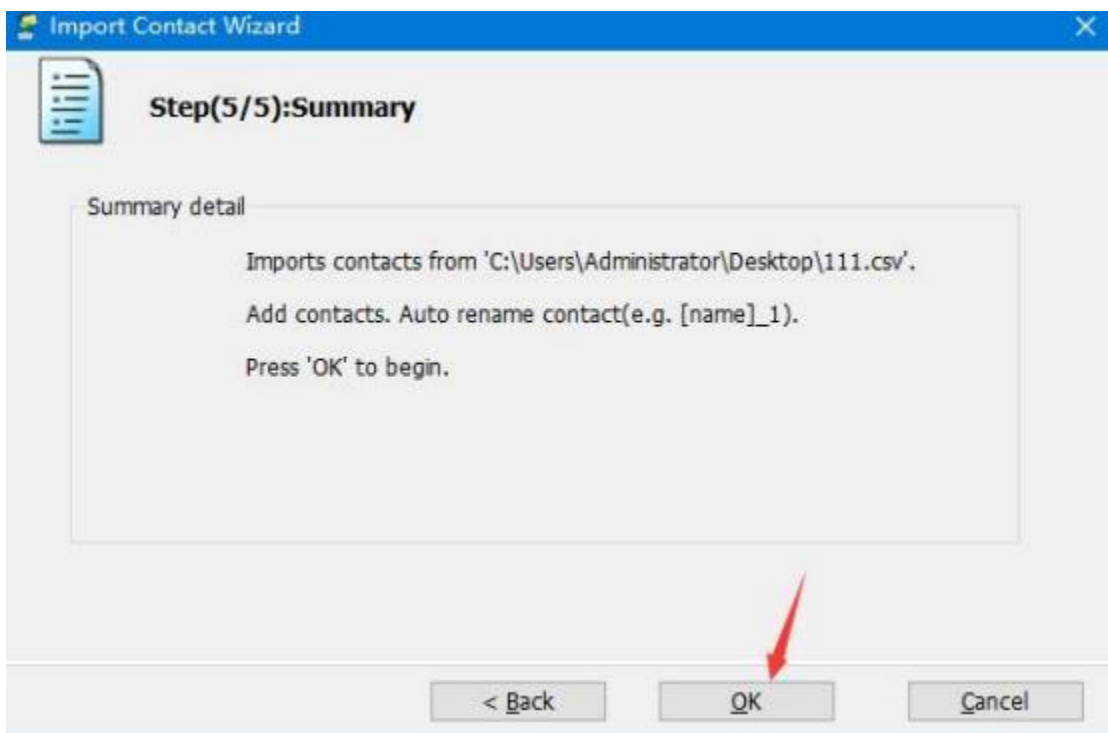
选择导入的联系人是否加入到“组”，然后点击“Next”

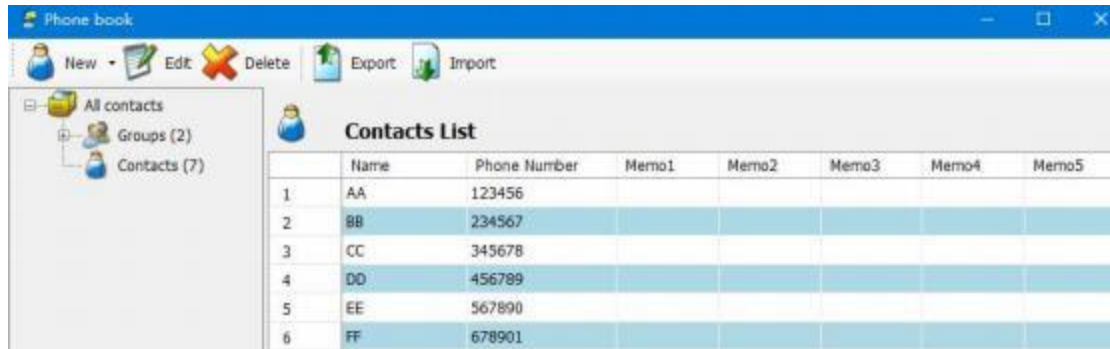
Select whether the imported contacts will be added to the “group”, and then click “Next”



点击“ok”完成电话本的导入

Click "OK" to complete the import of the phone book



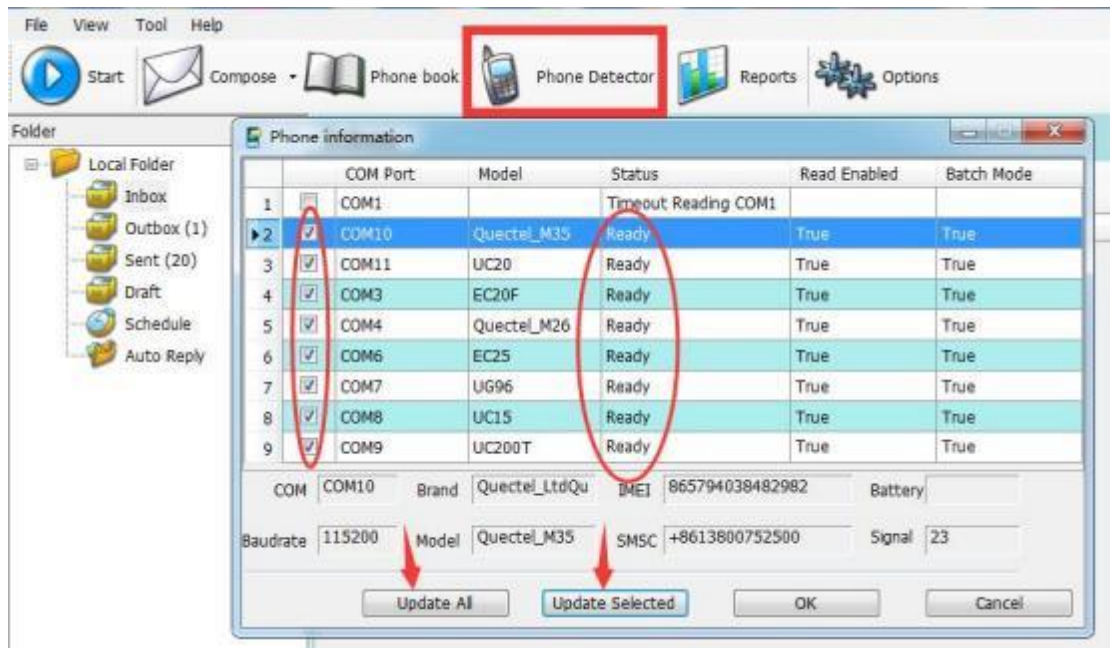


检测和选择可以使用的端口

Detect and select available COM ports

点击“Phone Detector”，点击“Update All”，会列出这台电脑上所有的 COM 端口，在“Status”栏会显示端口的状态，如果显示“Ready”表示这个端口是正常可以使用的，如果显示“Timeout Reading”“ERROR”或者其他，则表示这个端口不能使用，可能不是 MODEM Ports，也可能是没有正确插入 SIM 卡或者 SIM 卡不可用；选择好状态为“Ready”的端口后，可以点击“Update Selected”可以更新这些端口的状态。确定选择的端口正常以后，点击“OK”

Click on "Phone Detector" and "Update All" to list all COM ports on this computer. The status of the ports will be displayed in the "Status" column. If "Ready" is displayed, it indicates that the port is functioning normally. If "Timeout Reading", "ERROR" or other displays, it indicates that the port cannot be used. It may not be a MODEM port, or the SIM card may not be properly inserted or unavailable; After selecting the ports with a status of "Ready", you can click "Update Selected" to update the status of these ports. After confirming that the selected port is normal, click "OK"



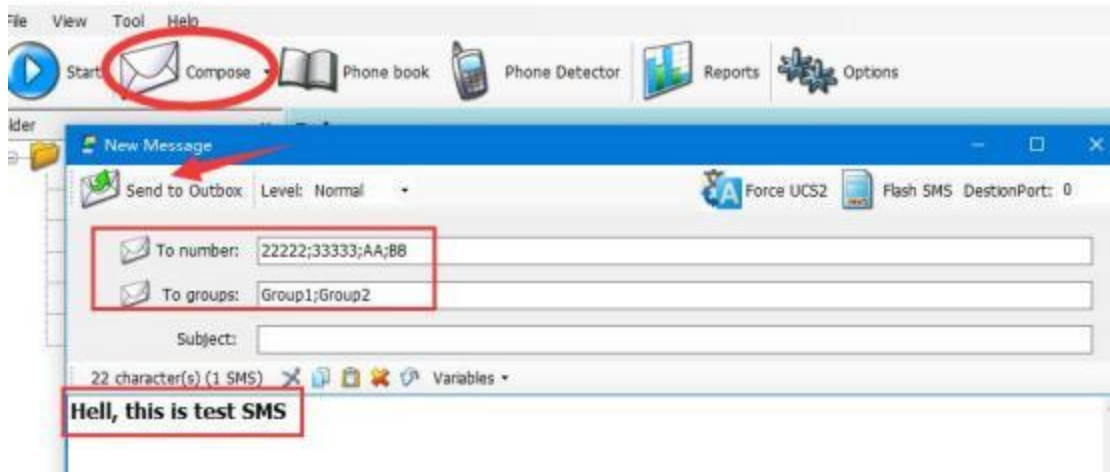
发送短信

Send SMS

点击“Compose”。“To number”这栏填写需要发送的电话号码或者电话本里面的联系人名字，如果多个，使用“；”分隔；“To groups”这栏可以选择电话本里面的组，如果多个组，

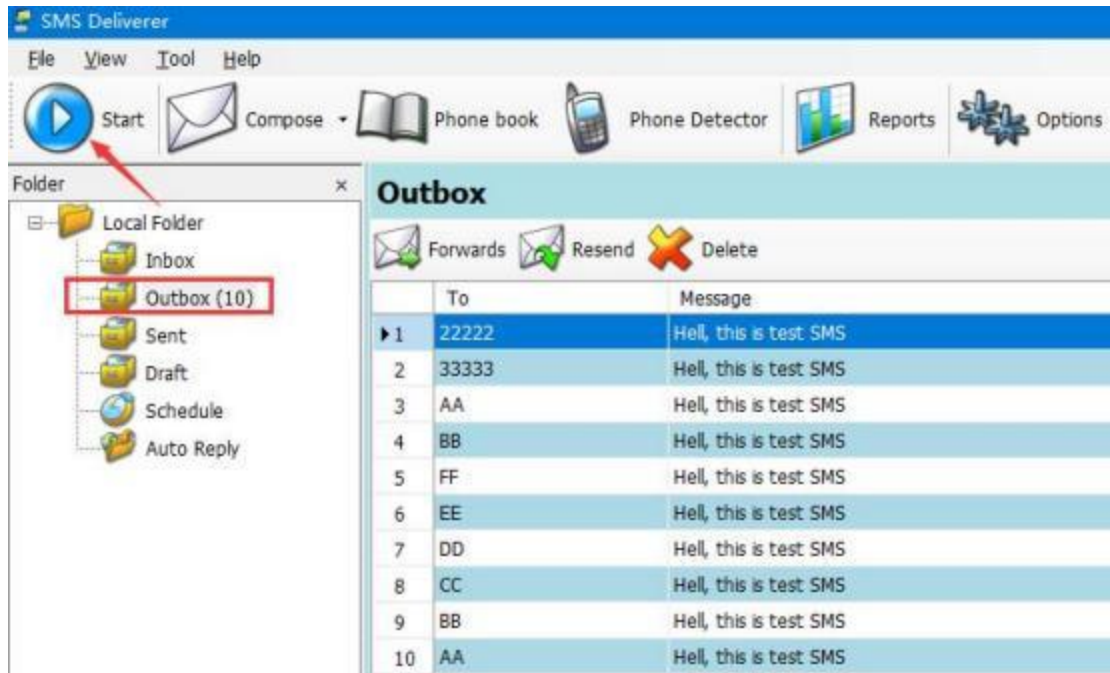
用“;”分隔; “Subject”这栏可以写入本次发送的 SMS 主题, 也可以留空。在内容栏输入需要发送 SMS 的内容, 然后点击“Send to Outbox”

Click on “Compose”. Fill in the "To number" column with the phone number or contact name in the phone book where SMS needs to be sent. If there are multiple contacts, separate them with ";"; In the "To groups" column, you can select the groups in the phone book. If there are multiple groups, separate them with ";"; The “Subject” column can be written as the subject sent this time or left blank. Enter the content you want to send SMS to in the content bar, and then click "Send to Outbox"



选中“Outbox”, 点击“Start”就可以开始发送短信

Click on "Outbox" and "Start" to start sending SMS

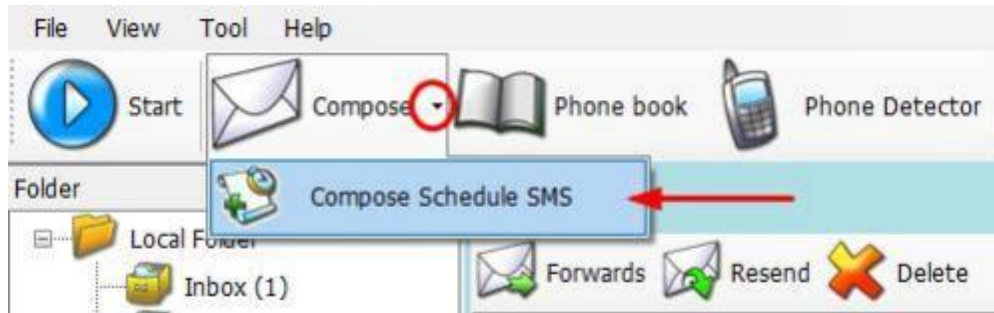


定时发送

Compose Schedule

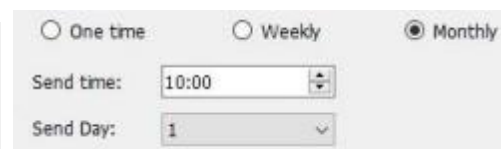
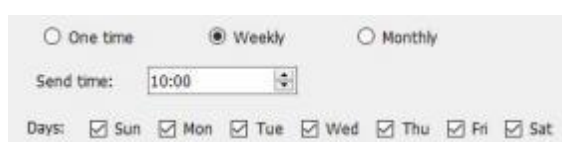
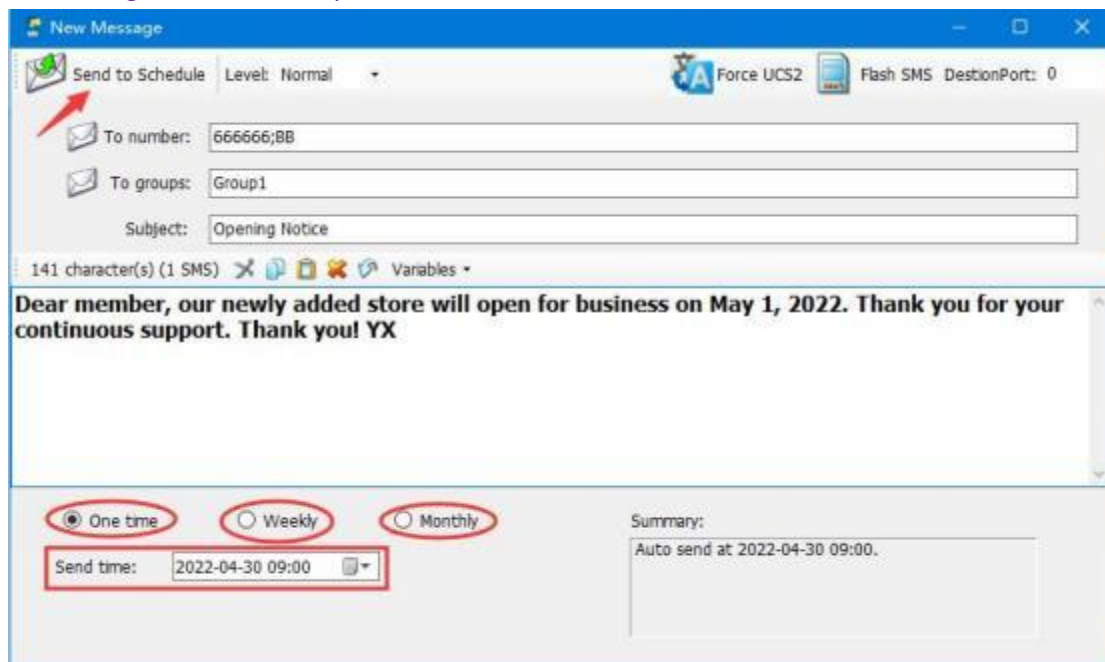
点击“Compose”旁边的那个小三角形, 点击“Compose Schedule SMS”

Click on the small triangle next to "Compose" and click on "Compose Schedule SMS"



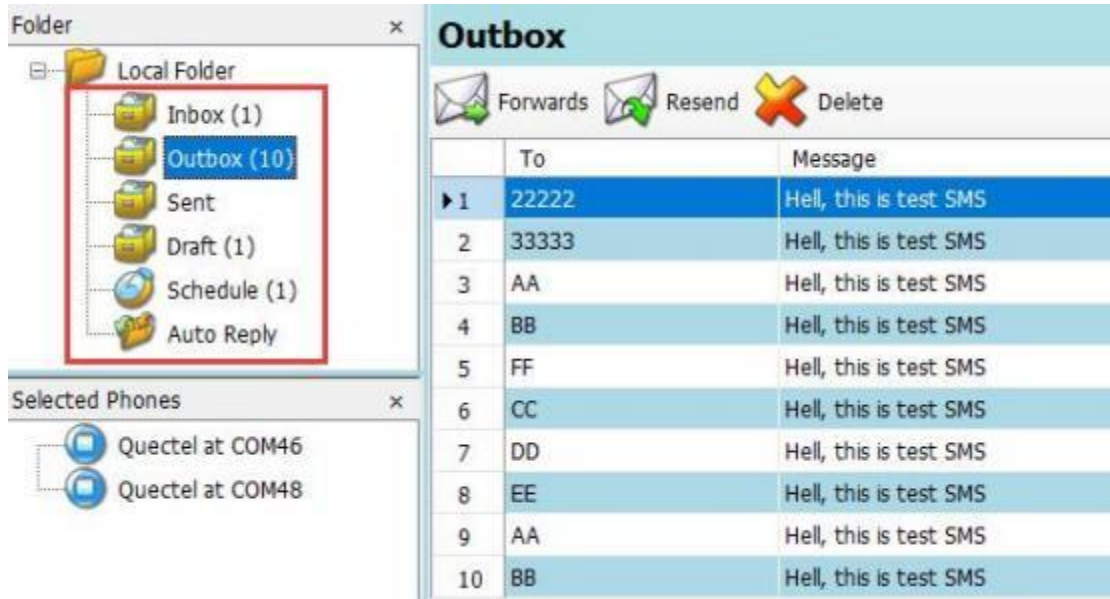
输入需要发送短信的号码或者分组，填写好短信内容，发送类型可以选择“单次”“每周”“每月”，“Send time”栏目设置你希望几点钟开始执行发送短信任务，当到达指定时间，将会自动开始发送

Enter the number or group that needs to send the text message, fill in the content of the text message, and select the sending type from "One time", "Weekly", "Monthly". Set the "Send time" column to the time you want to start sending the SMS. When the specified time is reached, the sending will automatically start



数据和记录查看，点击下图各项，将会在右边显示所有的数据和记录

View data and records, click on each item in the following figure, and all data and records will be displayed on the right side

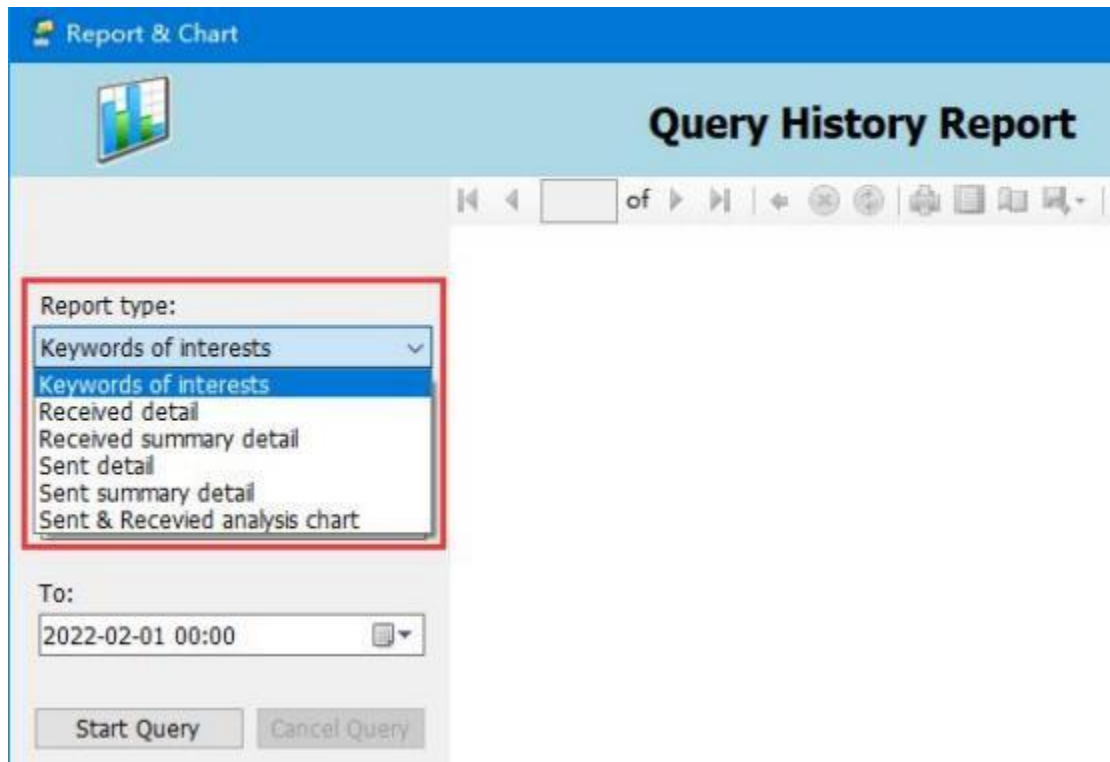


报告查询和下载 [Report Query and Export](#)

点击“Reports” [Click “Reports”](#)

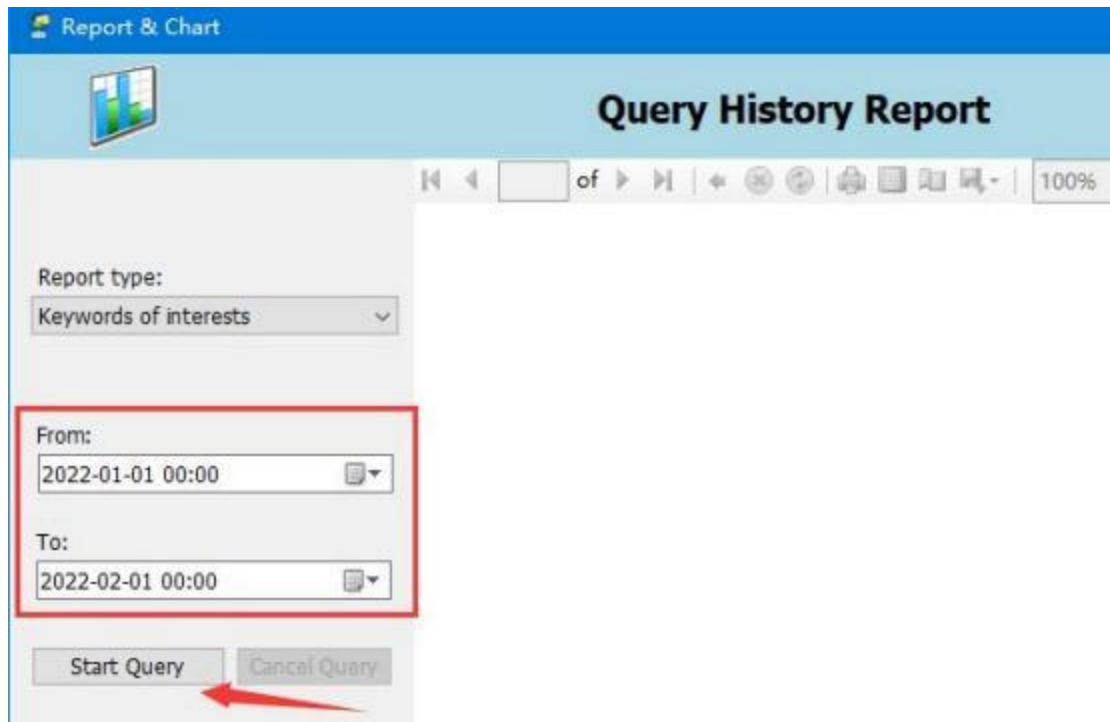


选择报告类型“Report type” [Select the report type “Report type”](#)



选择需要查询的报告开始和结束时间，点击“Start Query”

[Select the start and end times of the report you want to query, and click on "Start Query"](#)



生成报告之后，点击保存/下载的图标，选择你希望导出的文件格式即可

After generating the report, click on the save/download icon and select the file format you want to export

