

# SMS Modem install manual

**YX International Information Co., Ltd**

**Email:** [noc@yxinternet.com](mailto:noc@yxinternet.com)

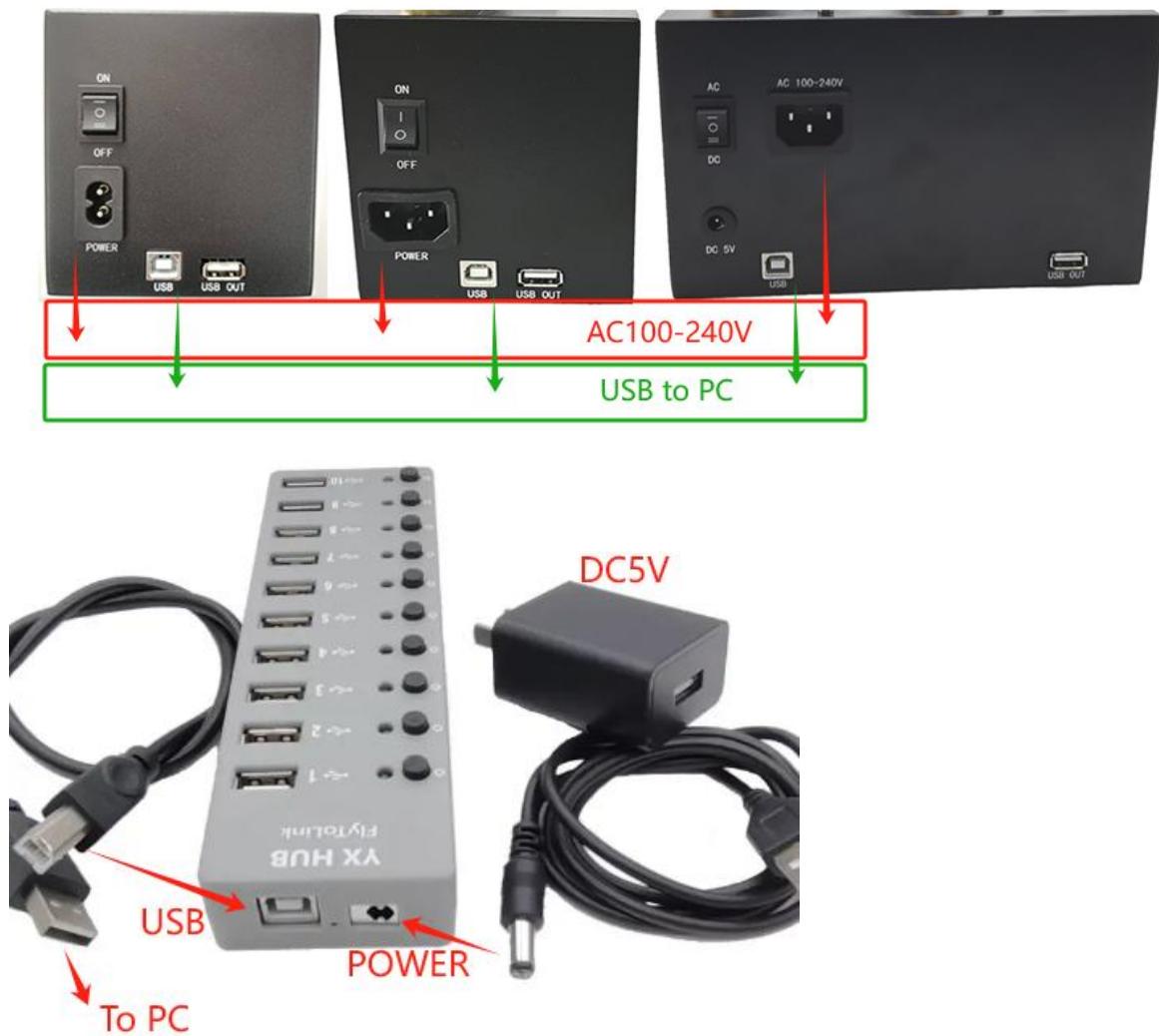
**Store:** <https://yxinternet.com>

## Directory

1, SMS Modem contact PC .....	3
2, Install driver .....	4
1,Open the “Device Manager ”(devmgmt.msc) .....	4
2,Install driver (Download the driver) .....	5
3, Install SMS Caster E-Marketer software .....	8
4, The use of SMSCaster E-Marketer .....	13
1,Use the information .....	13
2,Send SMS .....	15
3,Other features(Automatically add prefix, intermittent sent, Multitasking is sent, Timing task) .....	17
4,Import contacts list .....	21
5,Add Groups .....	26
5,FAQ .....	28
6,Change IMEI/Send USSD/Call/Put in PIN/PUK code(AT command) .....	30
Change IMEI .....	30
CALL .....	31
Send USSD .....	31
Put in PIN/PUK code .....	32

# 1, SMS Modem contact PC

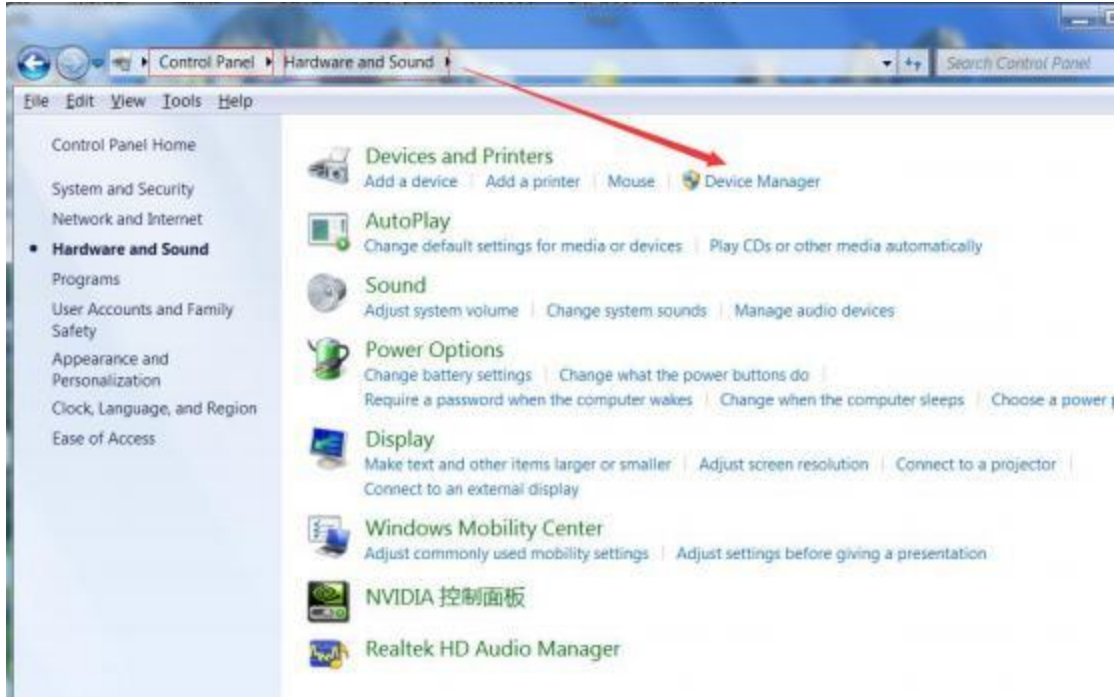
- ① Device USB port contact to PC USB port, For the first time, put CD into the computer, or [Download the driver](#)
- ② Install antenna and SIM card.
- ③ Open SMS Modem power.



If you are using DC 5V USB UART HUB, 4G LTE Dongle need to toggle the small switch to the "Uart" position. (2G GSM Dongle does not have this switch)

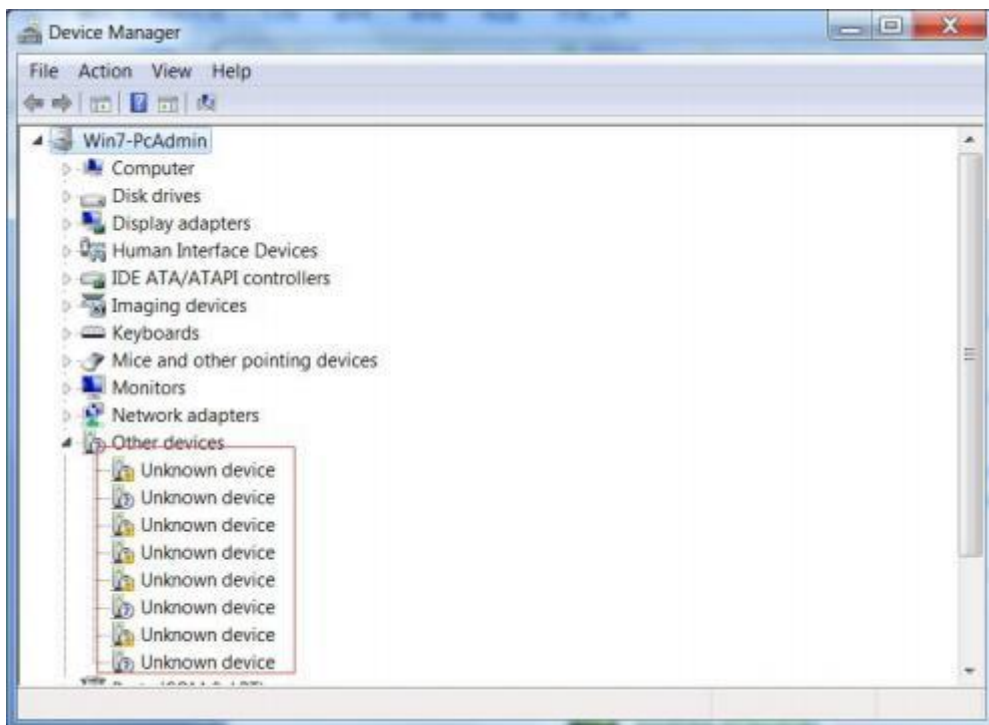


## 2, Install driver



### 1, Open the “Device Manager” (devmgmt.msc)

If **versions below Windows 7**, you can see: in “Other devices”, there is no driver



If **Windows 10 and above**, in “Ports(COM & LPT)” displayed as COMXX, which is not complete driver and needs to be updated



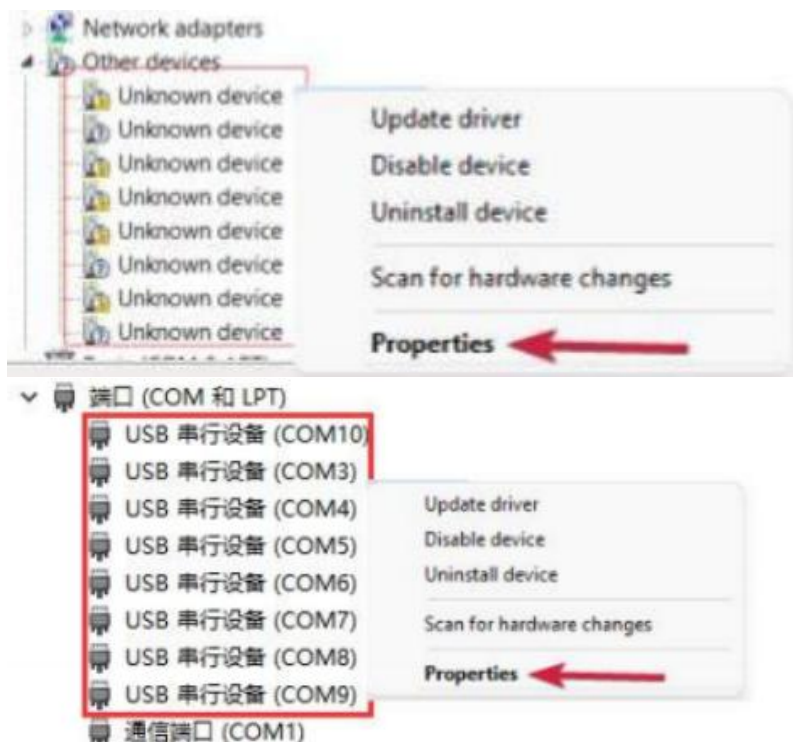
## 2. Install driver ([Download the driver](#))

① Unzip this file , If there is no decompression procedure, please [Download WinRAR](#), and install it



② Install or update drivers:

Right click on "Unknown device" or "COMXX" and follow the steps below





How do you want to search for drivers?

→ **Search automatically for drivers**

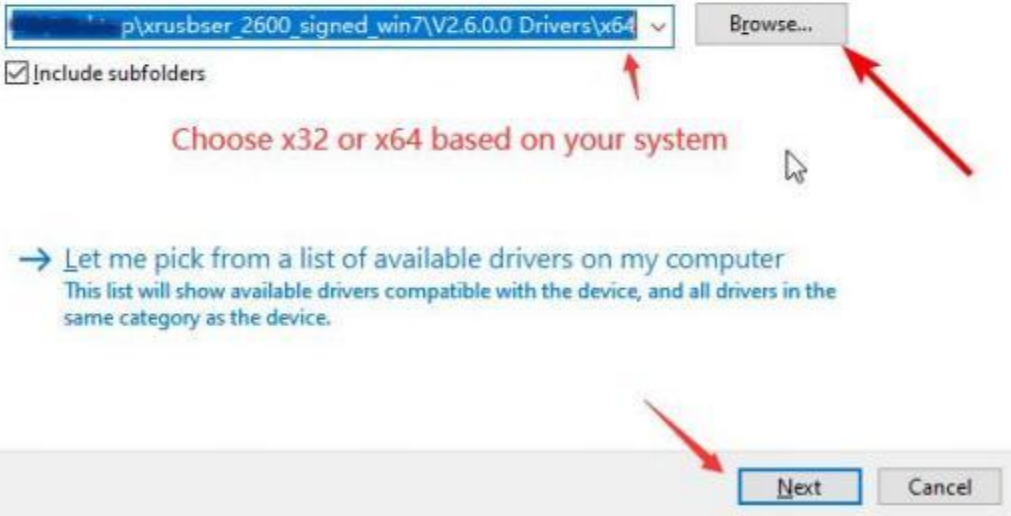
Windows will search your computer for the best available driver and install it on your device.

→ **Browse my computer for drivers**

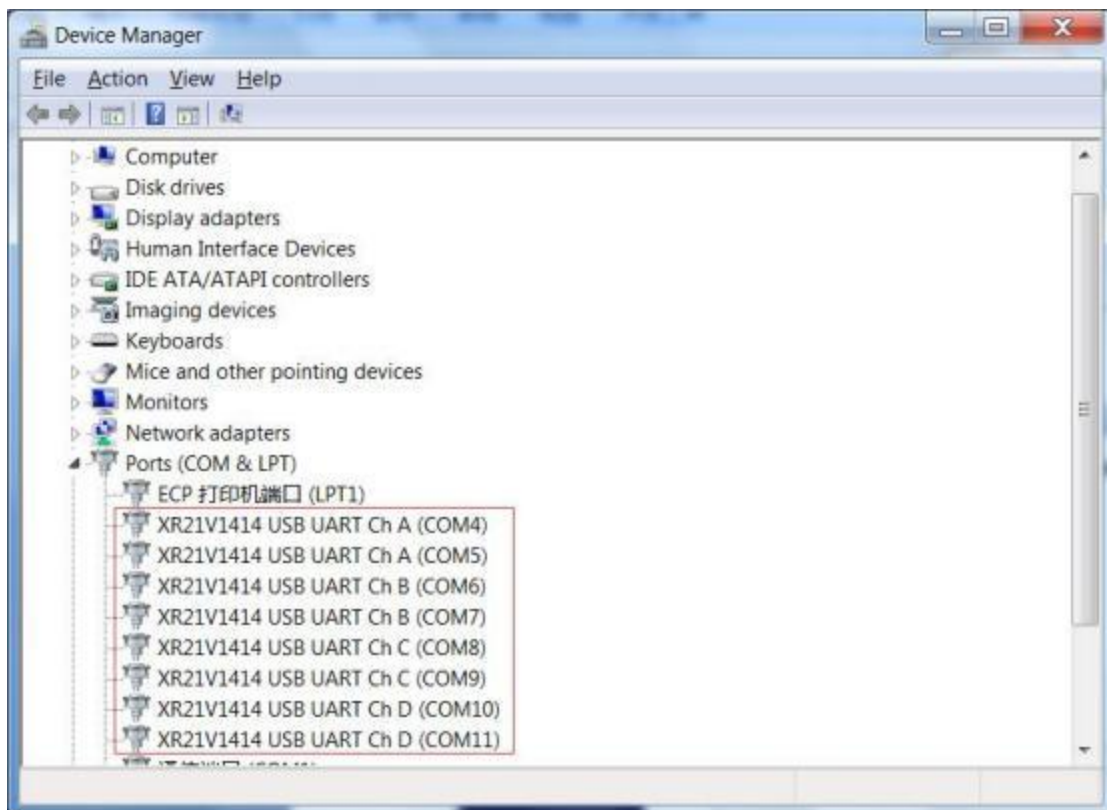
Locate and install a driver manually.

### Browse for drivers on your computer

Search for drivers in this location:



③ After the driver installation or update is completed, “XR21V1414.....(COMXX)” will be displayed.

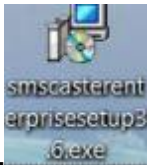




### 3, Install SMS Caster E-Marketer software

(If the module used is EC200A/ UC20/ UC200T/ UG96, it is recommended to use "[SMS Deliverer](#)" which would be more suitable)

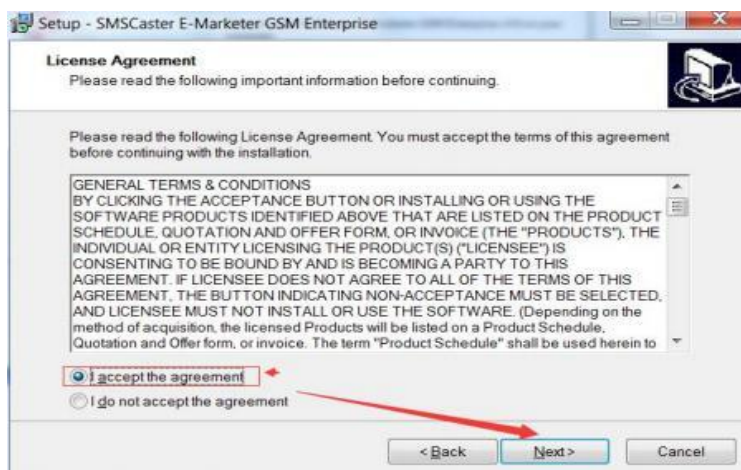
#### 1, [Download SMSCaster](#)



2, open it, click Next

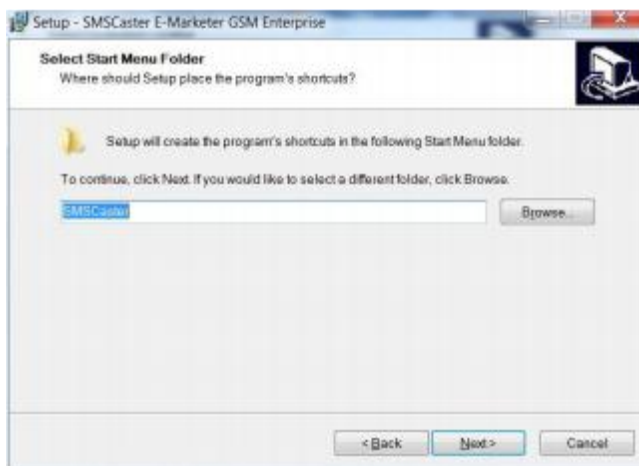
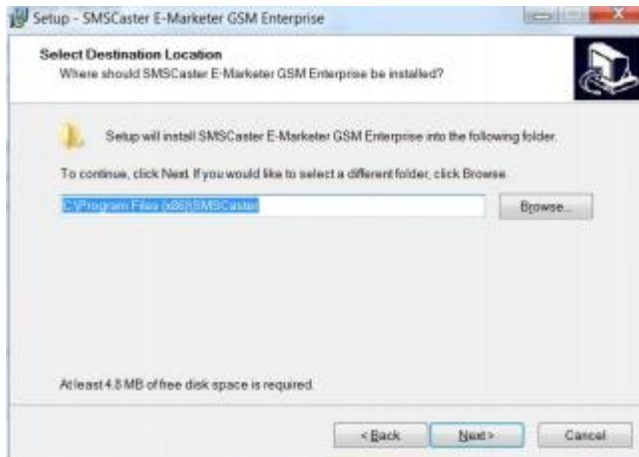


3 As shown in figure

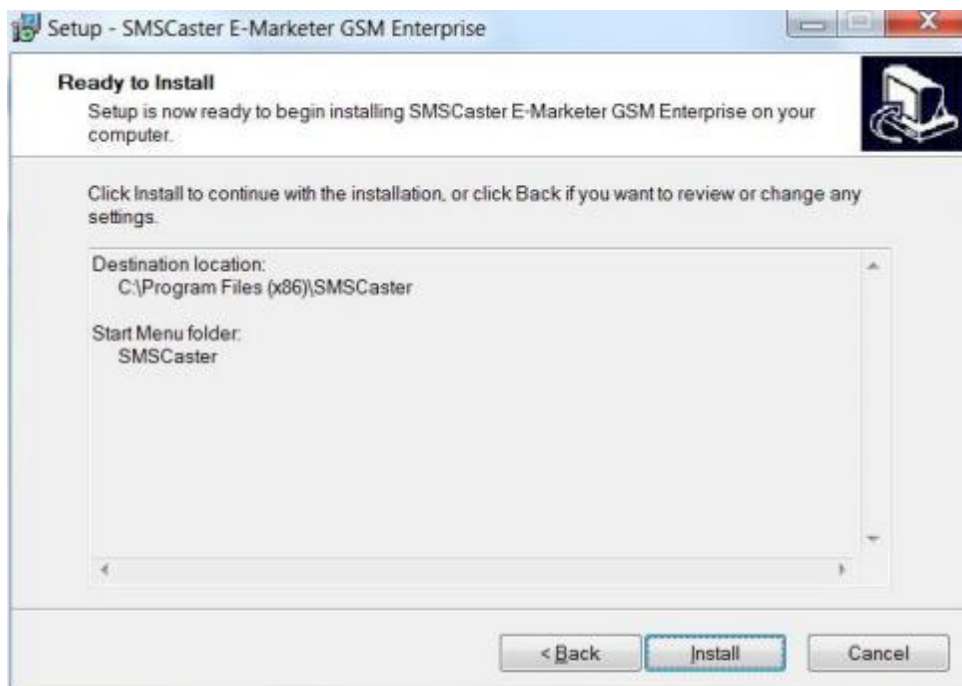




## 4 Next, and continue Next



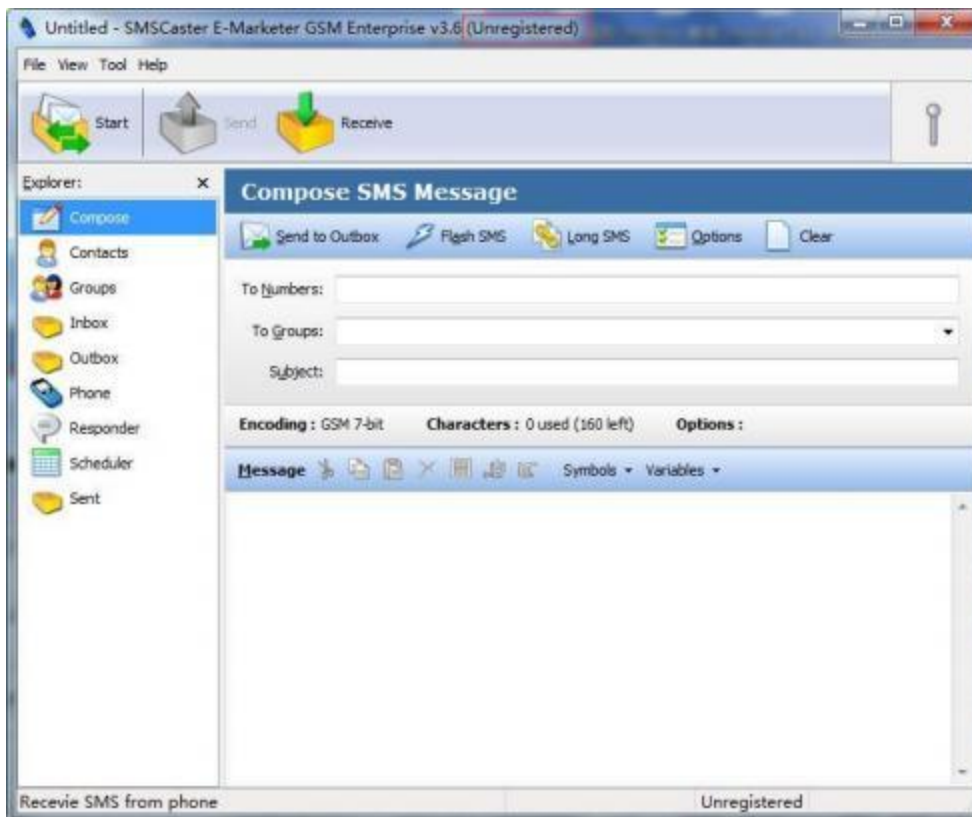
## 5 click Install



6, Install done, click Finish

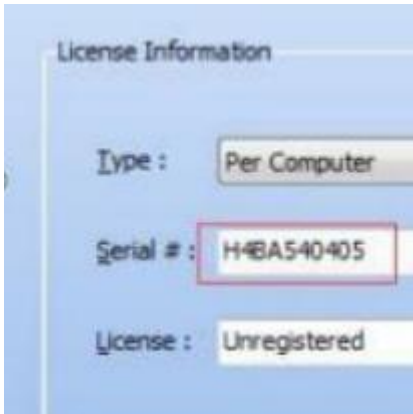


7, software registered, As shown in figure, just installed software shows Unregistered. So it need to be registered.





1, Click on the “Help-About” , Copy the content about “Serial#” to our engineers, we will generate a unlock key to you.



2, open it , Copy the generated content to “Unlock key”, click “ok”



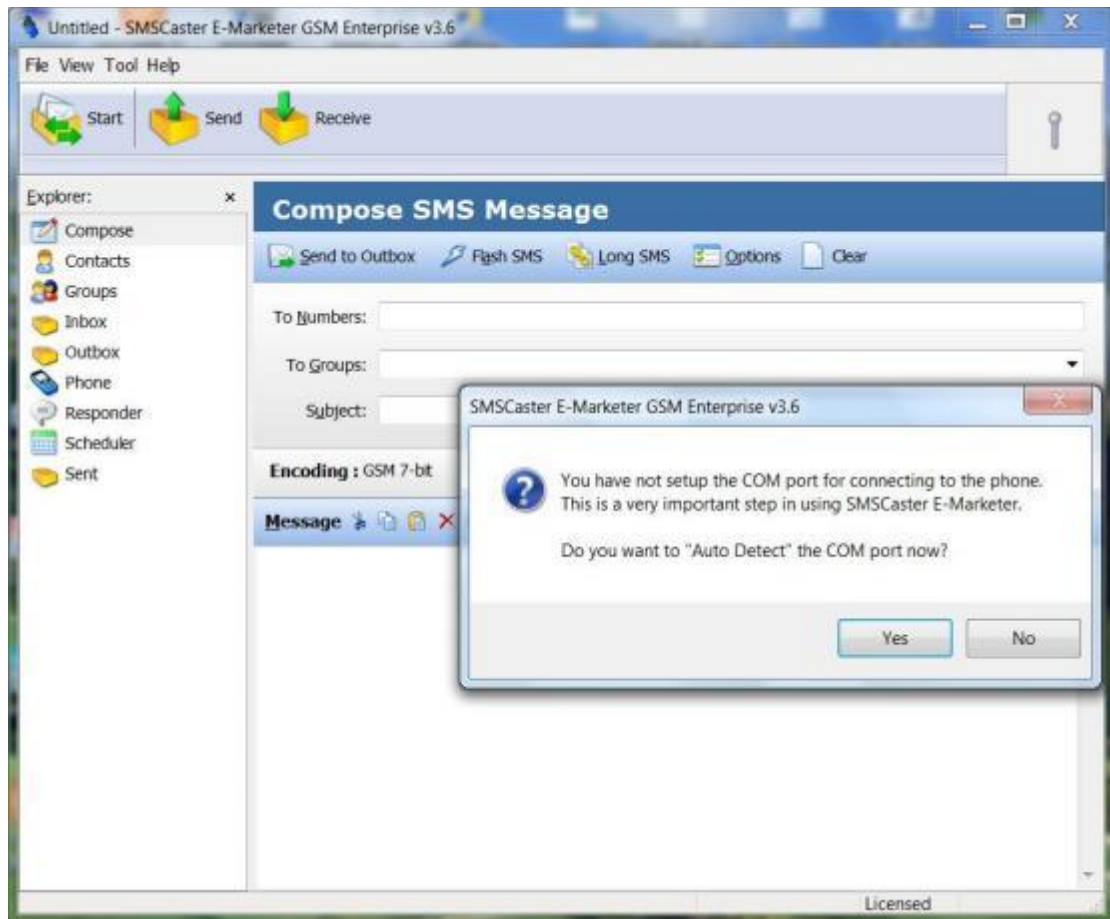
3,if the “ Unregistered” is disappeared, it mean registered is success. If not, please do it again about registered steps.

## 4, The use of SMSCaster E-Marketer

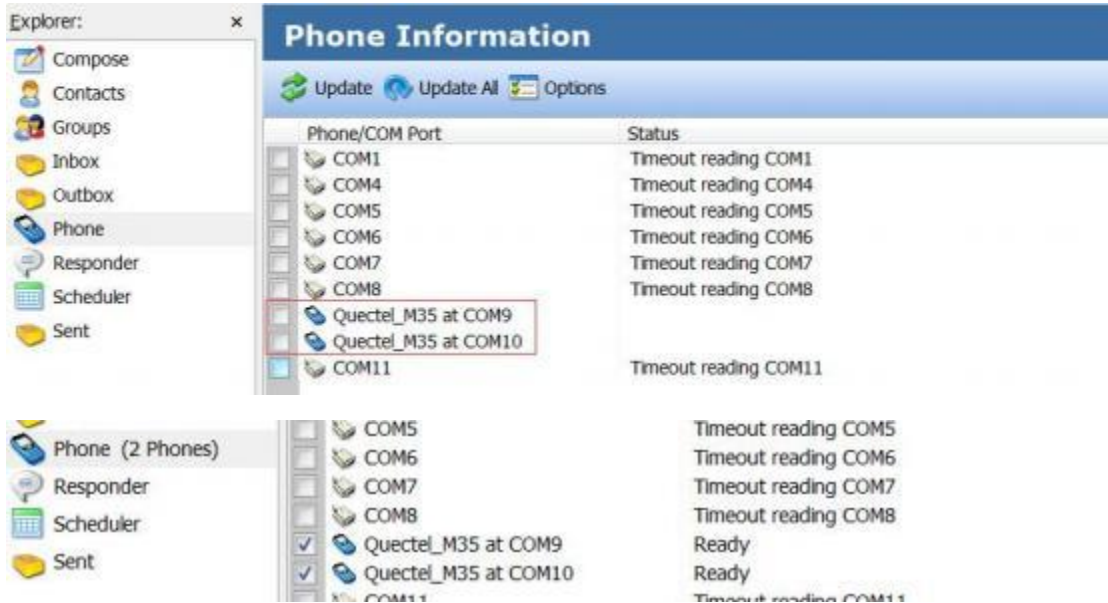
### 1,Use the information



1,open SMSCaster E-Marketer,If you didn't choose any port in advance, It will promptly check COM list. Select "Yes".



2,it mean ,this COM port have SIM card, and it have read this SIM card ,if you select it ,The "Status" will "ready".

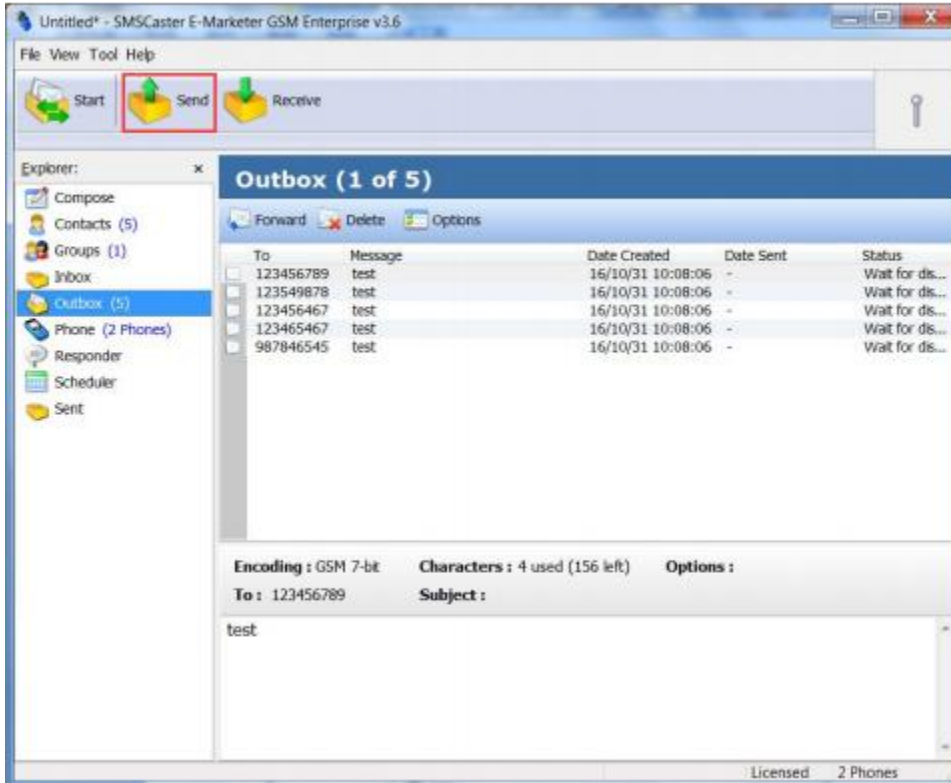
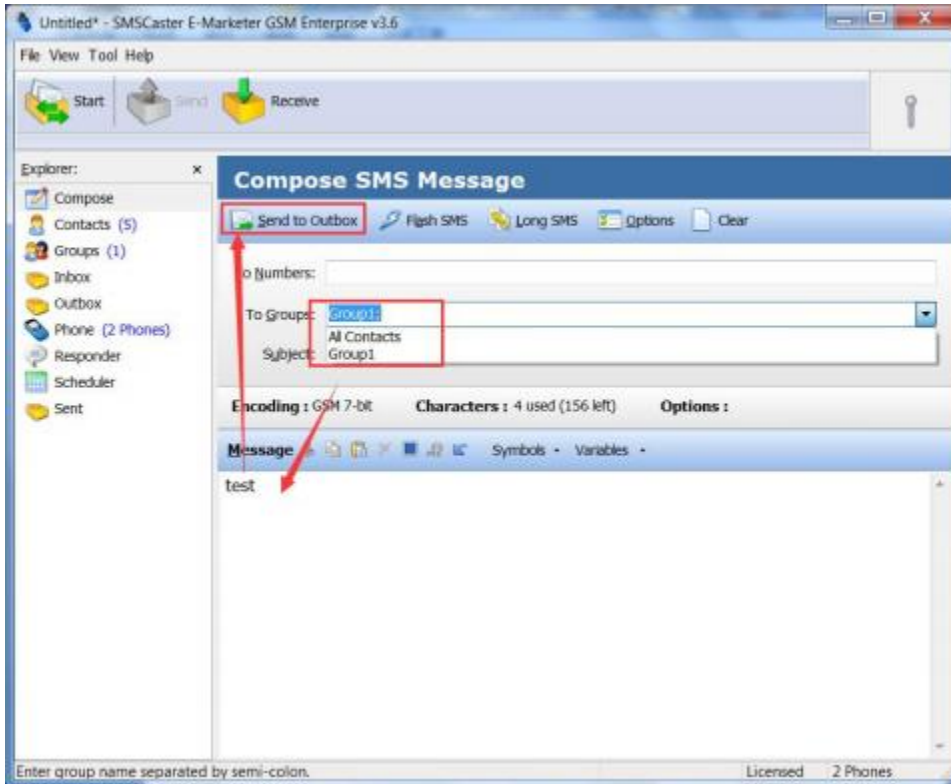


Select done ,it means , it will use them to send SMS. If you need to close the software, it is better do not select any com port , otherwise, you can't see the COM list when you open again, than you need to re-install the software again.



## 2,Send SMS

Select Groups or all (default all) => Input Message content => click  
“Send to Outbox” =>check Outbox (click “Send”)

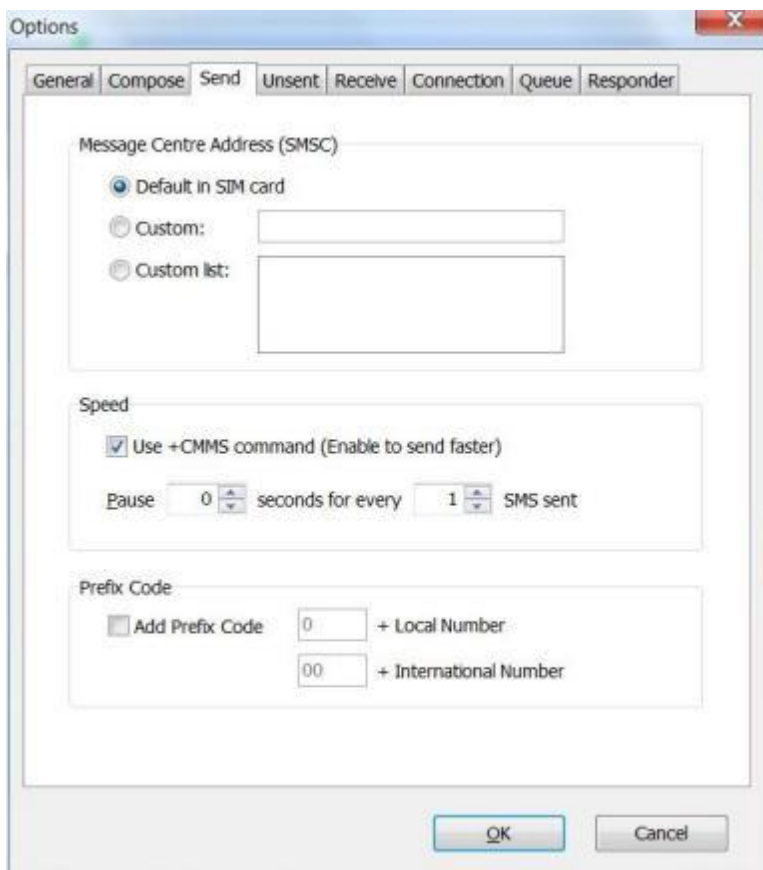


Send SMS, if successful, the message will be saved in “Sent”, the failed message will keep in “Outbox”

### 3,Other features(Automatically add prefix, intermittent sent, Multitasking is sent, Timing task)



Automatically add prefix, intermittent sent, As shown in figure:

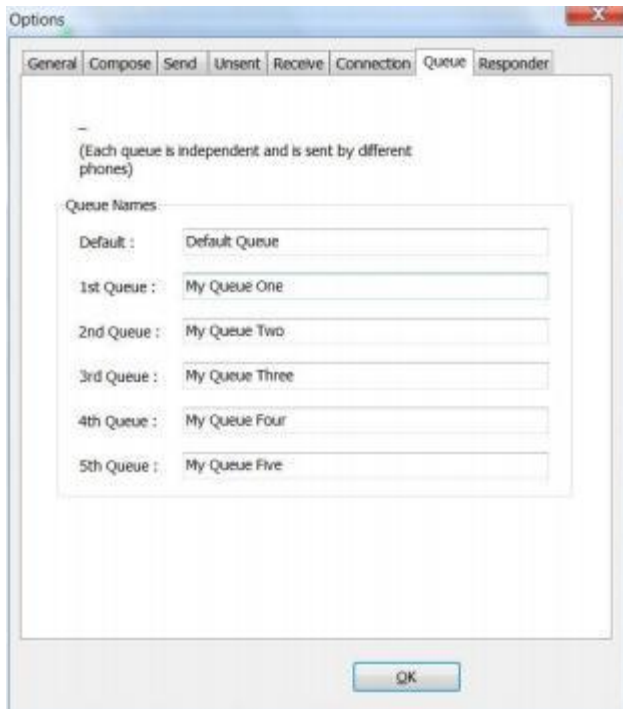


Multitasking is sent:

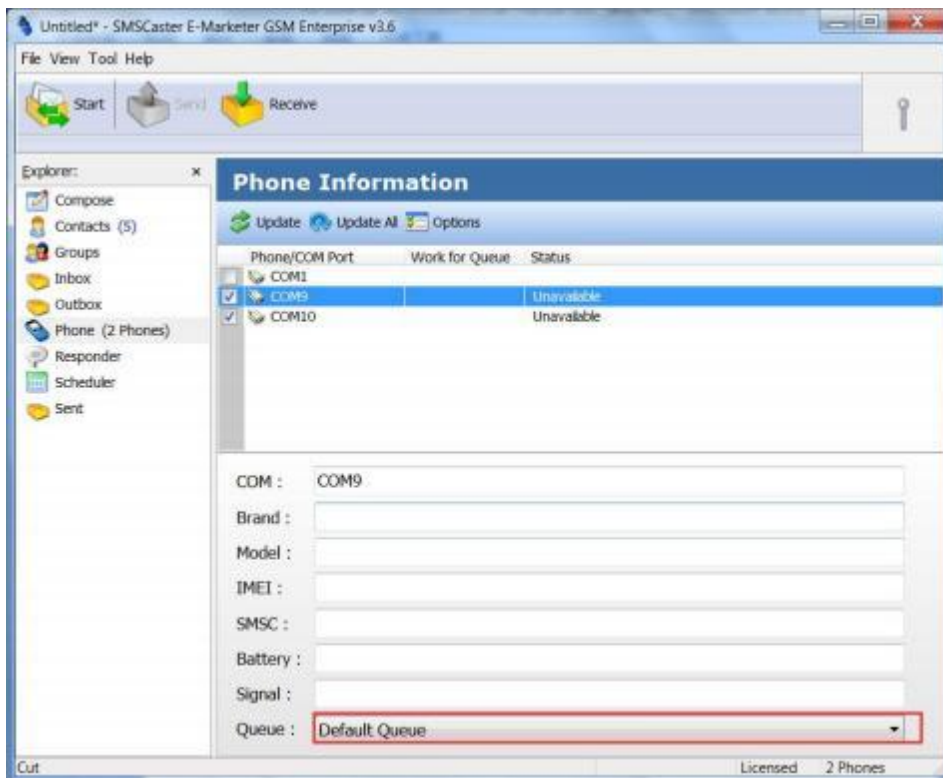


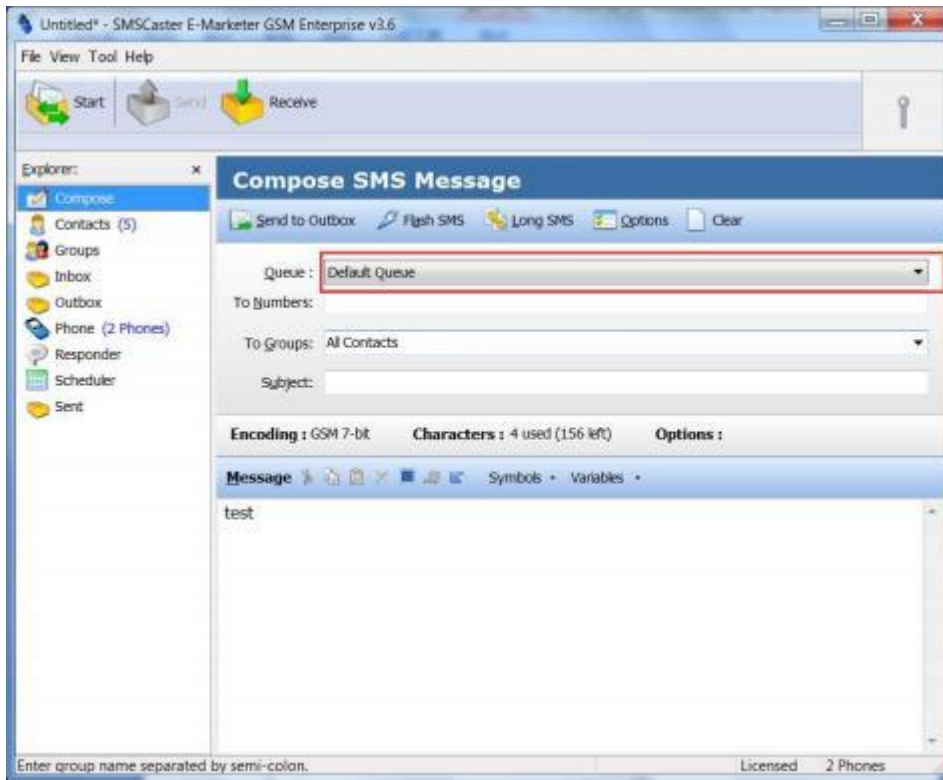
need open this

## function

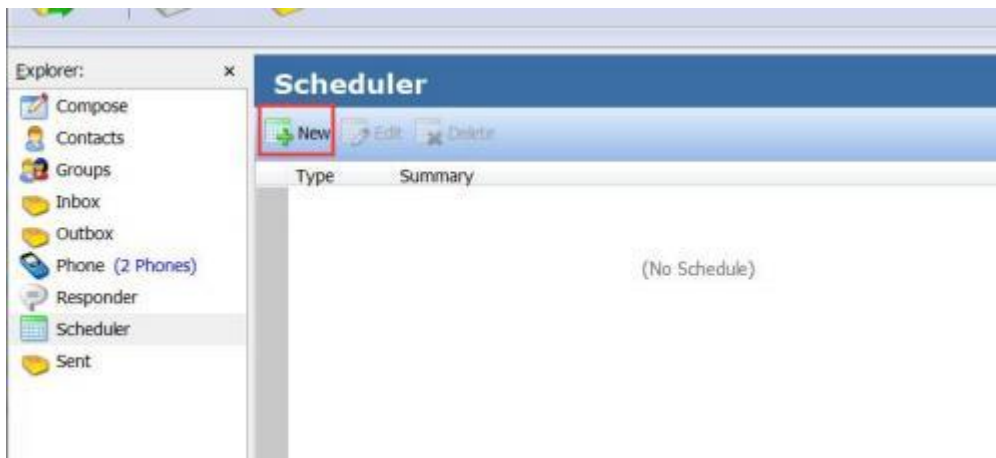


After open the multitasking function, you need to set COM in which Queue, and also need to select Queue when Add to the Outbox.





Timing task:( Please see prompt box)



New Schedule X

### One Time Schedule

Type :  One Time  Daily

Task : Send & Receive

Start at : 2016/10/31 Time : 11:08 上午

Stop at : 16/10/31 Time : 4:08 下午

Summary  
Auto send and receive at 11:08 Today.

New Schedule X

### Daily Schedule

Type :  One Time  Daily

Task : Send & Receive

Day :  Mon  Tue  Wed  Thu  Fri  Sat  Sun

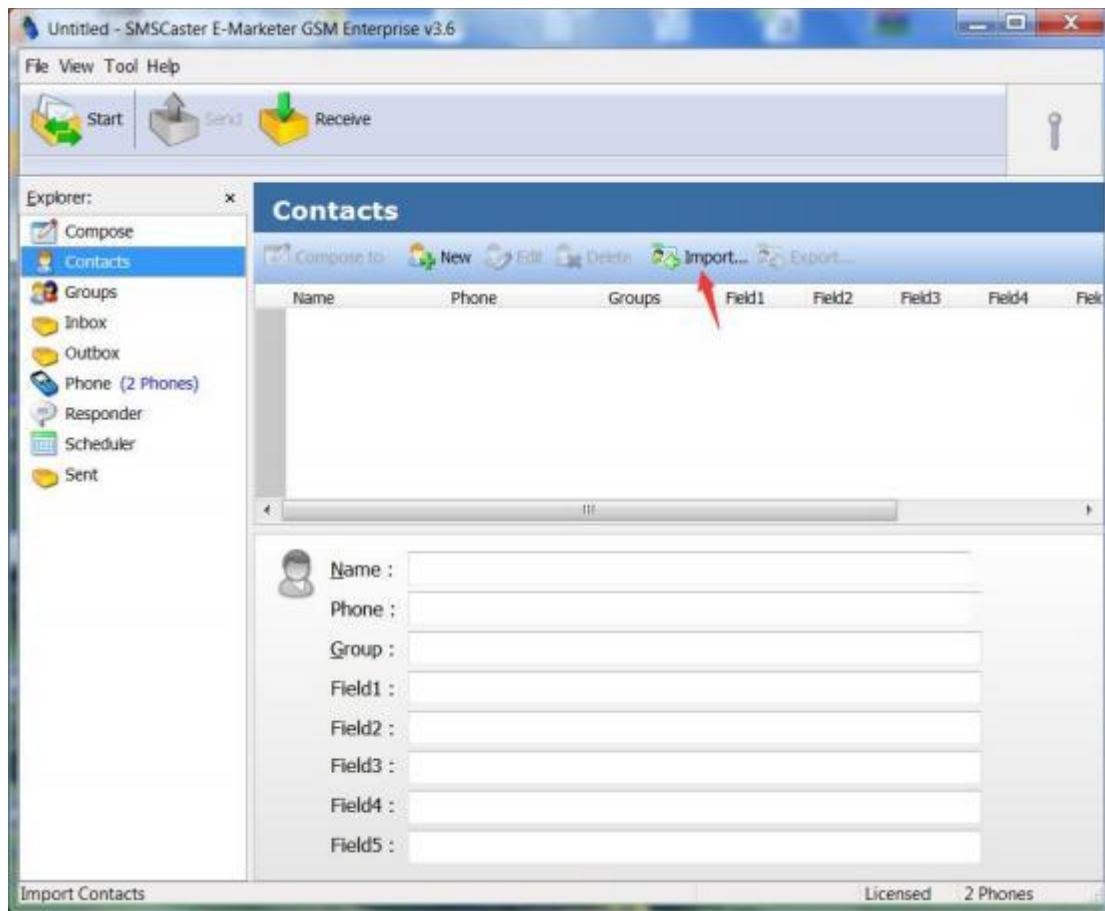
Start at : 8:00 上午

Stop at : 6:00 下午

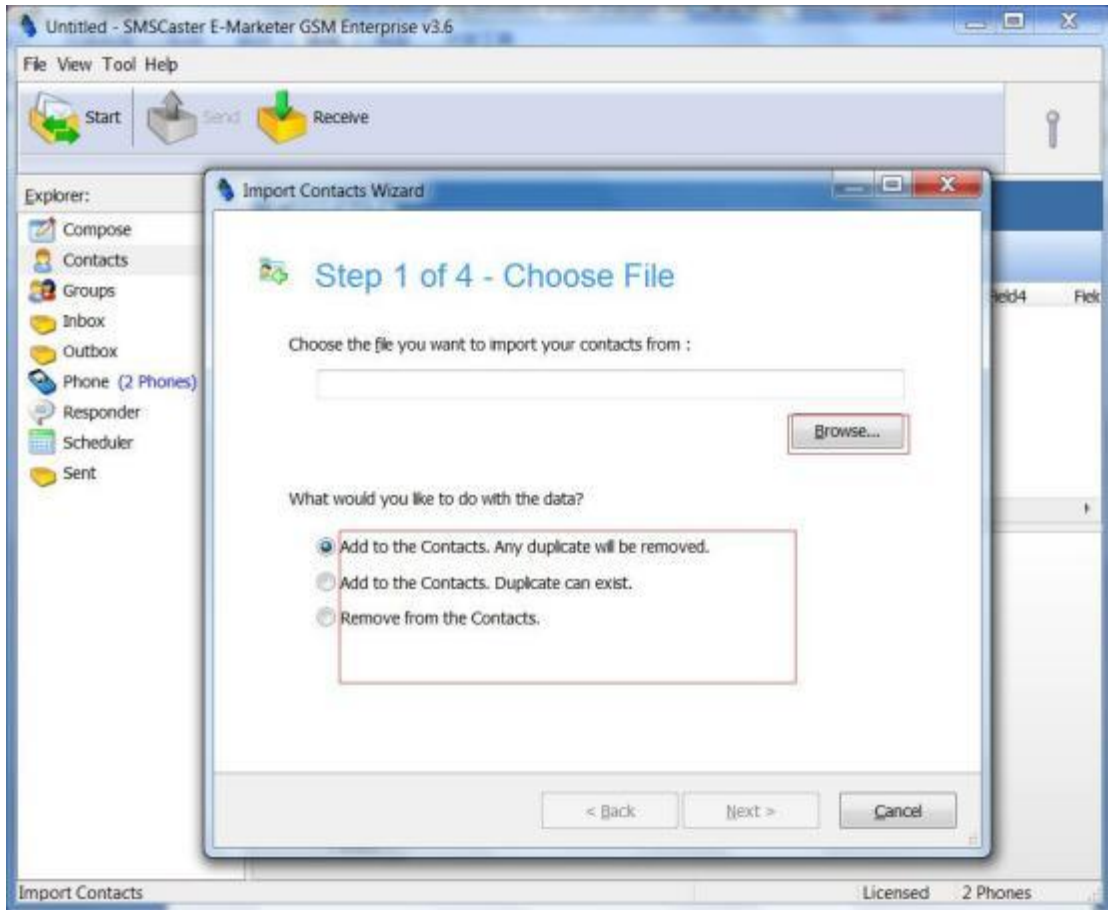
Summary  
Auto send and receive at 8:00 everyday.



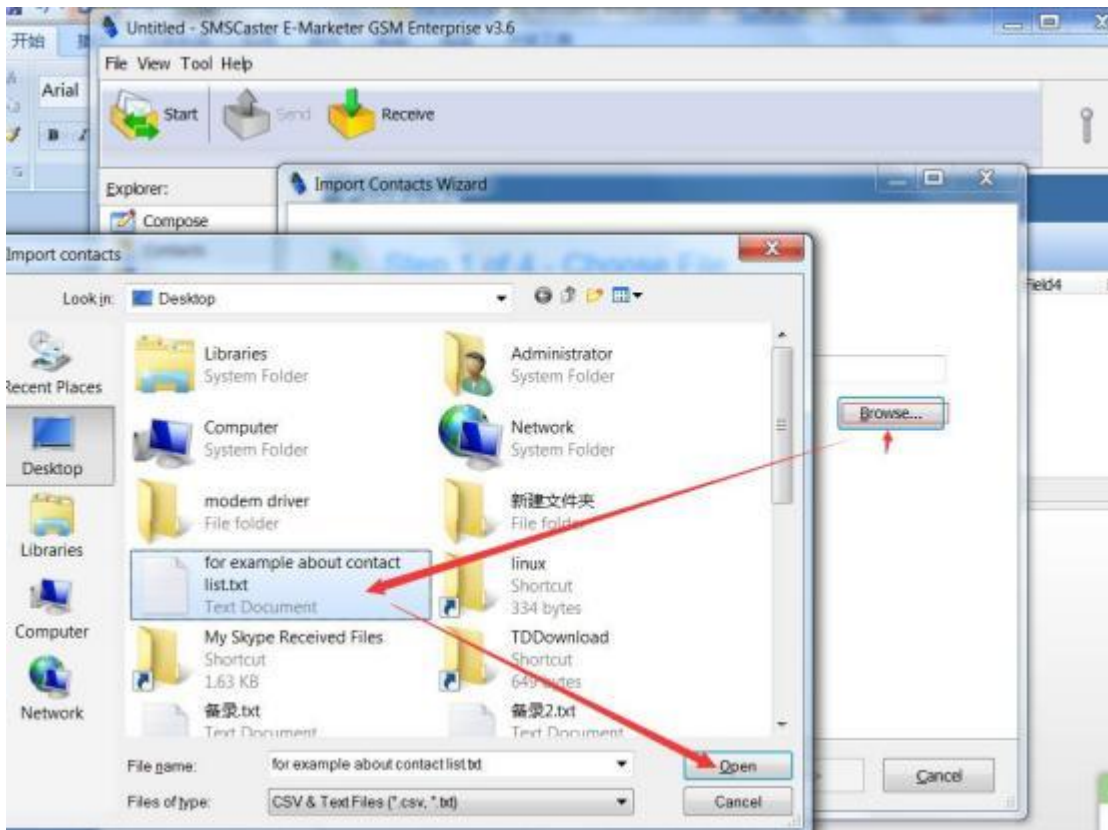
## 4, Import contacts list



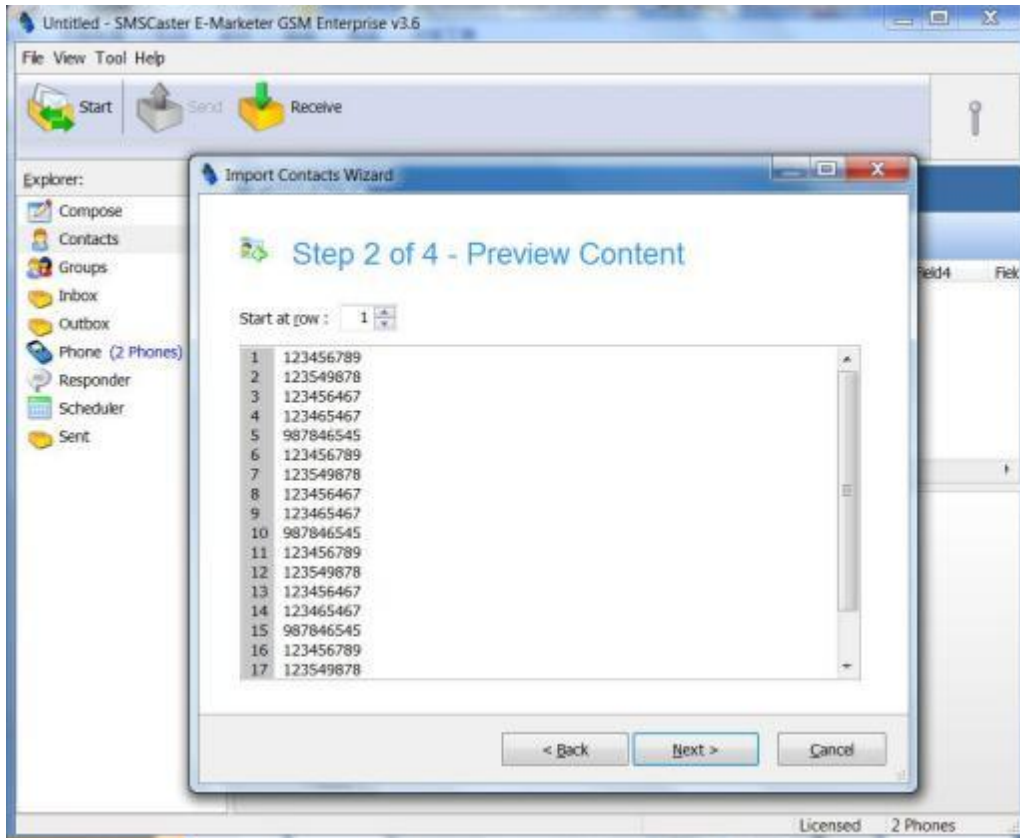
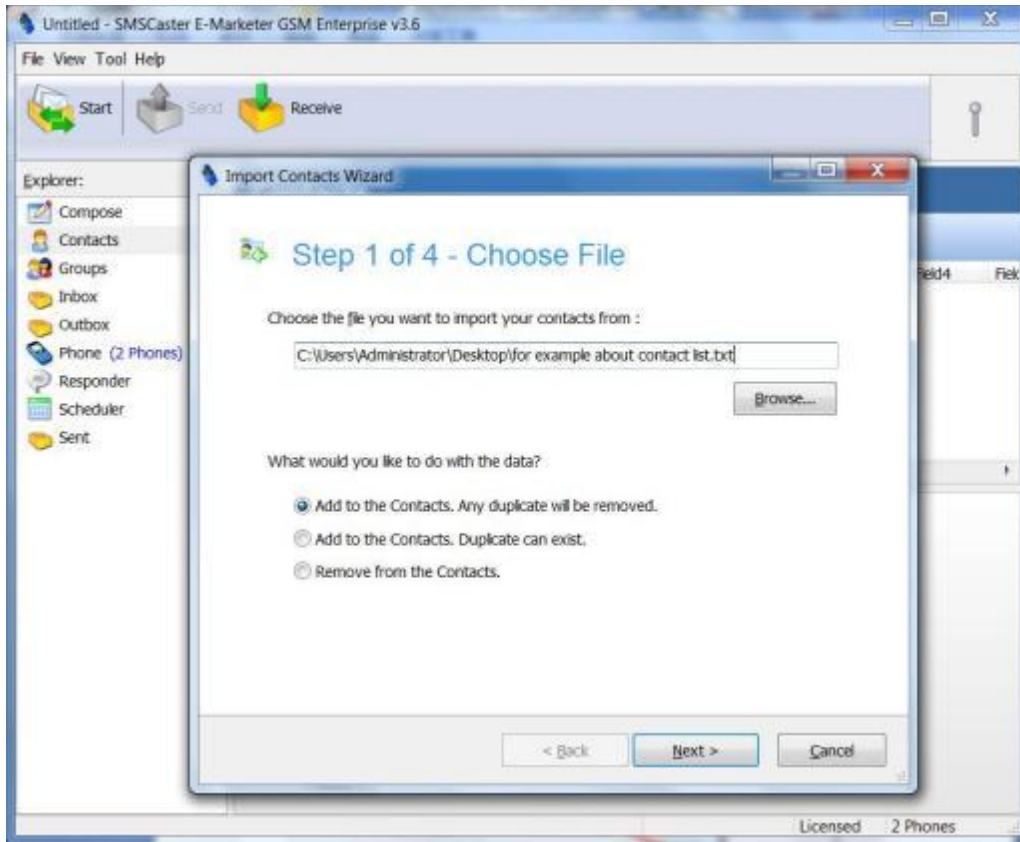
1, Please pay attention to choose the option below(Details please see the options, For example: The first is default, it means it will delete duplicate number When adding)



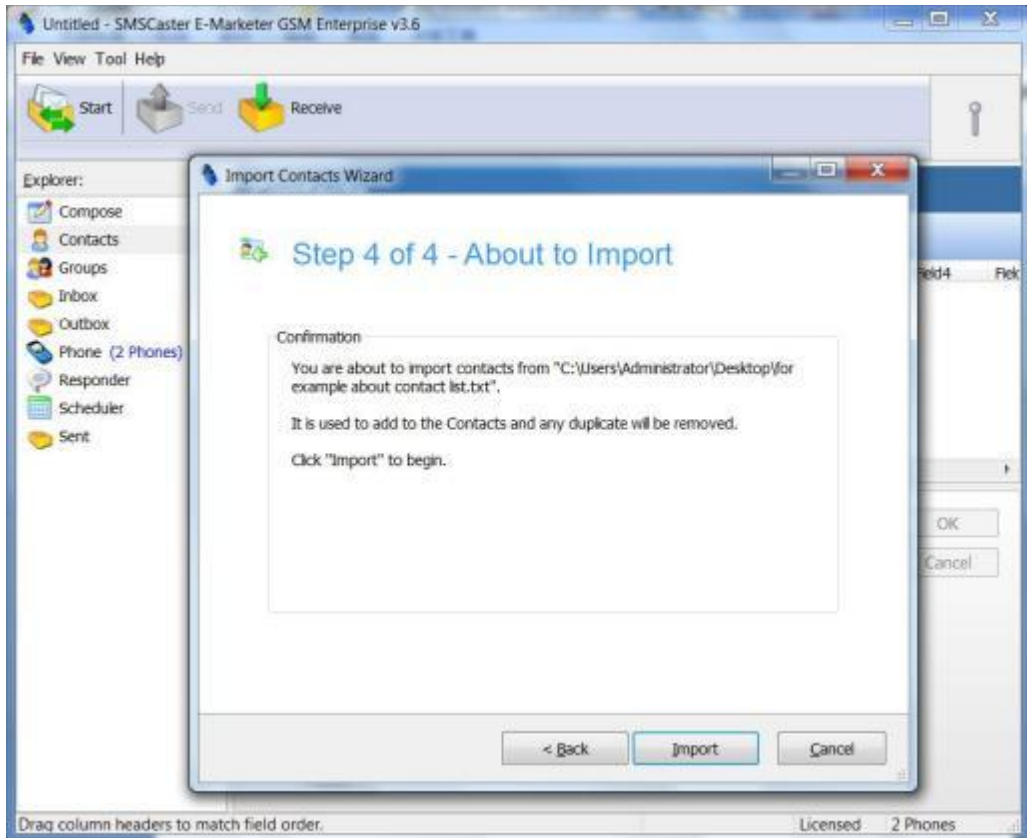
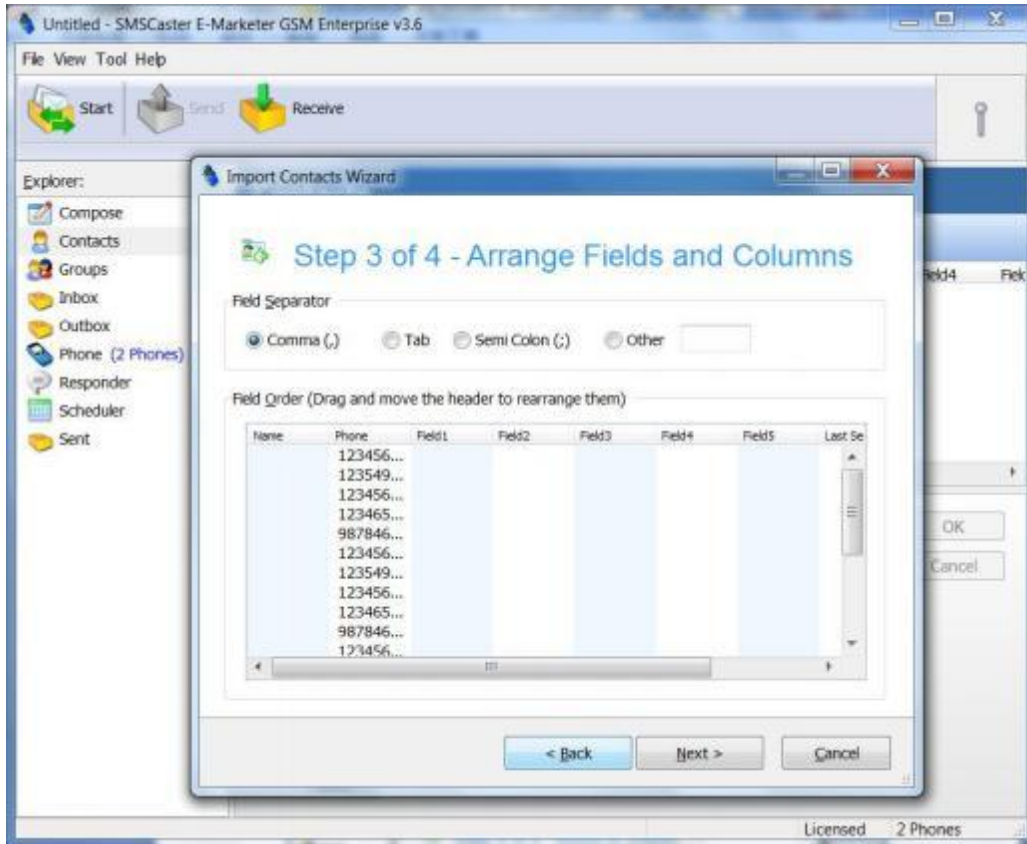
2, Select the file(csv or txt )



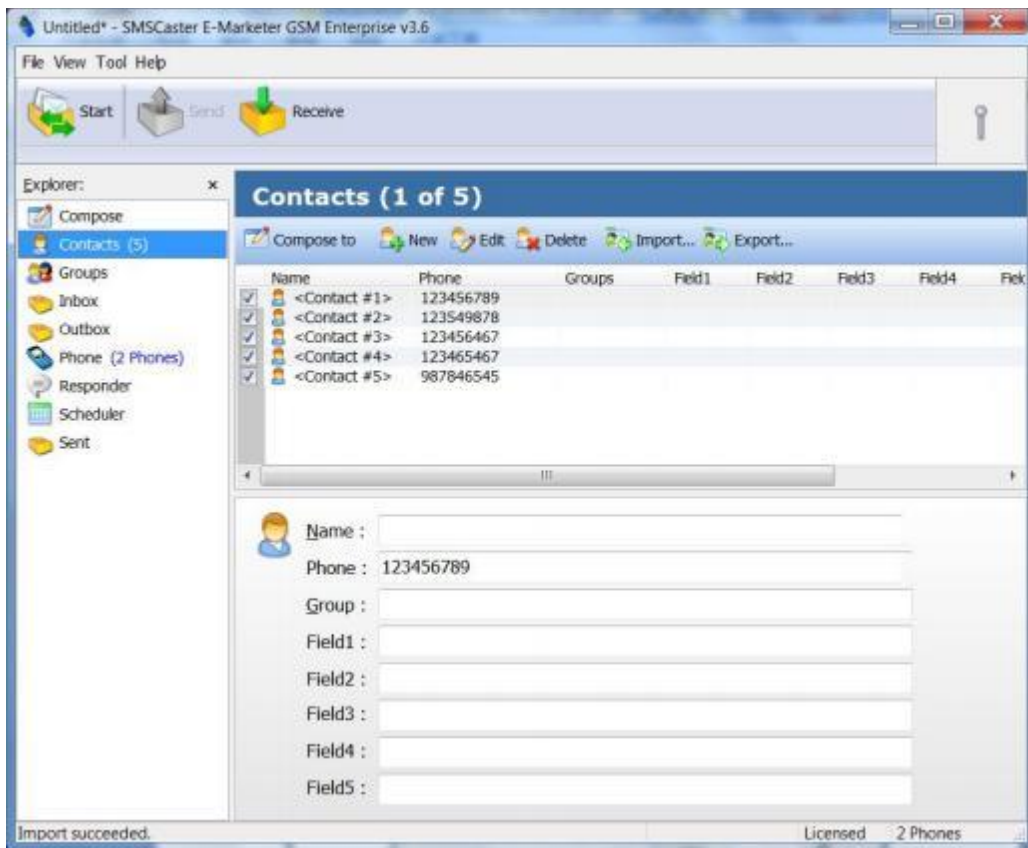
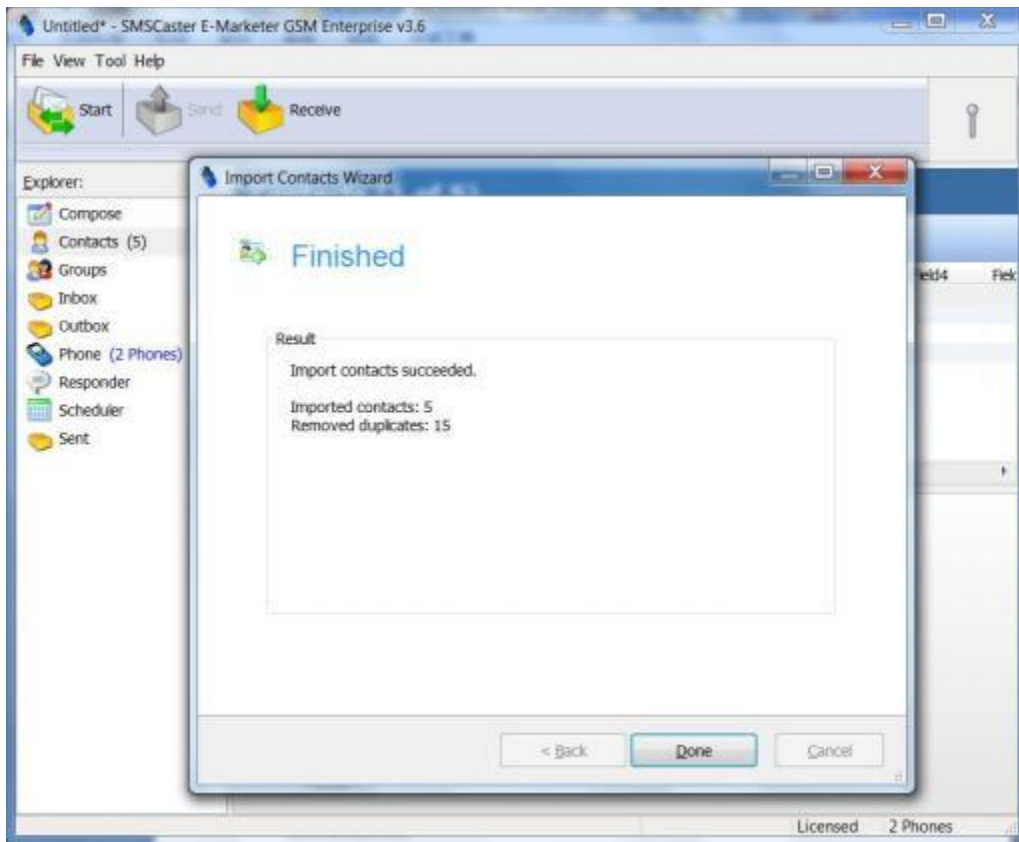
Click "Next"



Please pay attention to the relevant options, the default click “Next”:



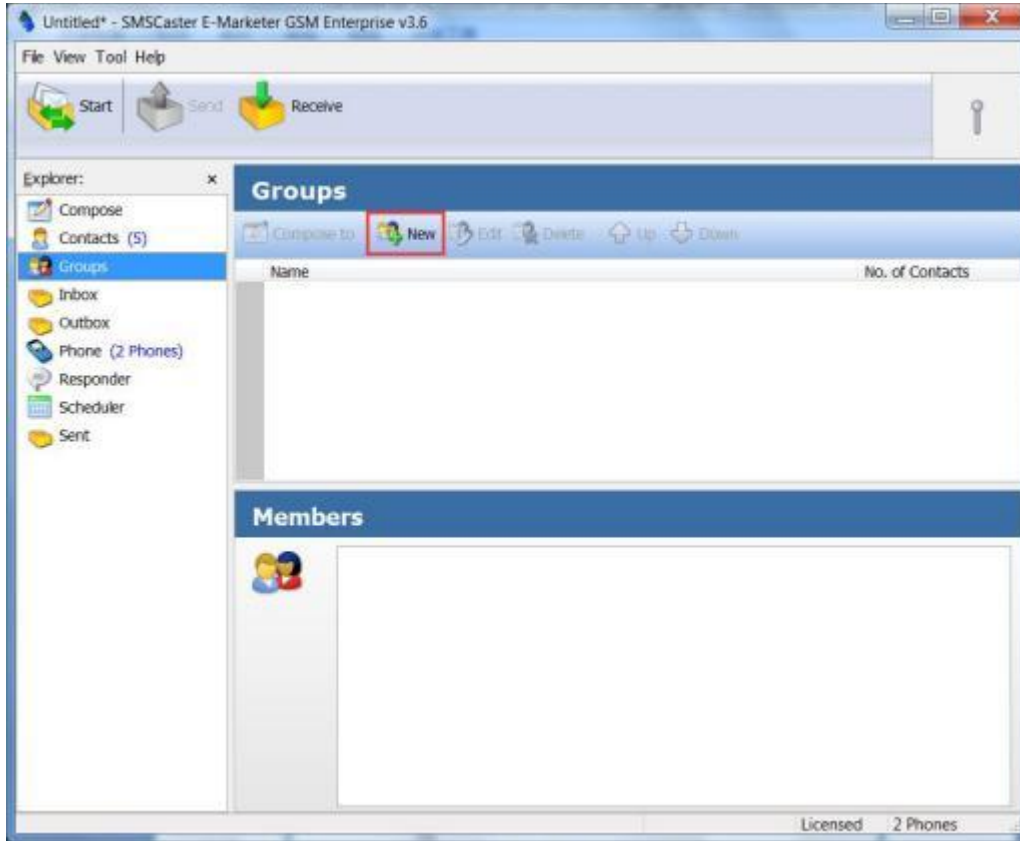
4, Import is done , See the prompt.





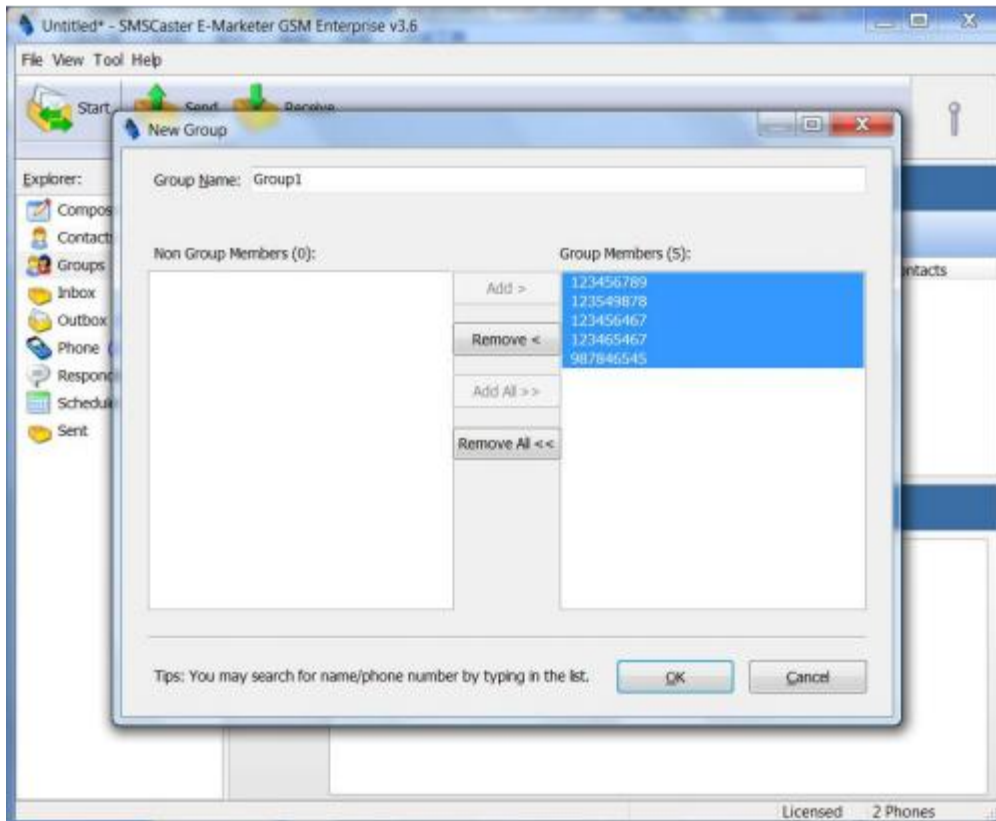
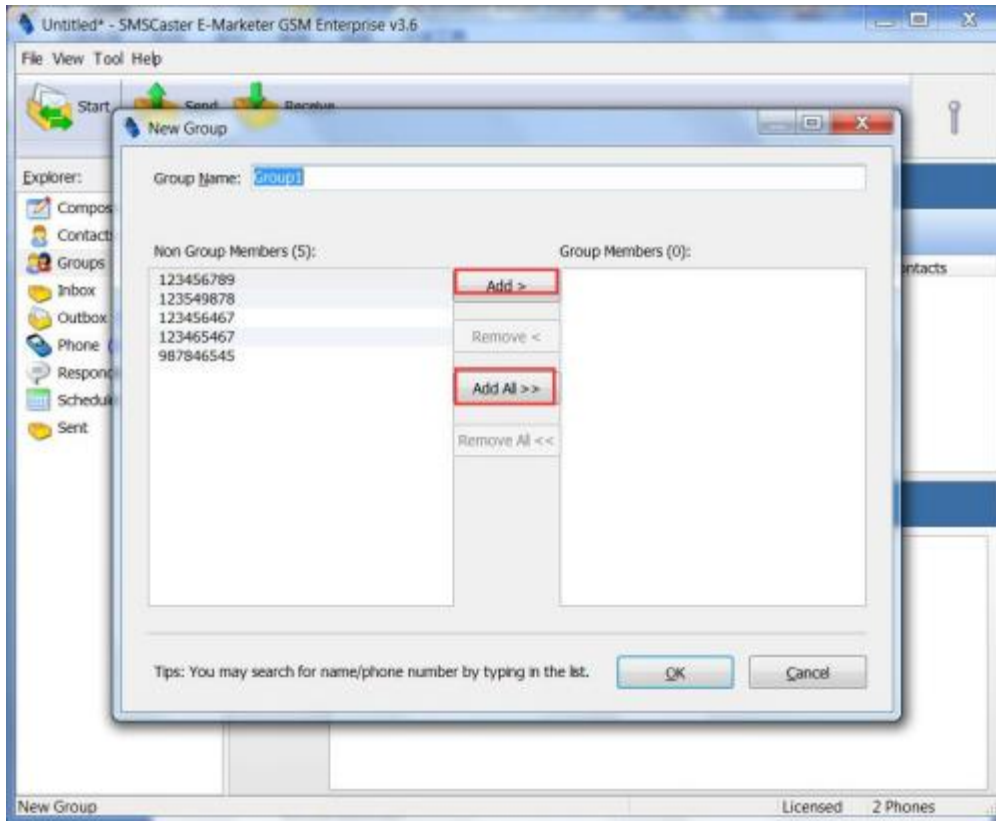
## 5,Add Groups

1,click New

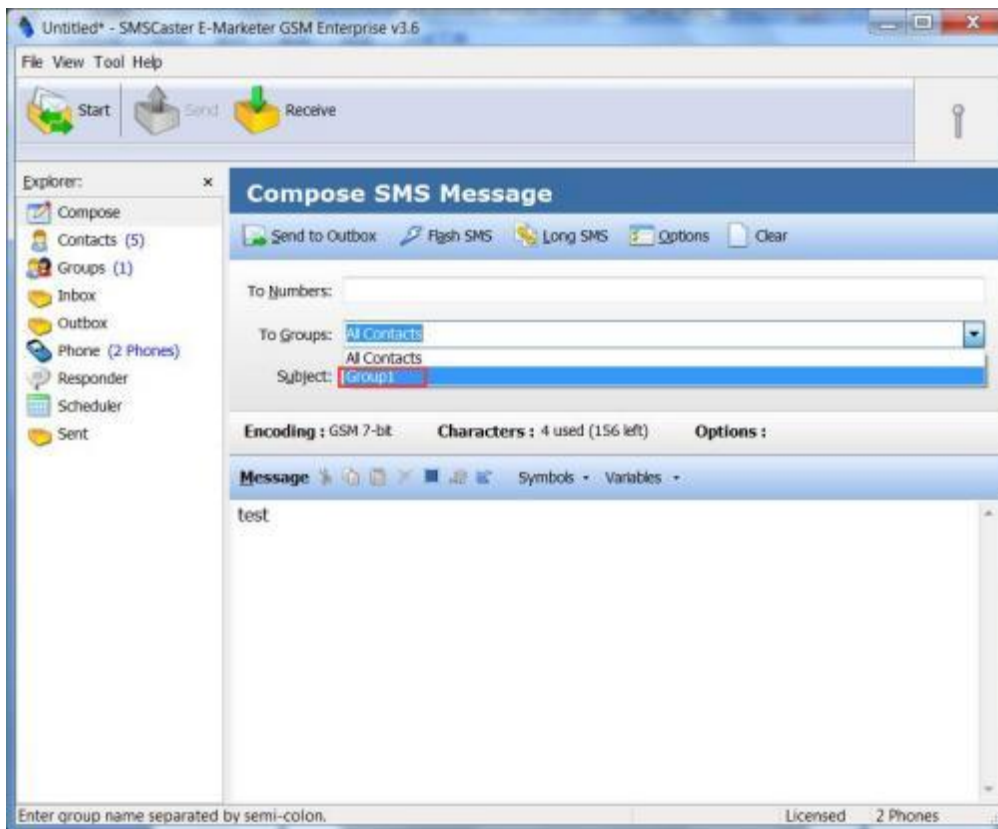




## 2, Input Group Name and select the need to add the number



3,Group add done,please note it that to select the group when adding to outbox.



## 5,FAQ

1, COM and port number is not corresponding, how do I know this port can not use?

Each module has LED lights:

①LED light flash every 3 s, means normal registration card, can be used;

②LED light flash every 1 s or always on, it isn't normal registration card, Need to check the card is installed correctly or not.

③You have installed SIM cards,but device can't read SIM card.

Please re-install SIM card and reboot it port, Installing sim card, the direction of the note card is correct

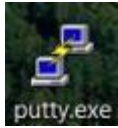
2,COM port have error 2

Please reboot this port or re-install this port(Each module is removable)

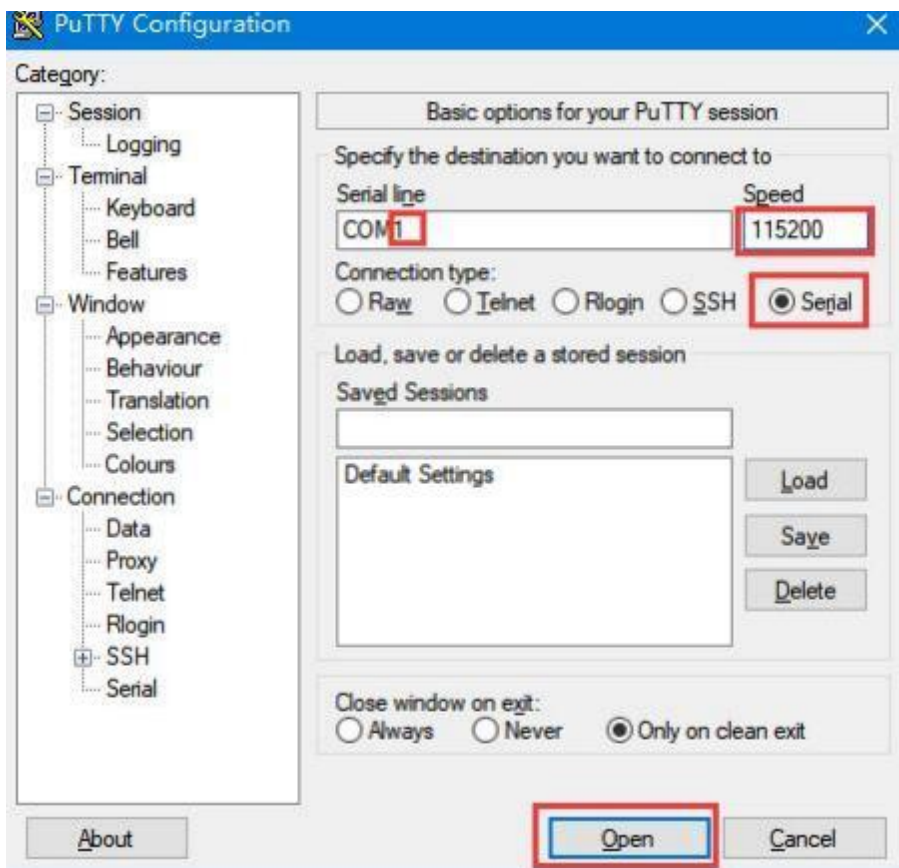
3, Just began to normal to send, but send failure after a period of time, may no balance or be blocked by operator or limit, Check the SIM card again or contact SIM Operator.

## 6, Change IMEI/Send USSD/Call/Put in PIN/PUK

### code(AT command)



[Download putty](#), and open it ,put in COM number ,open it ,



According to the following text instructions.

### Change IMEI

([Operation demonstration video](#))

- 1, open Putty
- 2, click " Serial"
- 3, Input the com port in "Serial line" such as COM 3
- 4, PUT IN "at&f"
- 5, put in "at+cgsn"//check IMEI

- 6, `at+egmr=1,7,"IMEI number"` change imei, for example :  
`AT+EGMR=1,7,"453243242432134"`  
if you put in imei is wrong ,it will reset or keep old IMEI
- 7, put in `"at+cgsn"//check new IMEI`

## **CALL**

- 1,open Putty
  - 2,click " Serial"
  3. Input the com port in "Serial line" such as COM 1
  - 4,PUT IN `"at&f"`
  - 5,put in `"ate1"`
  - 6,put in `"atd number;"`
- for example:
- `atd 0976006161;`
- 7,put in`"ATH"` hung off call

## **Send USSD**

- 1,open Putty
- 2,click "Serial"
3. Input the com port in "Serial line" such as COM 1
- 4,PUT IN `"at&f"`
- 5,put in `"at+cusd=1,"USSD command"`

for example:

```
at+cusd=1,"*097#"
```

## Put in PIN/PUK code

1,open Putty

2,click " Serial"

3. Input the com port in "Serial line" such as COM 1

4,PUT IN "at&f"

5,PUT in "at+cpin?" //check PIN status

If display "ready"=> it is ok, don't need put in PIN code If

display "SIM PIN" =>need put in PIN code

PUT IN "at+cpin=PIN code", for example:

```
at+cpin=1234
```

If display "SIM PUK" =>need put in PUK code

PUT IN "at+cpin="PUK code", "NEW PIN code" ", for example:

```
at+cpin="12345678", "1234"
```