

YX

UART_TTL Modem install manual

YX Technical department

YX International Information Co., Ltd

Email: noc@yxinternet.com

Store: <https://yxinternet.com>

Directory

1, UART_TTL HUB contact PC	3
2, Install driver	4
1,Open the “Device Manager”	4
2,Install driver	6
3, Install SMS Caster E-Marketer software	9
4, The use of SMSCaster E-Marketer	15
1,Use the information	15
2,Send SMS	17
3,Other features(Automatically add prefix, intermittent sent, Multitasking is sent, Timing task)	19
4,Import contacts list	23
5,Add Groups	28
6,FAQ	31
7,Change IMEI/Send USSD/Call/Put in PIN/PUK code(AT command)	32

1, UART_TTL HUB contact PC (用 USB 线连接到电脑)

1, Device USB port contact to PC USB port, For the first time, put CD into the computer, or [Download the driver](#)

用 USB 线连接到电脑的 USB 口, 如果是第一次使用, 点击[下载驱动](#)

2, Open HUB power, Note: Must use the matching power adapter (**DC 5V**), otherwise it may cause damage to the equipment.

连接并打开电源。备注: 必须使用 **DC5V** 的电源, 否则会损坏设备



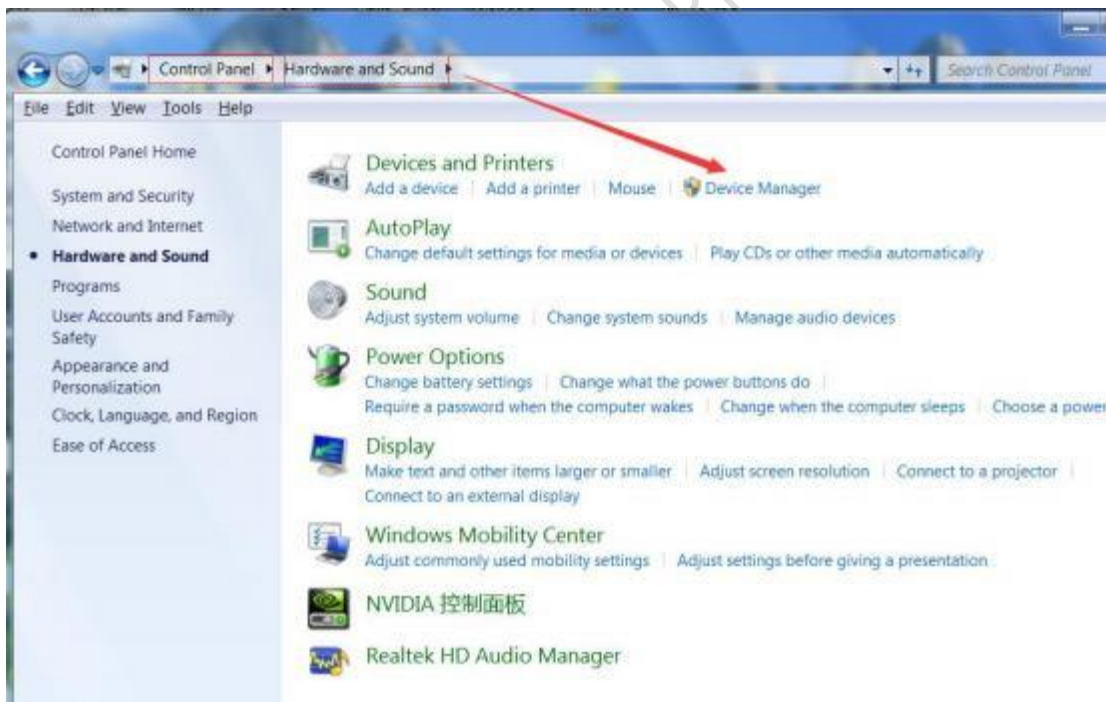
The switch of the USB 4 G Dongle to "Uart"; 2G GSM Dongle does not have this switch

把4G无线 Dongle 侧面的开关拨动到 "Uart" 的位置; 2G Dongle 无此开关





2, Install driver (安装驱动)

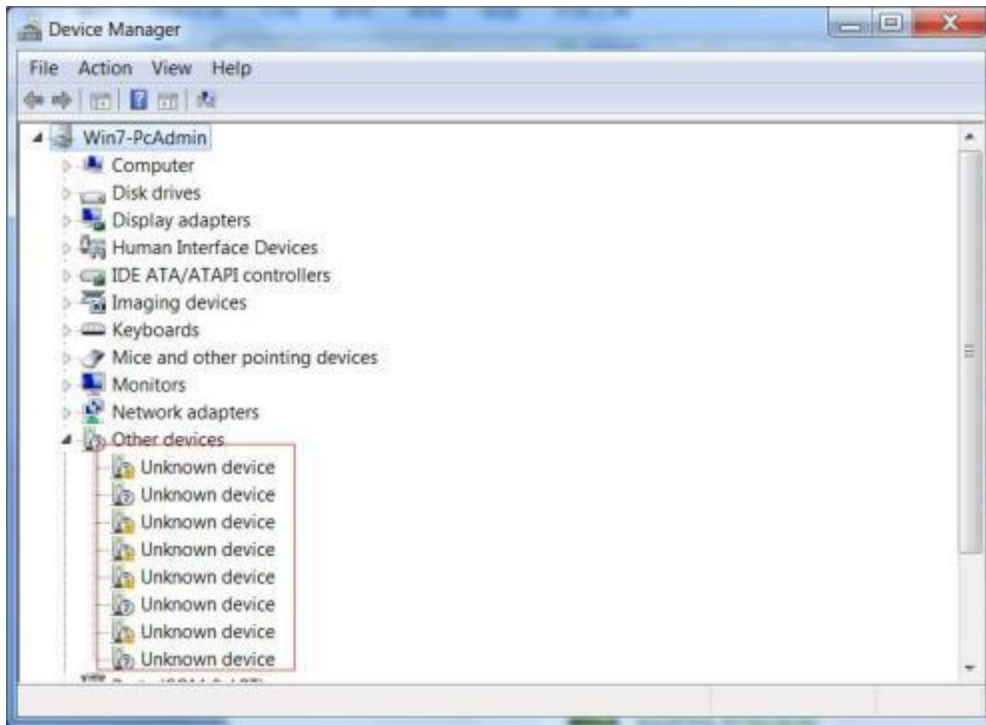


1, Open the “Device Manager” (devmgmt.msc)

打开电脑上的“设备管理器”

If **versions below Windows 7**, you can see: this is UART_TTL HUB, there is no driver

如果你的操作系统是 **windows7** 以下的，你将会看到一些带黄色感叹号的“未知设备”



If **Windows 10 and above**, there is default driver displayed as COMXX, which is not complete driver and needs to be updated

如果你的操作系统是 **windows10** 及以上的，系统有自带驱动程序，会显示 COMXX，但这不是合适的驱动，需要更新



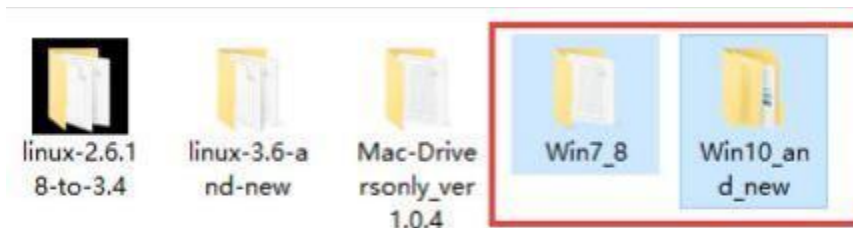
2, Install driver ([Download the driver](#))



XR21V_Dri

1, Unzip this file `vers.zip`, If there is no decompression procedure, please [Download WinRAR](#), and install it

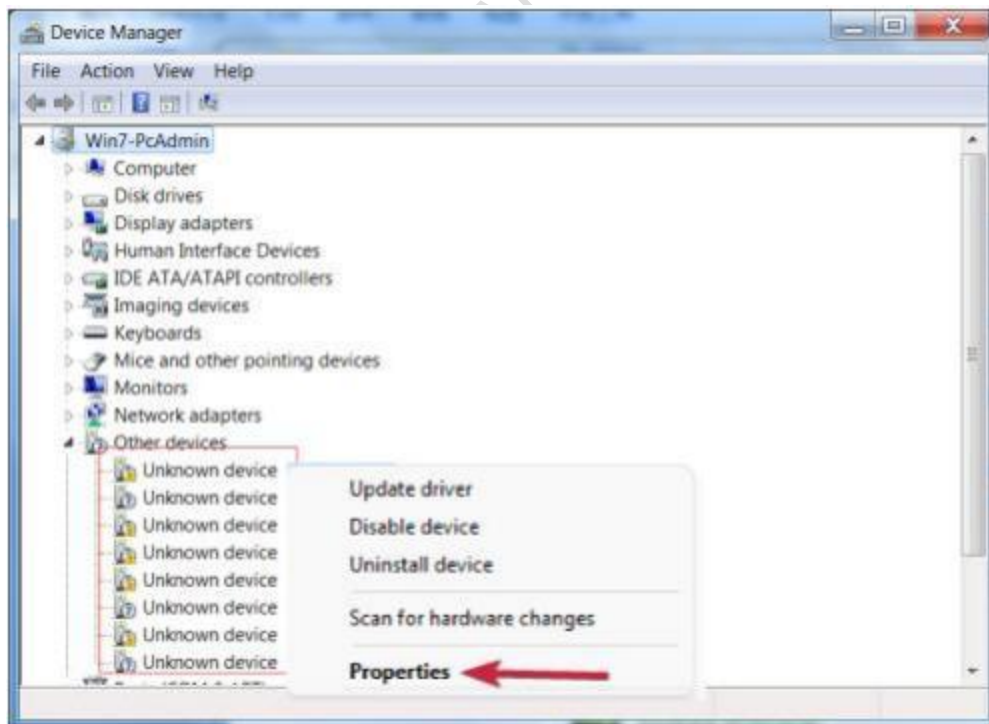
解压刚刚下载的那个驱动文件，如果你的电脑没有安装解压缩的程序，请[点击下载](#)，并安装，然后再解压缩驱动文件包



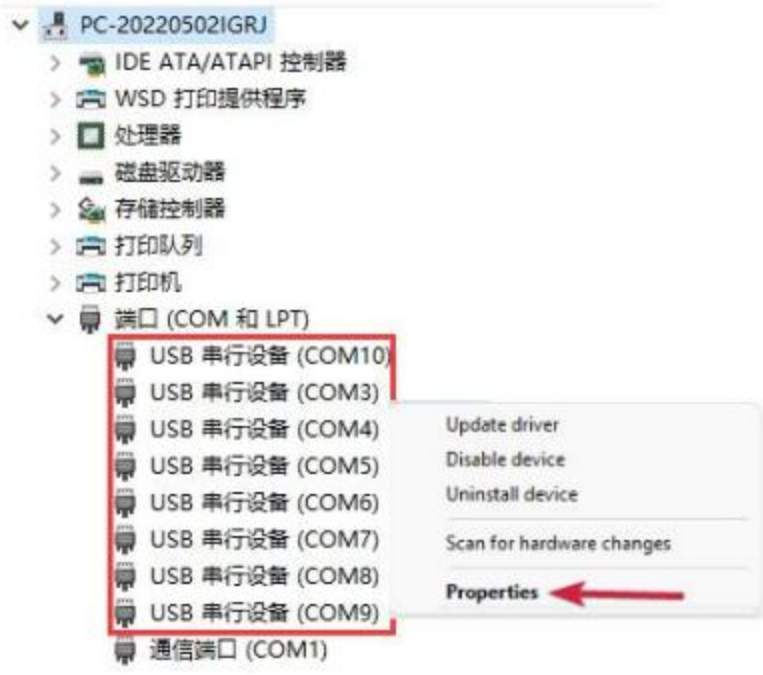
2, Install or update drivers: (安装或者更新驱动)

Right click on “Unknown device” or “COMXX” and follow the steps below

右键点击“未知设备”或者“COMXX”，然后参考下面的步骤操作



or



How do you want to search for drivers?

→ Search automatically for drivers

Windows will search your computer for the best available driver and install it on your device.

→ Browse my computer for drivers

Locate and install a driver manually.

Browse for drivers on your computer

Search for drivers in this location:

p\usrbser_2600_signed_win7\V2.6.0.0 Drivers\x64

Browse...

Include subfolders

Choose x32 or x64 based on your system

→ Let me pick from a list of available drivers on my computer

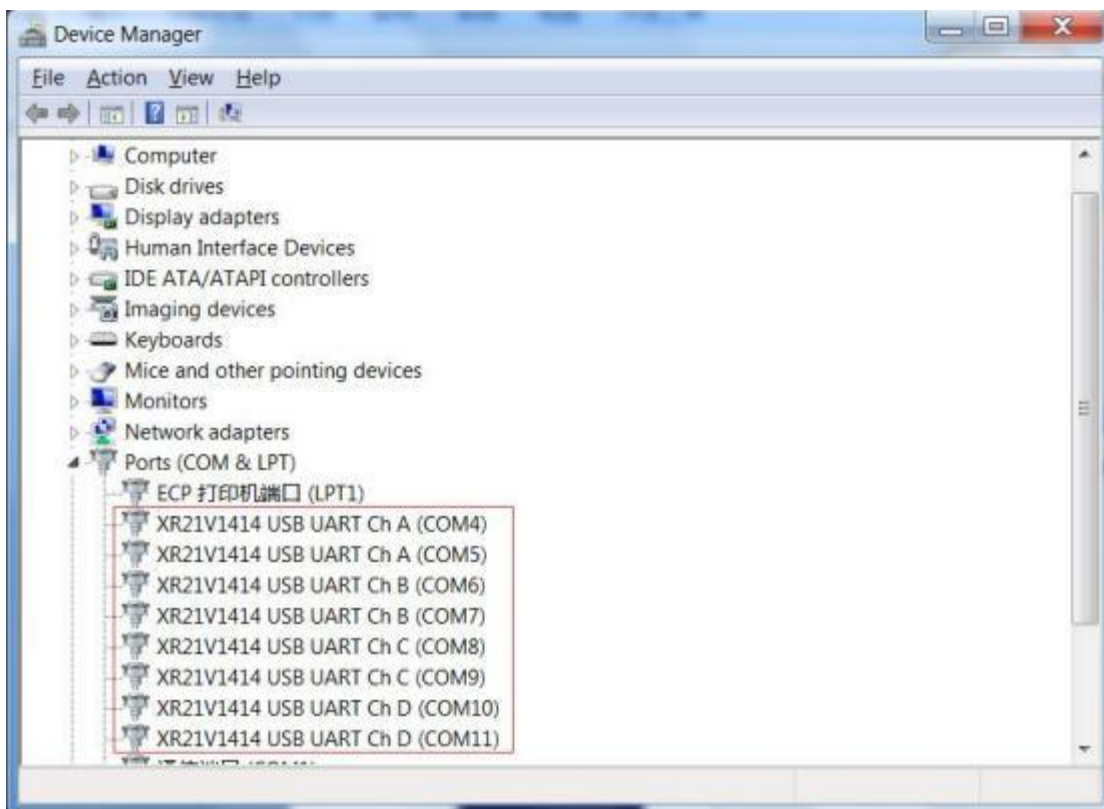
This list will show available drivers compatible with the device, and all drivers in the same category as the device.

Next

Cancel

3 After the driver installation or update is completed, "XR21V1414.....(COMXX)" will be displayed.

驱动安装或者更新完成之后，会显示 XR21V1414.....(COMXX)



3, Install SMS Caster E-Marketer software

安装 SMS Caster 软件

1, [Download SMSCaster](#) 点击左边的链接下载软件

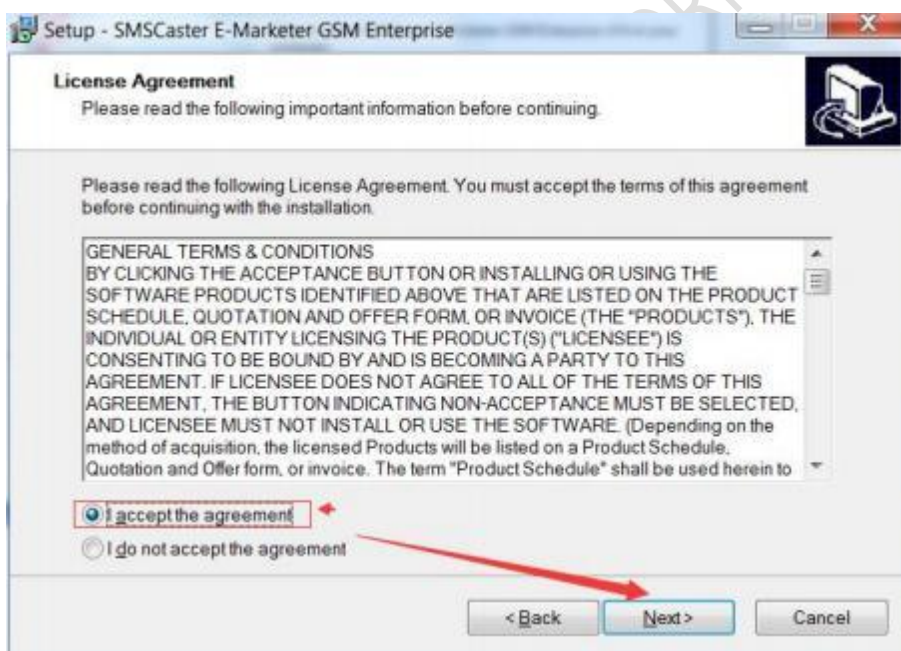


2, open it, click Next 双击下载好的文件，点击“Next”

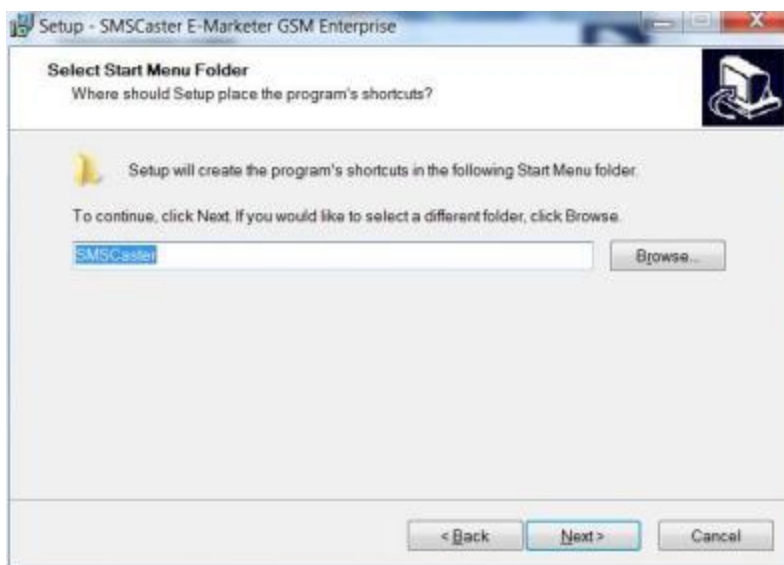
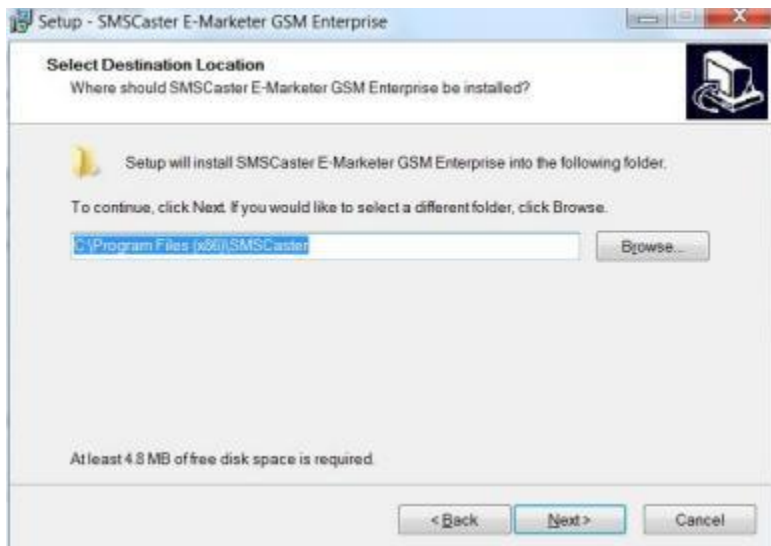


3 As shown in figure

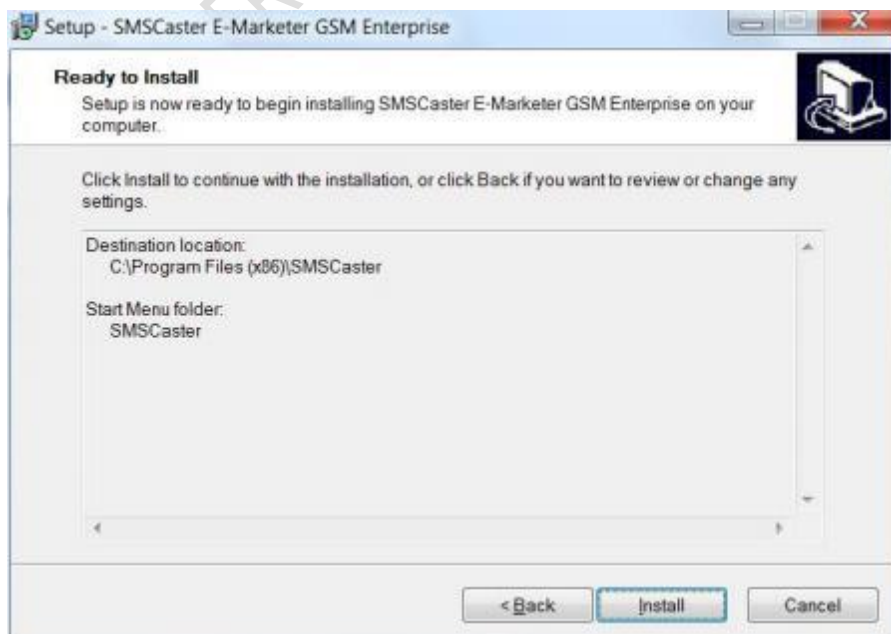
如下面的几个图片所示，按照步骤完成安装



4 Next, and continue Next 点击 Next，然后再点击 Next



5 click Install 点击 Install



6, Install done, click Finish 安装完毕, 点击 Finish



7, As shown in figure, just installed software shows Unregistered. So it need to be registered.

打开软件, 如下图所示, 显示未注册“Unregistered”, 首先需要完成注册才能更好的使用该软件





1, Click on the “Help-About” , Copy the content about “Serial#” to our engineers, we will generate a unlock key to you.

参照上图所示，点击“Help”然后点击“About”，复制下图所示的那个“Serial#”这栏的数据给我们，我们会给你生成一个密钥



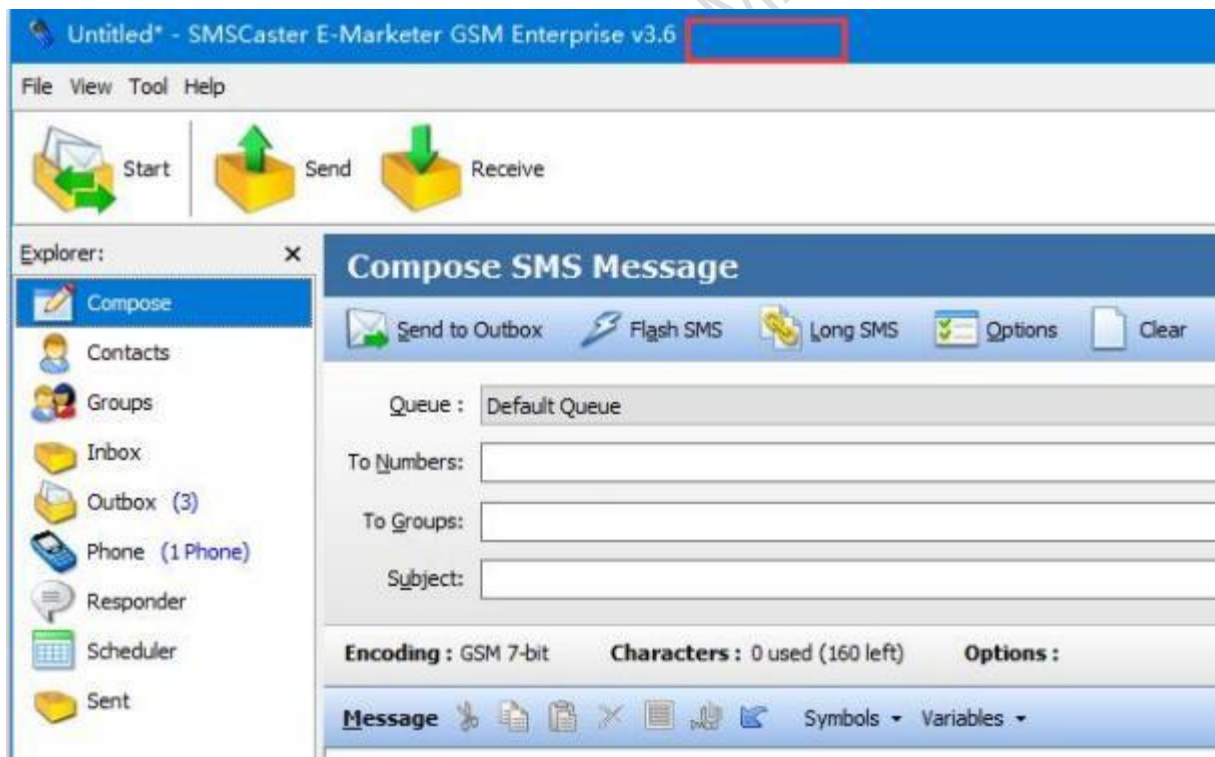
2, open it , Copy and paste we provide the unlock key, click “ok”

按照上图打开“Enter Unlock Key...” ，把我们提供给你的密钥粘贴到下图所示的“Unlock key”栏目中，点击“ok”



3,if the “Unregistered” is disappeared, it mean registered is success. If not, please do it again about registered steps.


如果 Unregistered 消失了，表示注册成功，如果还在，那就是操作有误，重新以上的操作



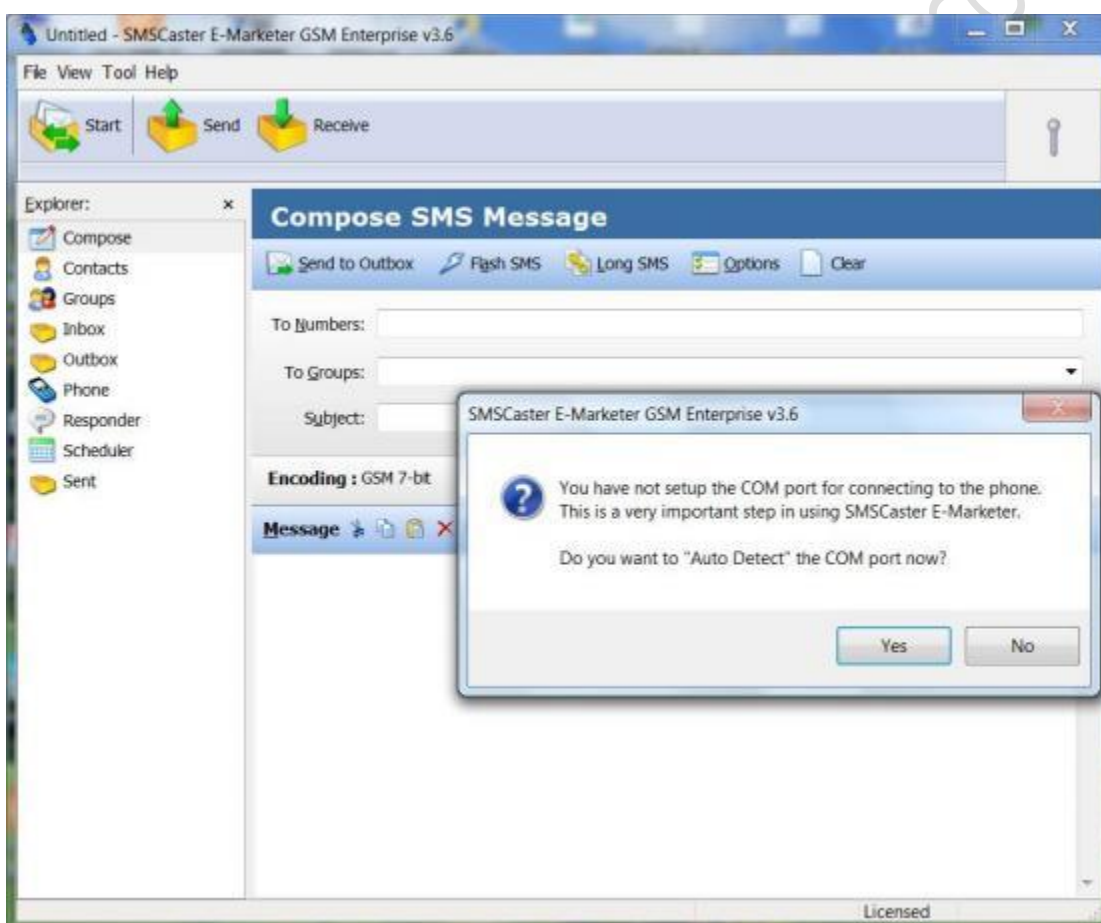
4, The use of SMSCaster E-Marketer 使用方法

1,Use the information



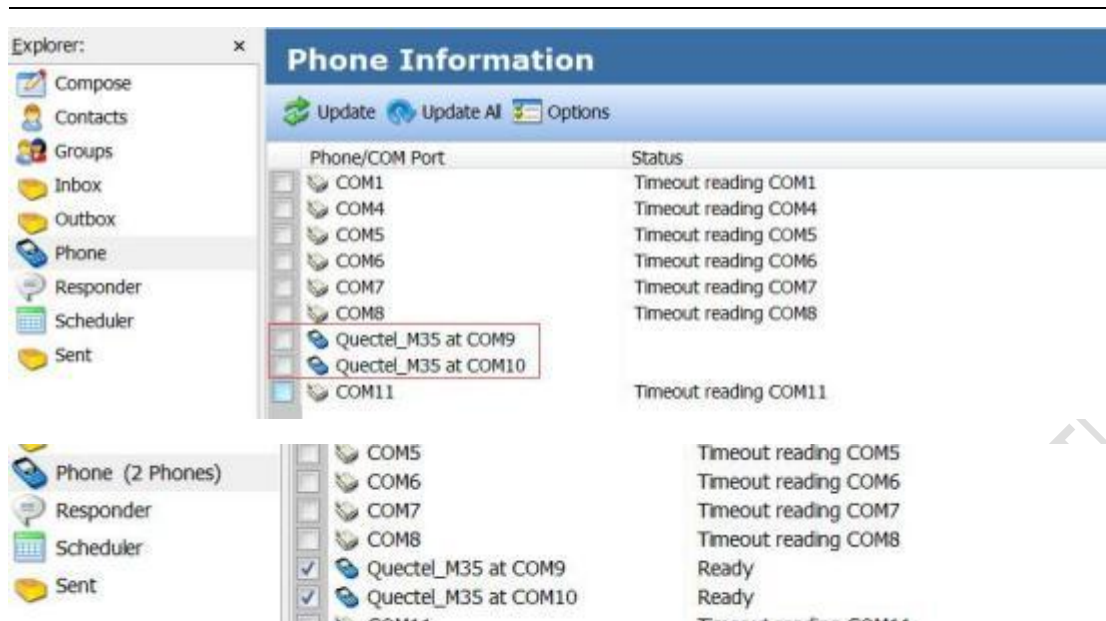
1,open  ,If you didn't choose any port in advance, It will promptly check COM list. Select “Yes”.

打开软件，如果您没有提前选择任何端口，它会检查 COM 列表。选择“Yes”。



2,it mean ,this COM port have SIM card, and it have read this SIM card ,if you select it ,The “Status” will “Ready” .

如下图所示的两个端口，表示已经安装好了 SIM 卡，如果你点击选中它们，在 “Status” 那列会显示 “Ready”



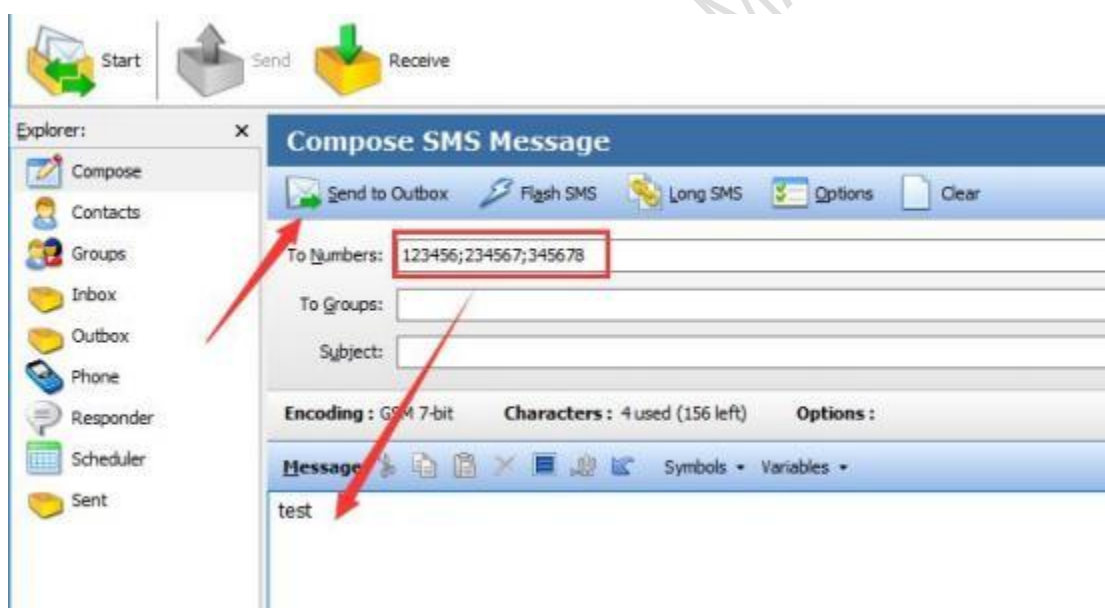
Select done ,it means , it will use them to send SMS. If you need to close the software, it is better do not select any com port , otherwise, you can't see the COM list when you open again, than you need to re-install the software again.

选择端口完成后，表示你可以使用刚刚选择的端口进行收发短信。如果你要关闭软件，建议不要选中任何端口，否则下次打开软件有可能会看不到端口而造成需要重新安装软件

2,Send SMS 发送短信

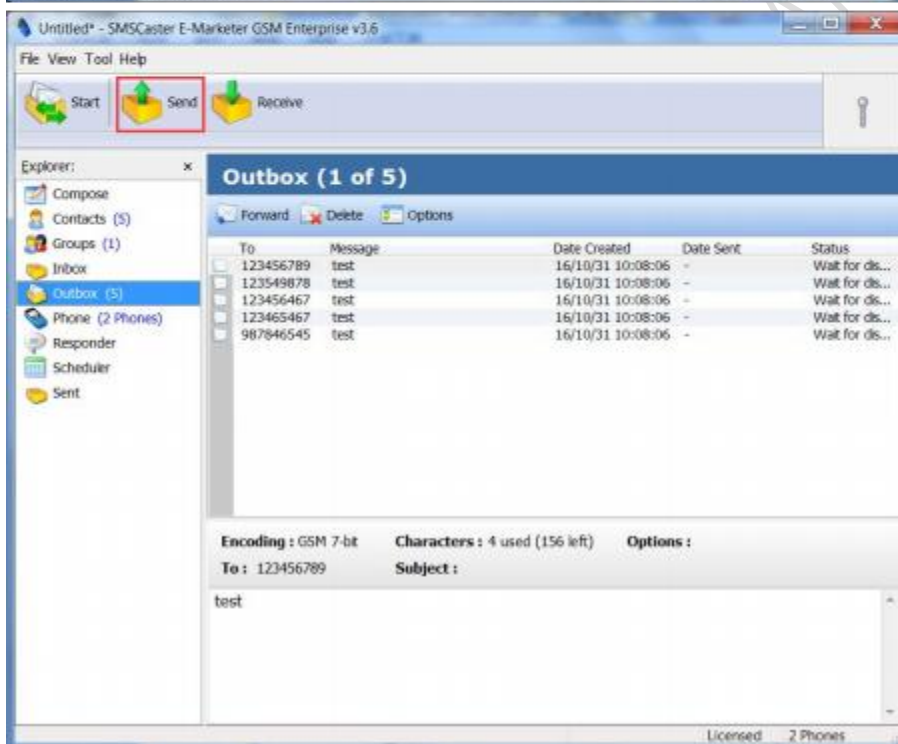
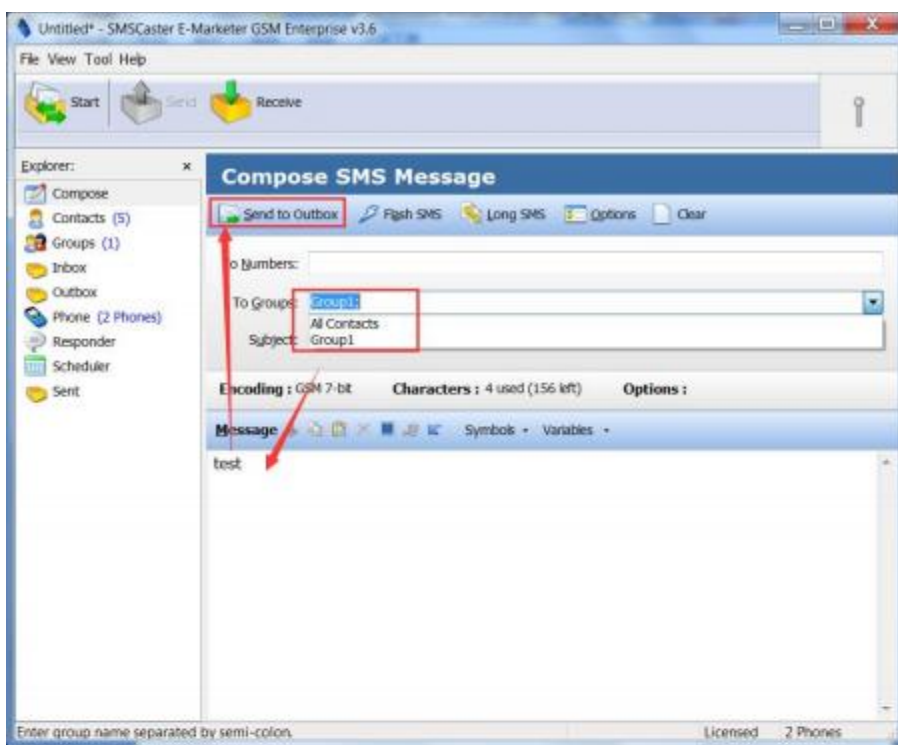
The simplest way to send SMS is to enter the number to in the "To Numbers" column. If there are multiple numbers, separate them with ";". Then, fill in the content column with the content you want to send, click "Send to Outbox", click to check "Outbox", and if there are no problems, you can click "Send" to start sending the SMS

最简单的发送方法，在“To Numbers”这栏输入你要发送短信的号码，如果多个号码，用英文字符分号“;”分隔，然后在内容栏填写你要发送的内容，点击“Send to Outbox”，点击检查一下“Outbox”，没有问题就可以点击“Send”开始发送短信



Select Groups or all (default all) => Input Message content => click “Send to Outbox” =>check Outbox (click “Send”). How to create an group, as explained later

如果使用电话本的群组发送 SMS，在“To Groups”栏选择你需要的群组，然后操作方法跟上面简单的方法相同。如何创建群组，请看后面说明



Send SMS, if successful, the message will be saved in “Sent”, the failed message will keep in “Outbox”

如果短信发送成功，会保存到“Sent”，发送失败的将依然保留在“Outbox”

3, Other features (Automatically add prefix, intermittent sent, Multitasking is sent, Timing task)

其他功能（自动添加前缀、发送时间间隔、发送多任务、定时任务）



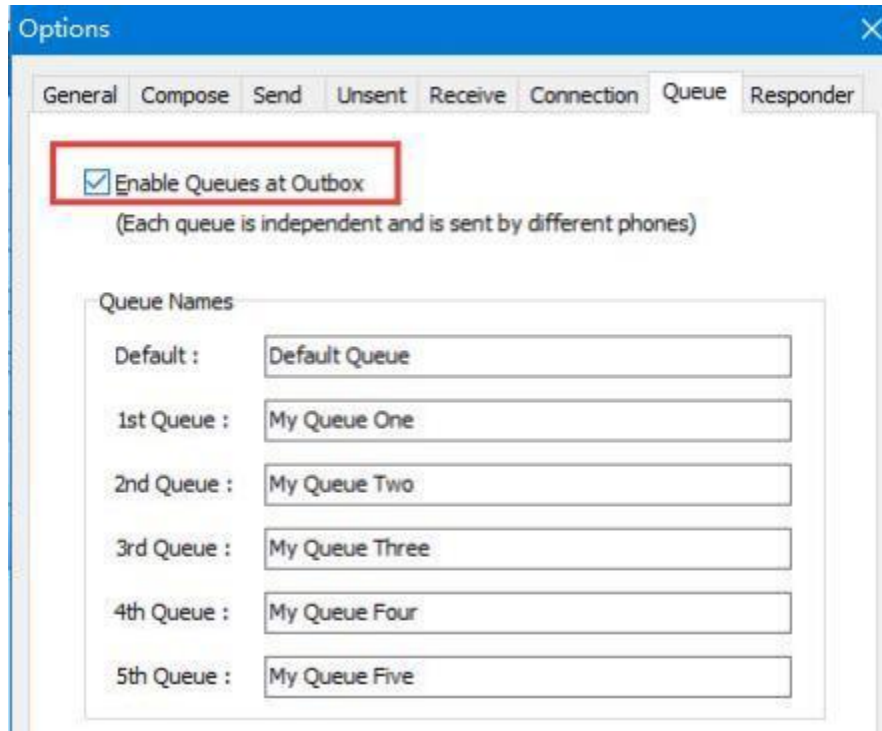
Automatically add prefix, intermittent sent, As shown in figure:

自动添加前缀（在号码前面是否添加0 或者 00 或者可以修改自动添加其他前缀），发送时间间隔（发送多少条短信就暂停多少秒），如下图所示



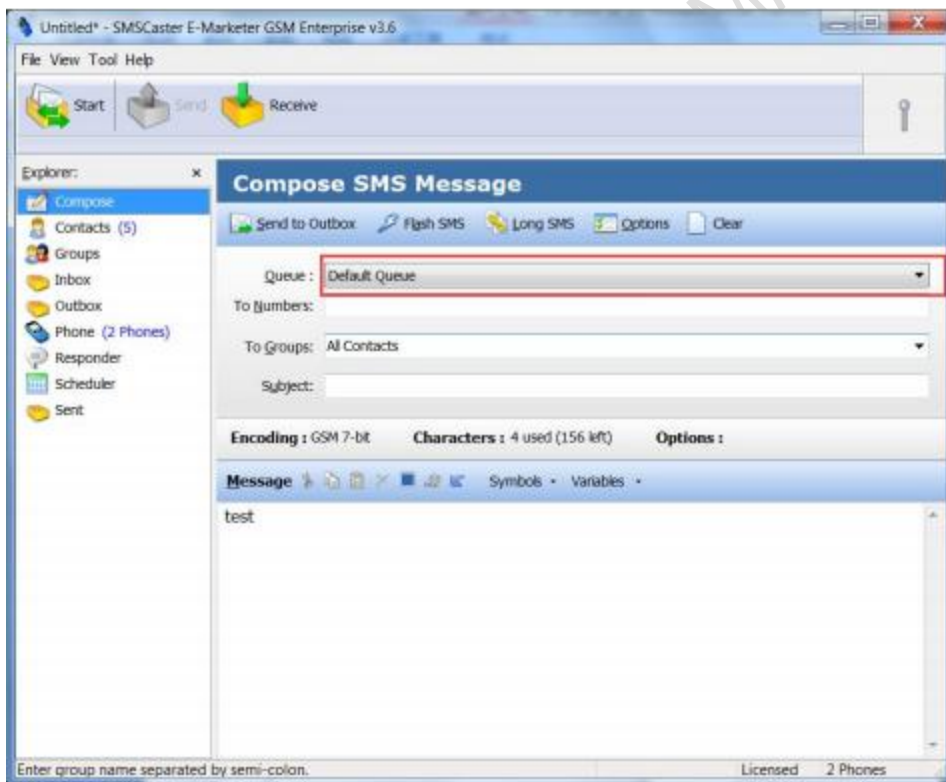
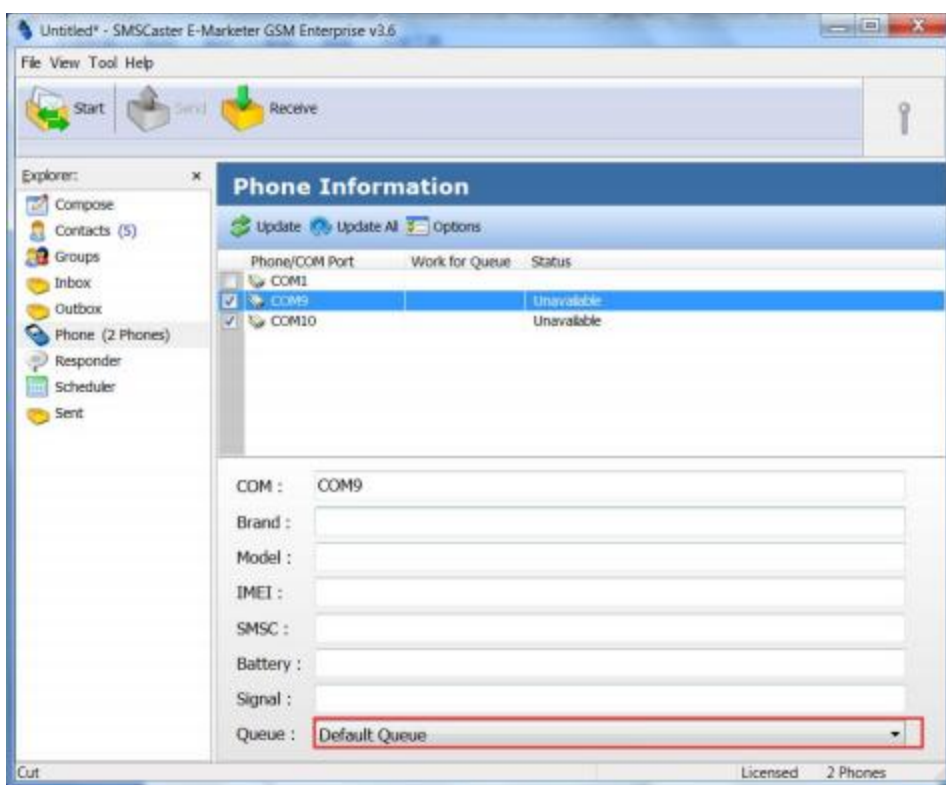
Multitasking is sent: Need open this function. Click “Enable Queues at Outbox”

发送多任务：需要打开此功能。选择 “Enable Queues at Outbox”



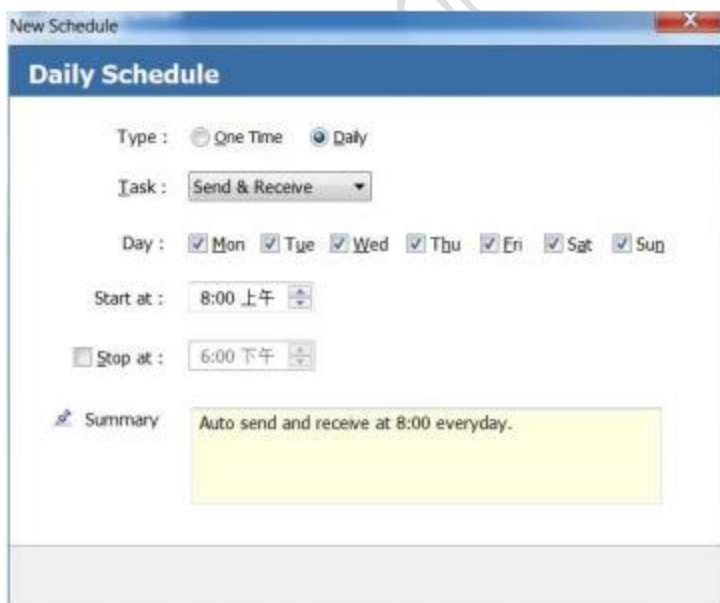
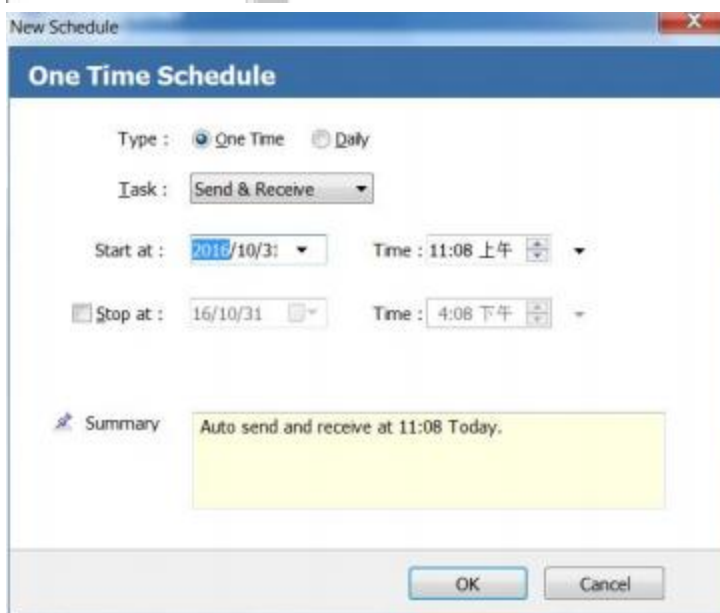
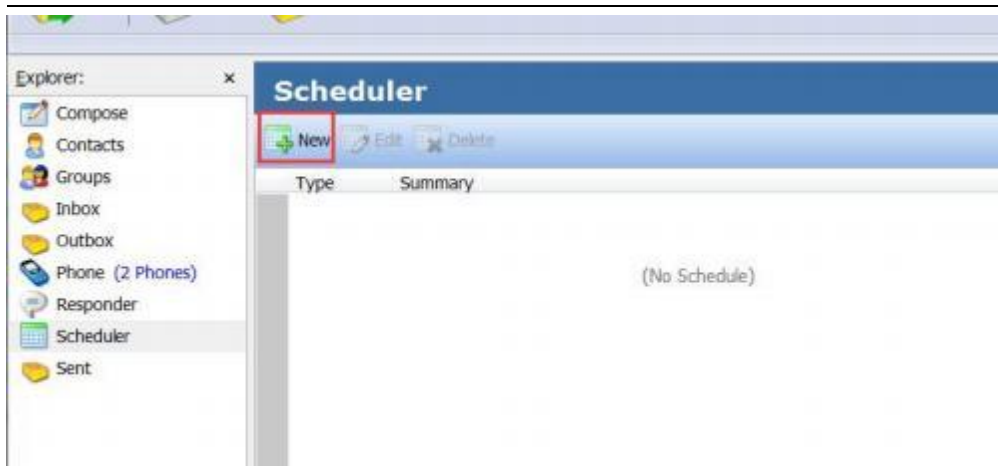
After open the multitasking function, you need to set COM in which Queue, and also need to select Queue when Add to the Outbox.

打开多任务处理功能后，您需要设置 COM 在哪个队列中，还需要在添加到发件箱 Outbox 时选择“Queue”。

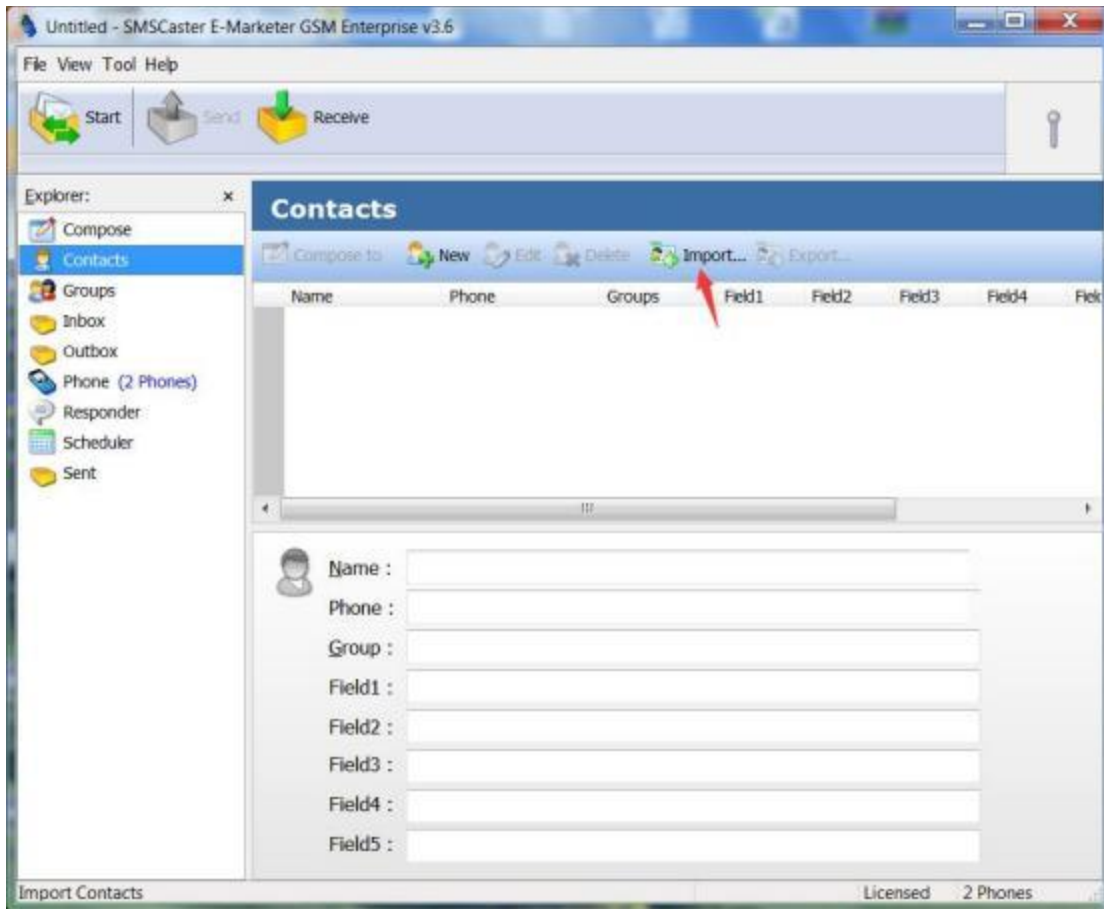


Timing task:(Please see prompt box)

定时任务（参考下面图示），设置是要发送/接收/发送和接收、单次/每周/每天，什么时候开始，什么时候结束等

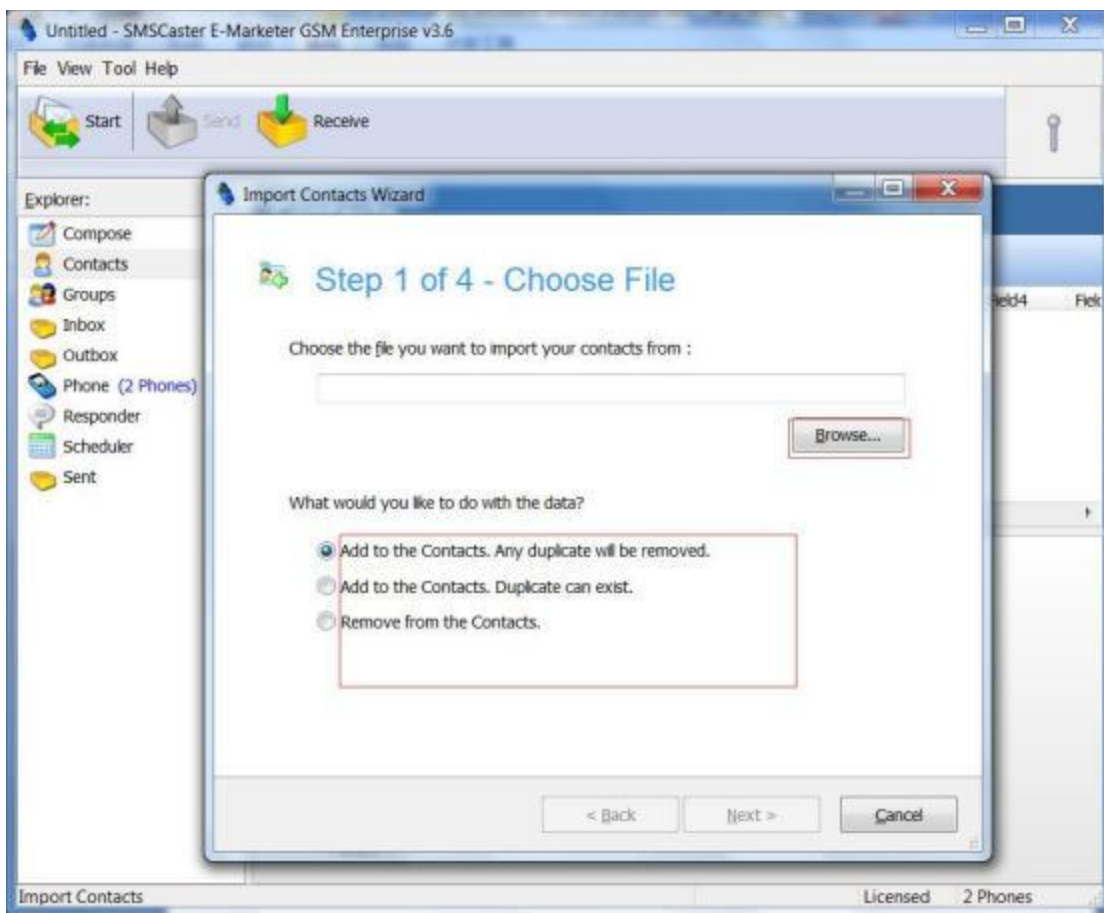


4, Import contacts list 导入联系人

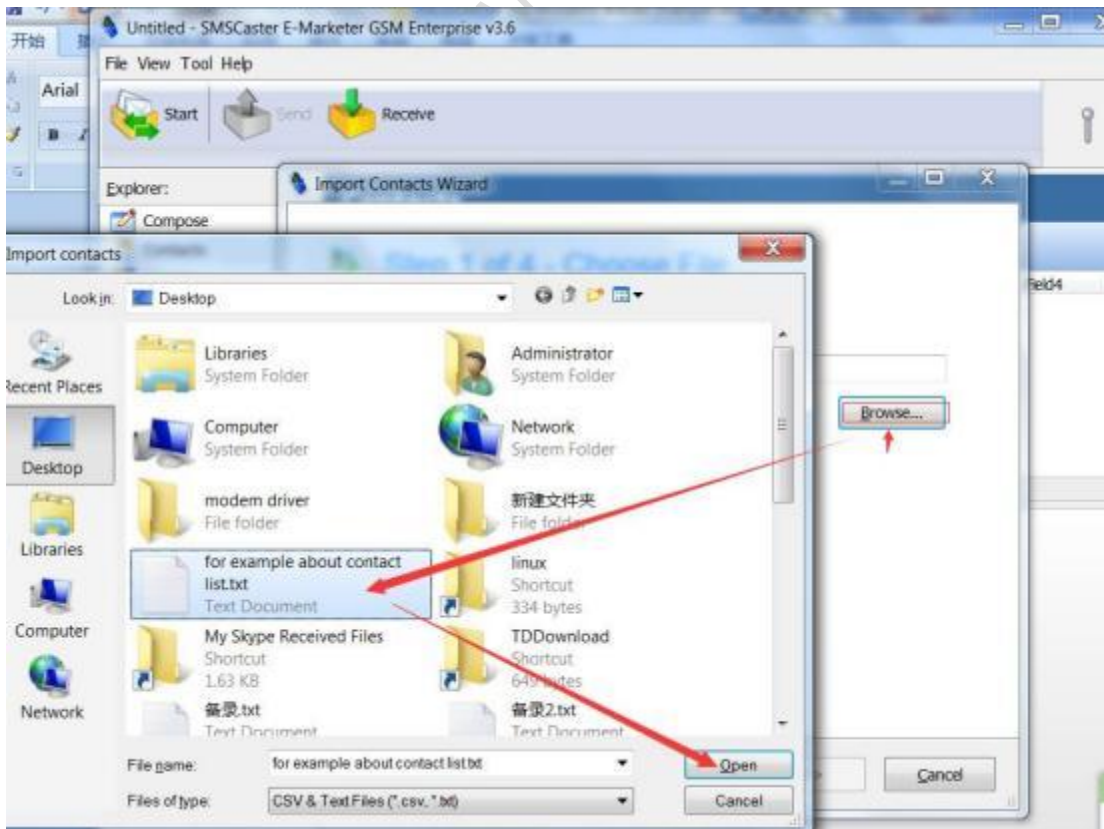


1, Please pay attention to choose the option below (Details please see the options, For example: The first is default, it means it will delete duplicate number When adding)

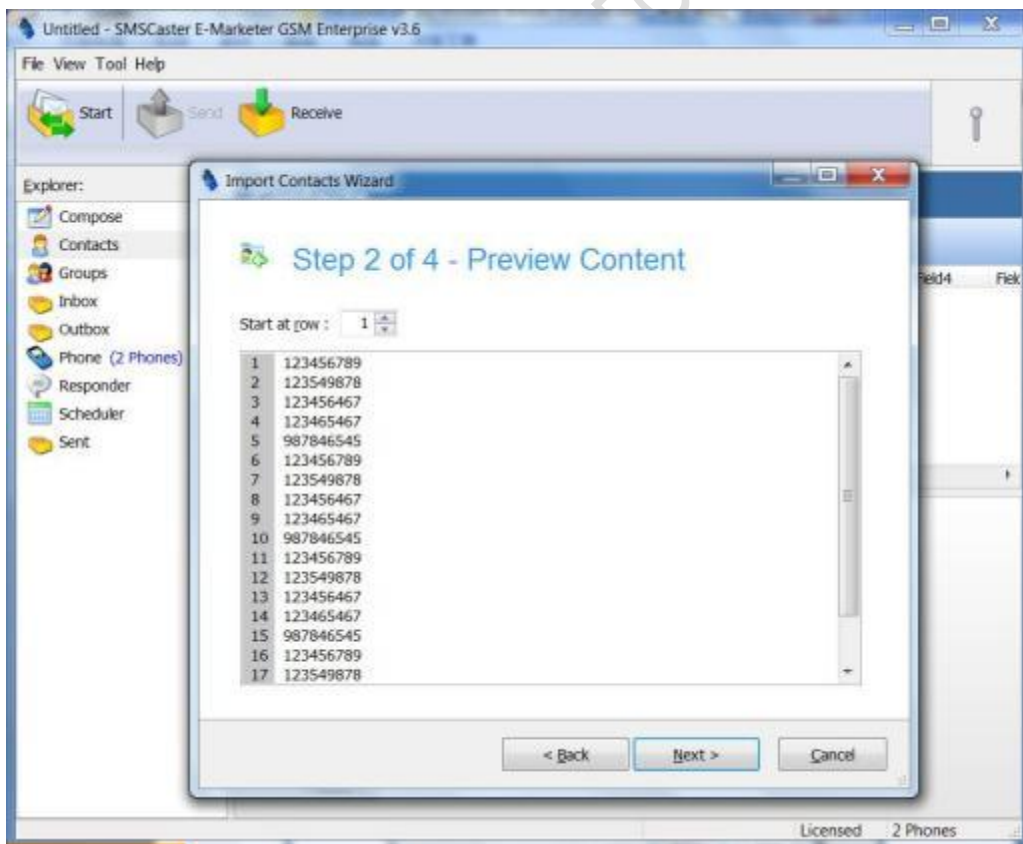
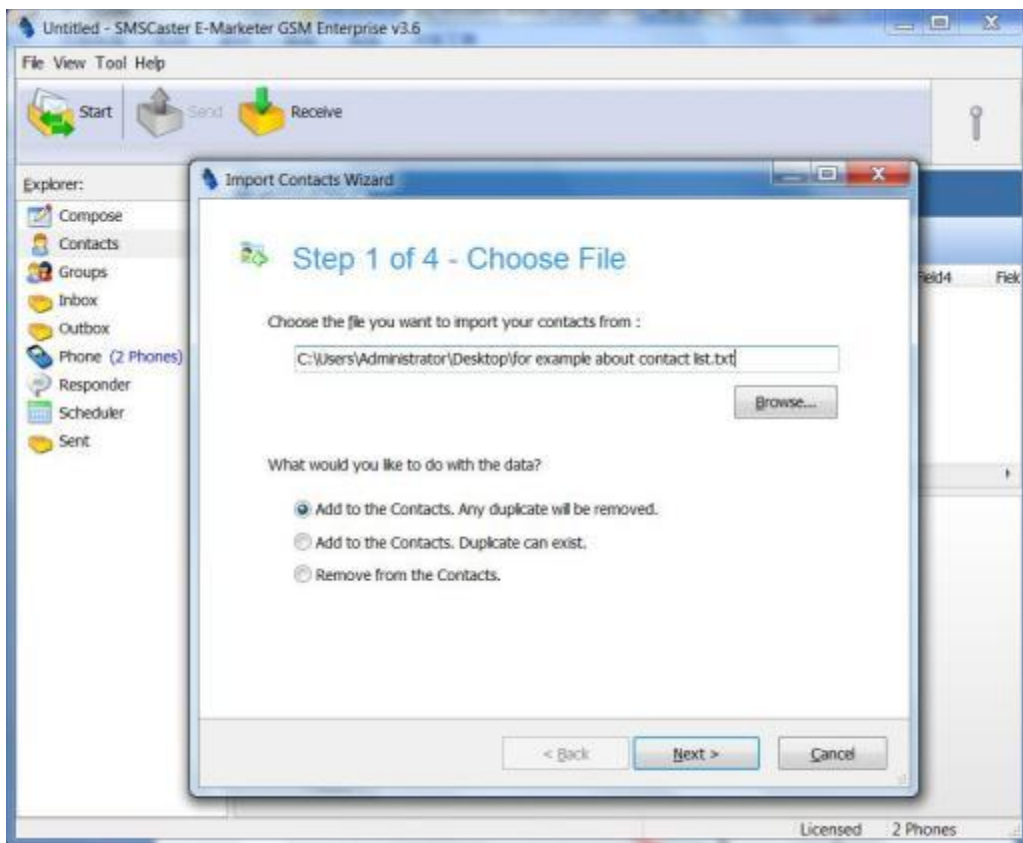
点击“Contacts”--“Import”，下面三个选项根据你的需要选择，第一个是遇到重复的只保留一条；第二个是不管是否重复，都添加；第三个是删除以前的联系人，直接导入新的



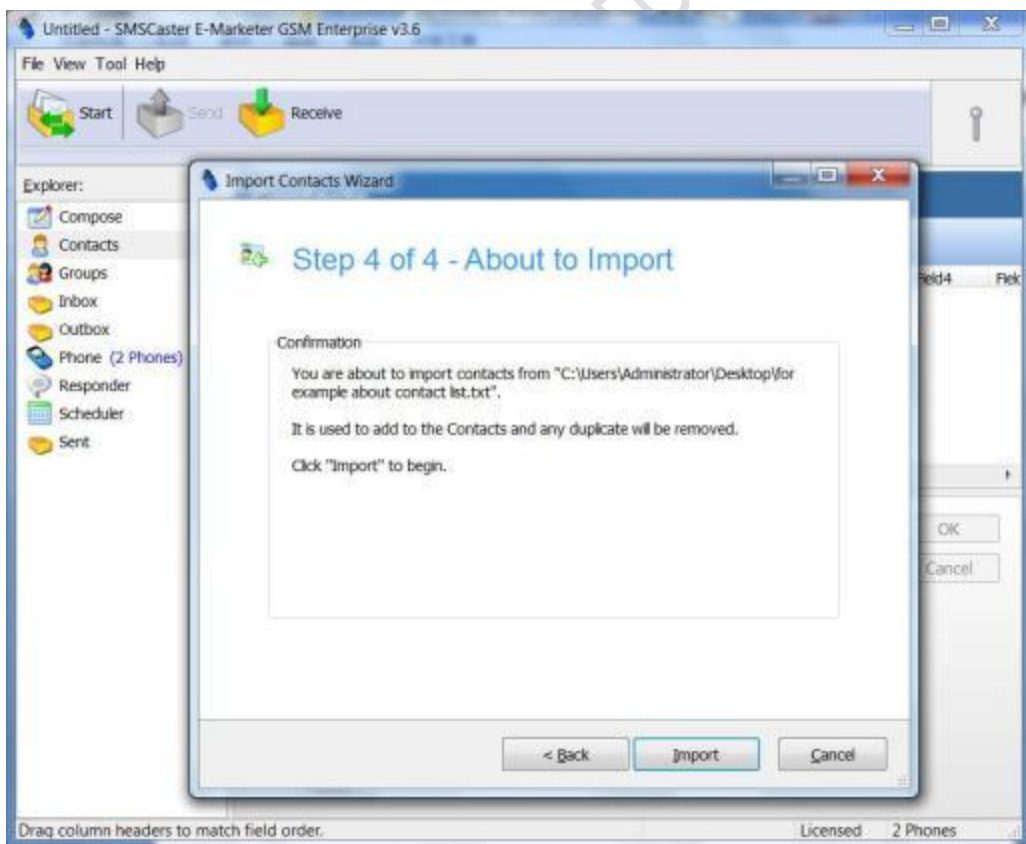
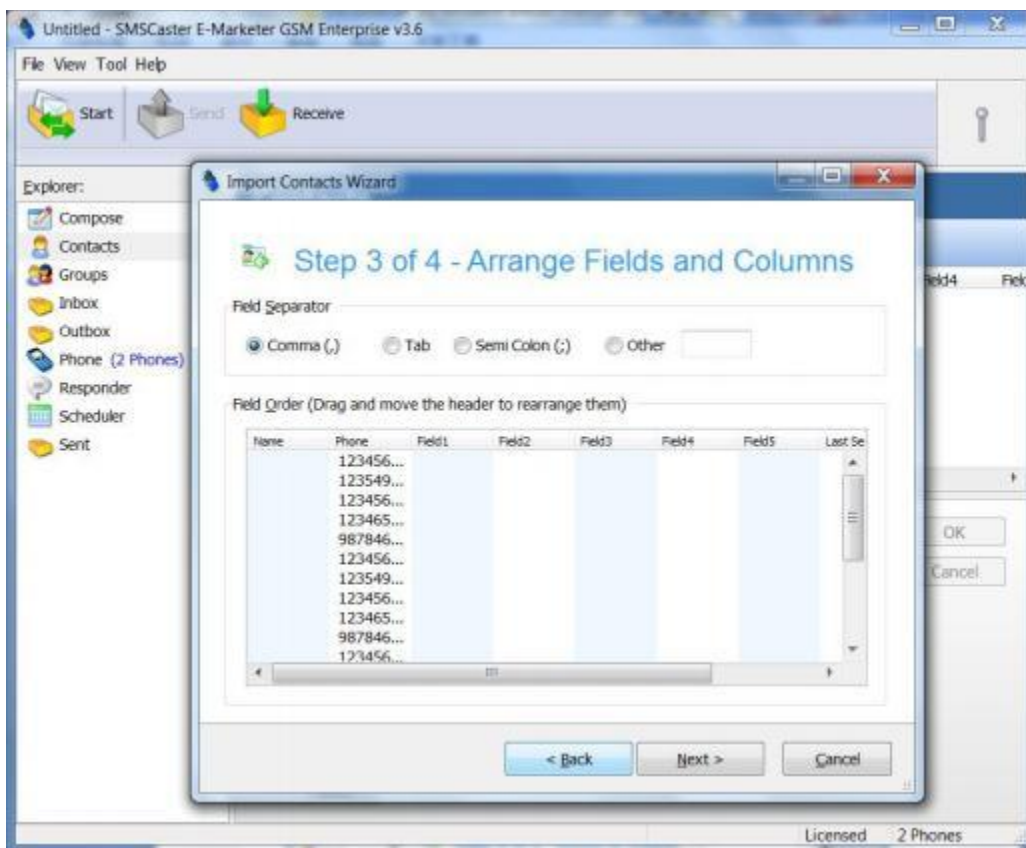
2, Select the file(csv or txt) 选择文件 (csv 或者 txt 格式)



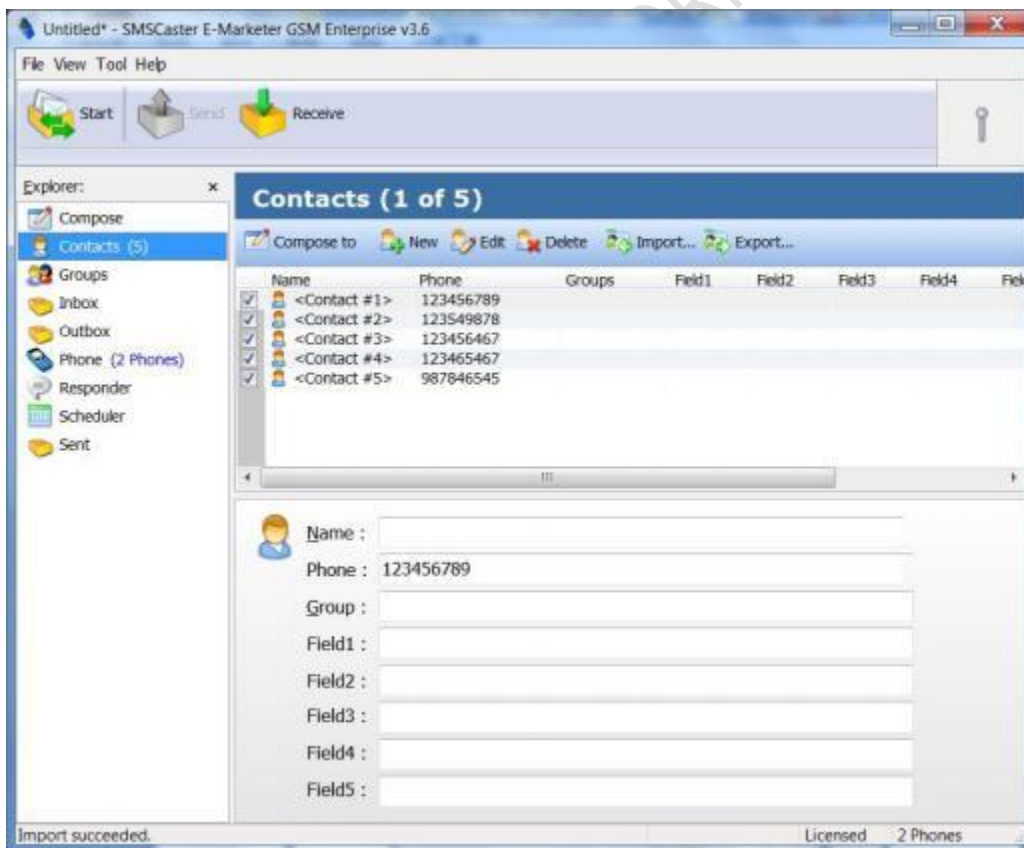
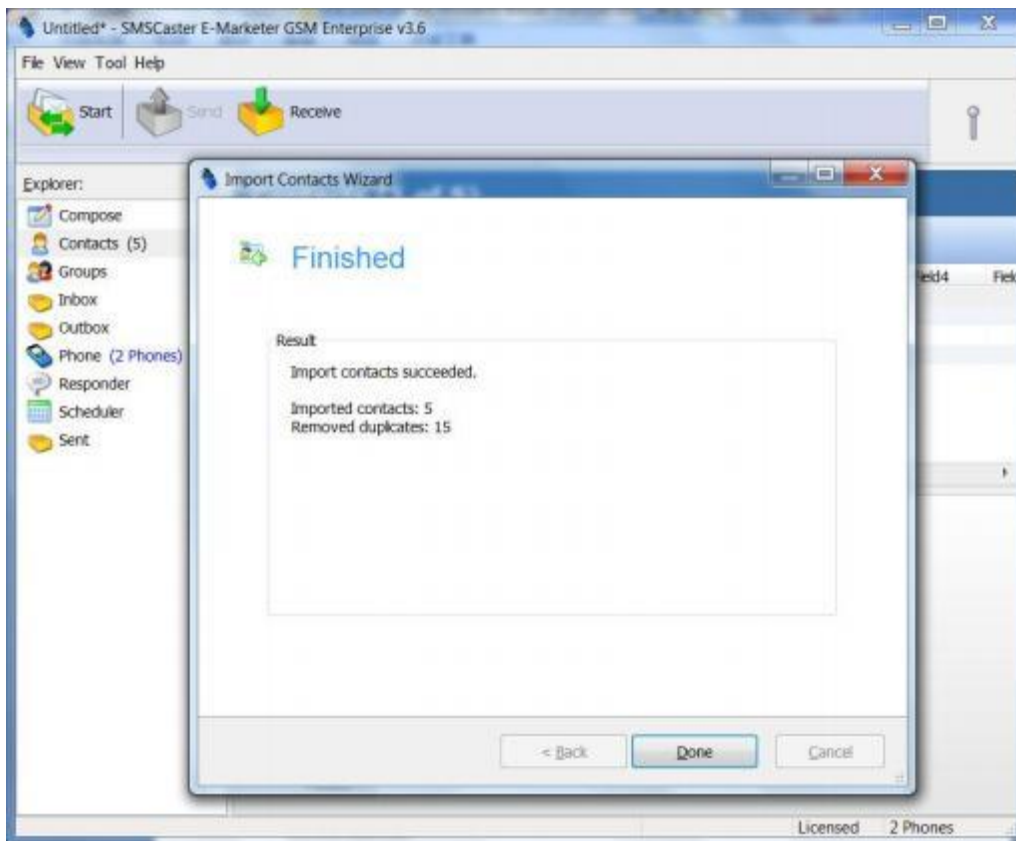
Click "Next" 选择好文件之后, 点击 "Next"



Please pay attention to the relevant options, the default click “Next”:
注意你文件的分隔是逗号还是分号或者其他的，选择之后点 “Next”



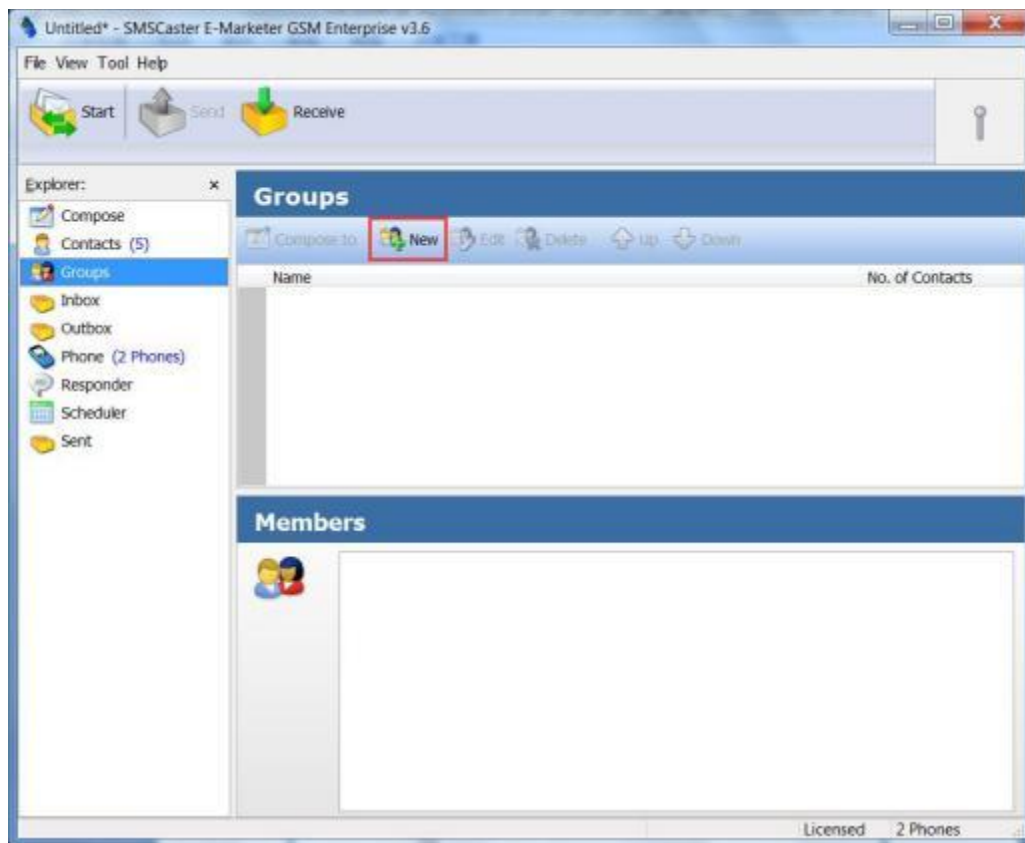
4, Import is done , See the prompt. 导入联系人完成



5,Add Groups 添加分组

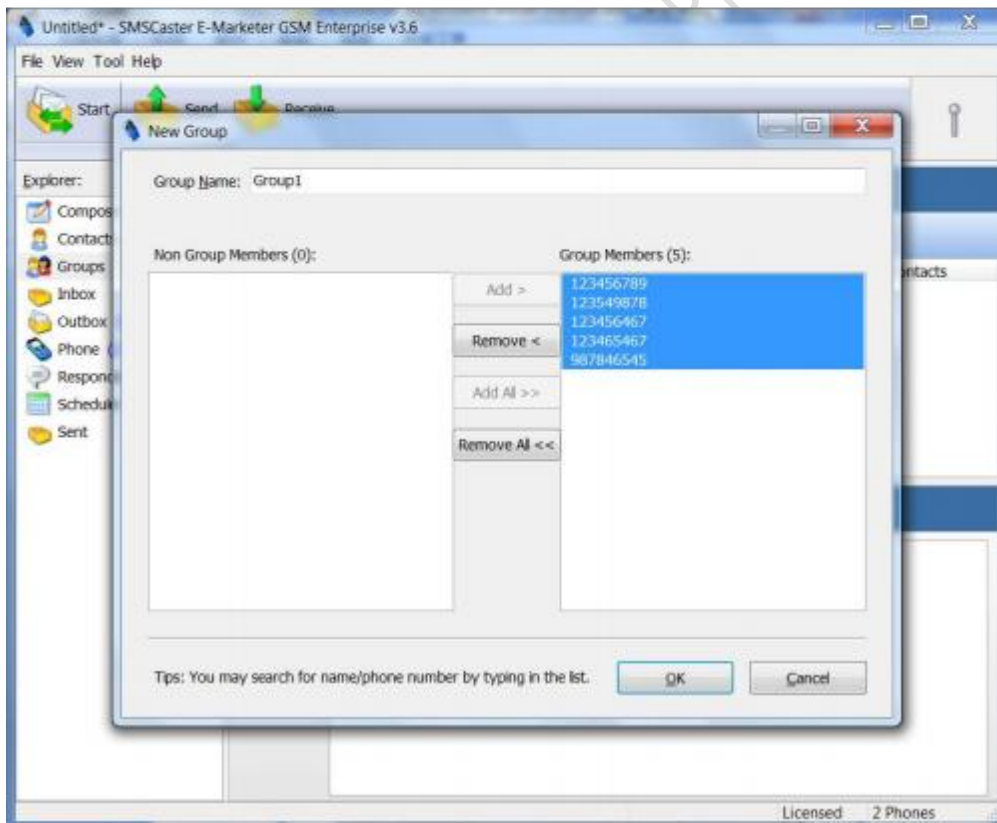
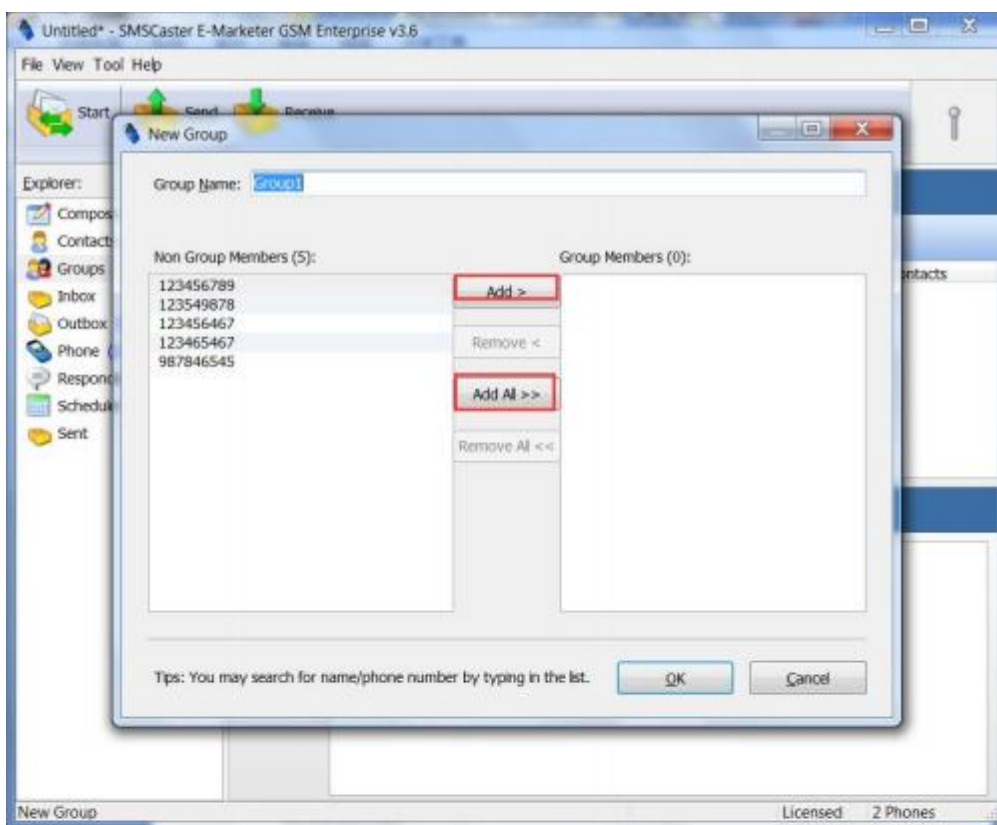
1,Click New

选中“Groups”之后点击“New”



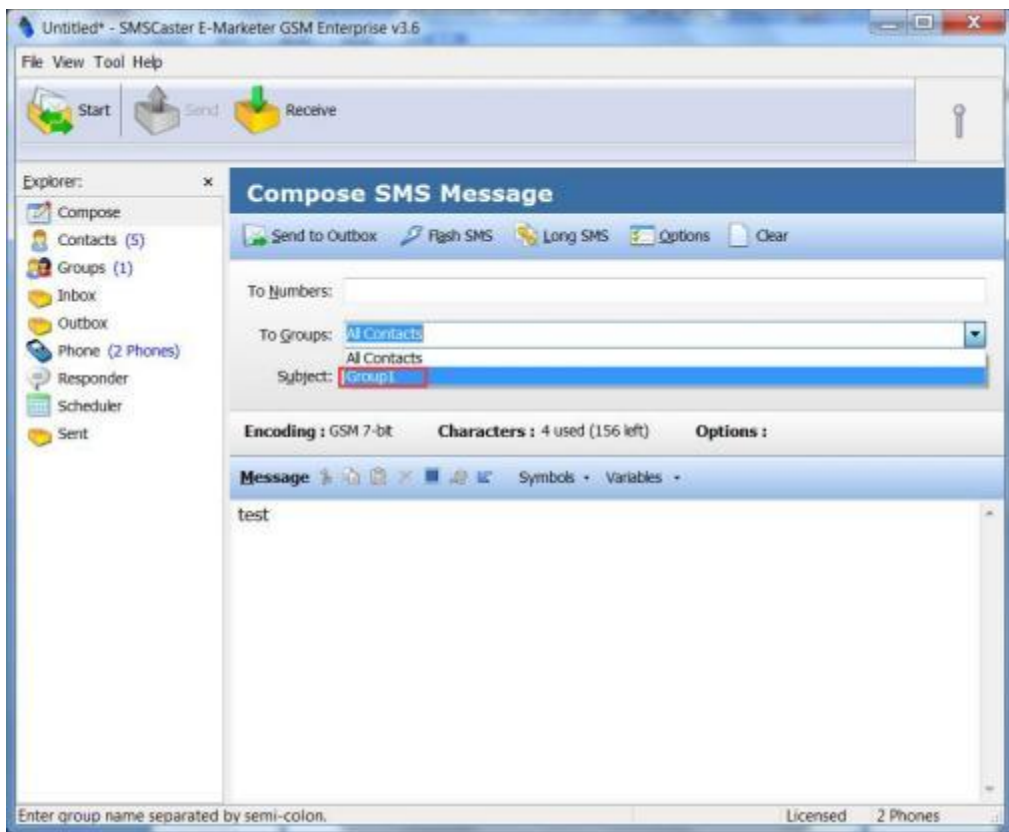
2,Input Group Name and select the need to add the number

输入组的名称，选择你要添加到改组的人名或者号码，然后操作添加选中的还是全部都添加进这个组



3, Group add done, please note it that to select the group when adding to outbox.

创建分组之后，起草发送短信的时候就可以选择该组了



6,FAQ

1, COM and port number is not corresponding, how do I know this port can not use?

Each module has lights:

1,Light flash every 3 s, means normal registration card, can be used;

2,Light flash every 1 s, it isn't normal registration card, Need to check the card is installed correctly or not.

2,You have installed SIM cards,but device can't read SIM card.

Please re-install SIM card and reboot it port, Installing sim card, the direction of the note card is correct

3,COM port have error 2

Please reboot this port or re-install this port(Each module is removable)

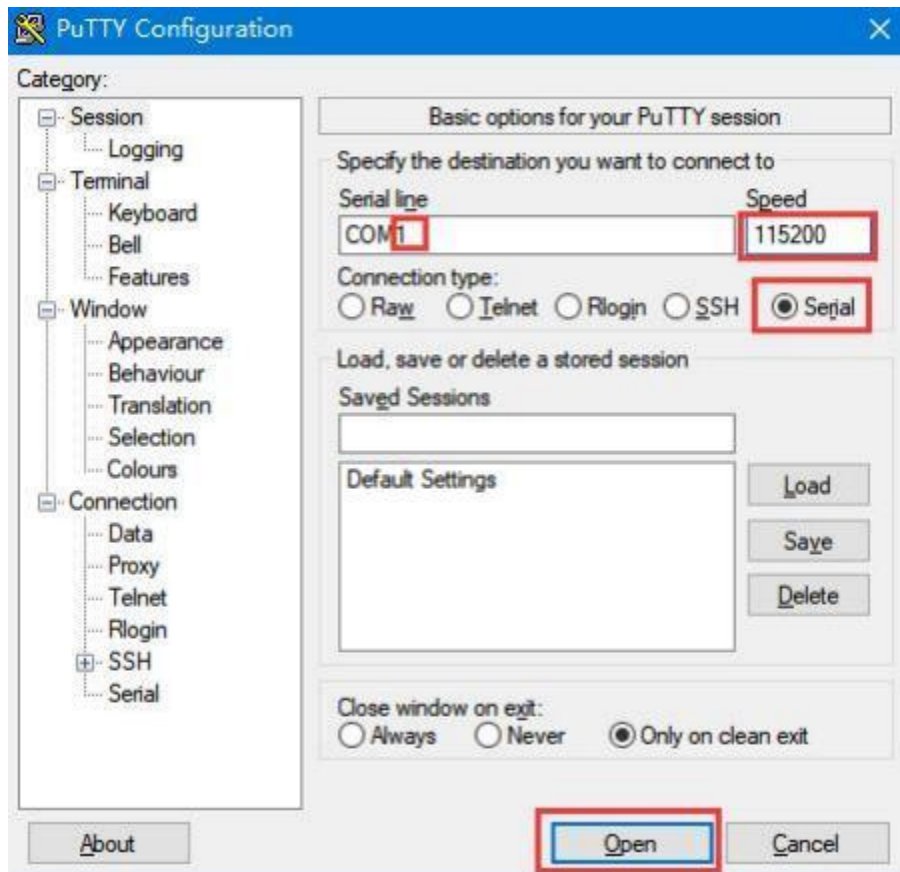
4, Just began to normal to send, but send failure after a period of time,

It may be blocked by operator or limit, Check the SIM card again or contact Operator.

7,Change IMEI/Send USSD/Call/Put in PIN/PUK code(AT command)



[Download putty](#), and open it ,put in COM number ,open it ,



According to the following text instructions.

Change IMEI

- 1,open Putty
- 2,click " Serial"
3. Input the com port in "Serial line" such as COM 1
- 4,PUT IN "at&f"
- 5,put in "at+cgsn"//check IMEI

6,at+egmr=1,7,"IMEI number" change imei,

for example :

AT+EGMR=1,7,"453243242432134"

if you put in imei is wrong ,it will reset or keep old IMEI

7,put in "at+cgsn"//check new IMEI

CALL

1,open Putty

2,click " Serial"

3. Input the com port in "Serial line" such as COM 1

4,PUT IN "at&f"

5,put in "ate1"

6,put in "atd number;"

for example:

atd 0976006161;

7,put in"ATH" hung off call

Send USSD

1,open Putty

2,click " Serial"

3. Input the com port in "Serial line" such as COM 1

4,PUT IN "at&f"

5,put in "at+cusd=1,"USSD command""

for example:

at+cusd=1,"*097#"

Put in PIN/PUK code

1,open Putty

2,click " Serial"

3. Input the com port in "Serial line" such as COM 1

4,PUT IN "at&f"

5,PUT in "at+cpin?" //check PIN status

If display "ready"=> it is ok, don't need put in PIN code

If display "SIM PIN" =>need put in PIN code

PUT IN "at+cpin=PIN code", for example:

at+cpin=1234

If display "SIM PUK" =>need put in PUK code

PUT IN "at+cpin="PUK code", "NEW PIN code" ", for example:

at+cpin=" 12345678", " 1234"

[\(IMEI change Operation demonstration video\)](#)